



WYNDHAM COLLEGE
NIRIMBA

WYNDHAM COLLEGE

Year 11 Assessment Handbook

2024

*A School as
unique as
you are!*

Table of Contents

COURSE GUIDE AND ASSESSMENT POLICY	3
A. Eligibility for the Award of an HSC	3
1. Study of an Appropriate Pattern of Study	3
2. Complete Courses Satisfactorily	3
B. Assessment Guidelines	4
1. General	4
2. Notification of Tasks	4
3. VET Mandatory Work Placement	4
4. Completion of Tasks	4
5. Appeals and Reviews	5
6. Malpractice	5
7. Non-Serious Attempt	6
8. "N" Determinations	6
9. Warnings	6
10. Record of School Achievement ROSA.....	6
C. Examinations	7
Procedures and Code of Conduct.....	7
Sample Warning Letter	9
Student Appeal Form Illness / Misadventure	11
Student Appeal Form	12
Procedures to Follow if Assessment Tasks are Missed	13
PRELIMINARY SUBJECT ASSESSMENT SCHEDULE	
Aboriginal Studies	15
Ancient History	16
Biology	17
Business Studies	18
Chemistry	19
Community and Family Studies	20
Dance	21
Design and Technology	22
Drama	23
Economics	24
Engineering Studies	25
English (Advanced)	26
English (Standard)	27
English an an Additional Language or Dialect	28
English Extension 1	29
English Studies	30
Exploring Early Childhood	31
Film, Video & Digital Imaging	32
Food Technology	33
Industrial Technology – Multimedia Technologies	34
Industrial Technology – Timber and Furnishings	35
Enterprise Computing	36
Investigating Science	37
Japanese Beginners	38
Legal Studies	39
Marine Studies	40
Mathematics Advanced	41

Mathematics Extension 1	42
Mathematics Standard	43
Modern History	44
Music 1	45
PD/Health/PE	46
Photography	47
Physics	48
Society and Culture	49
Software Design and Development	50
Sport, Lifestyle and Recreation	51
Textiles & Design	52
Visual Arts	53
Visual Design	54
Work Studies	55

VET SUBJECTS

Separate VET schedules are issued in class.

Year 11 Course Guide and Assessment Policy

NESA - The NSW Education Standards Authority is the statutory authority overseeing NSW schools, curriculum and assessment and is referred to as NESA.

A. Eligibility for the award of an HSC

1. Study of an Appropriate Pattern of Study

To qualify for the Higher School Certificate students must satisfactorily complete an HSC pattern of study comprising at least 12 units, following on from the Preliminary pattern of study. Both patterns must include:

- at least six units from NESA Developed courses;
- at least two units of a NESA Developed course in English;
- at least three courses of two units value or greater (either NESA Developed or NESA Endorsed courses);
- at least four subjects

To satisfy pattern of study requirements for the Higher School Certificate, a student may count a maximum of six Preliminary units and six HSC units from courses in Science.

2. Complete Courses Satisfactorily

A student will be considered to have satisfactorily completed a course if, in the principal's view, there is sufficient evidence the student has:

- (a) followed the course developed or endorsed by the NESA
- (b) applied themselves with diligence and sustained effort to the set tasks and experiences provided in the course by the school
- (c) achieved some or all of the course outcomes

It should be noted that, as a result of absence from a course, the principal may determine that course completion criteria may not be met.

Students whose attendance is called into question will be required to prove to the Principal's satisfaction, following a review of their performance, that they are meeting the course completion criteria.

B. Assessment Guidelines

1. General

Assessment tasks indicate achievement over a wide range of syllabus outcomes. Students will receive the following advice about assessment in each course before assessment begins.

- (a) the practical and written tasks, such as tests, assignments and projects, on which their assessments are to be based.
- (b) the weighting to be allocated to each task.
- (c) an indication as to when the task will be held.

2. Notification of Tasks

In addition to the schedule of assessment tasks, the college will provide adequate notice of the precise timing of assessment tasks. Generally, at least two weeks notice of the details of a task will be given and any change to the task that may occur.

NB If a student is absent from school or a lesson it is the student's responsibility to check if any information relating to Assessment Tasks has been communicated.

3. VET Mandatory Work Placement

As with all other Preliminary courses, students undertaking VET courses may be deemed to have either completed or not completed course requirements. It should be noted that if a student fails to undertake any mandatory work placement component it may be determined that the student has not made a genuine attempt to complete course requirements. In this case the Principal can indicate that the course has not been satisfactorily completed and the student may be issued with an "N" determination.

4. Completion of Tasks

NESA hopes that, through the process of continuing assessment, it will be able to reward sustained effort on the part of senior students and sample a wider (and, therefore, more accurate) range of student attainments. A sound performance in assessment tasks over the Preliminary course also helps to prepare students for the actual HSC which will modify their school assessment. It should be realised that the assessment program places a responsibility upon students to complete the assessment tasks.

At Wyndham College the following policies towards missed tasks have been determined.

- i. Students who **complete** all aspects of the assessment task and **submit it** on or **before** the due date are eligible for the full mark allocated for the task.
- ii. Students who **attend** an assessment task which is to be completed at school are eligible for the full mark allocated for the task.
- iii. Students who **fail to submit** an assessment task by the due date **must be given zero** if they have no valid reason.
- iv. Students who **fail to attend** on the specified date an assessment task which is to be completed at school **must be given zero** if they have no valid reason.
- v. Students who fail to submit an assessment task by the due date, but who have a valid reason (such as sickness or approved leave validated by appropriate documentation) are eligible for the full mark allocated to the task if they have completed the task. A medical certificate may not be accepted as excusing late submission of tasks **where the task was issued well in advance of the illness** and the medical certificate shows that the student was not incapacitated for a large part of that time. You should submit whatever progress work has been completed at that time e.g. drafts, plans, rough work etc. This will be assessed by the teacher and may be awarded marks.

PLEASE NOTE: YOU MUST SUBMIT THE TASK ON THE DAY YOU RETURN TO SCHOOL.

- vi. Students who **fail to attend** an assessment task which is to be completed at school, but who **have a valid and approved reason** (e.g. sickness with medical certificate and submitted Illness/Misadventure Appeal) must be given an opportunity to do the task or an equivalent task at a later date determined by the Head Teacher. In exceptional circumstances it may be necessary to give a mark based on the student's other assessment tasks. These students are eligible for the **full mark** allocated to the task.
- vii. Students who **submit an incomplete** task on or before the due date are to be allocated a mark. This mark is to be based on the proportion of the task completed. The task does **not** automatically receive a zero mark. As an example, if the task had six equally weighted components and a student attempted only three of these, that student would be eligible for up to 50% of the mark allocated to the task.
- viii. If a student believes factors beyond their control, e.g. sickness or family misfortune, have affected their ability to do their best on a task they may apply for an extension by seeing the appropriate Head Teacher at least 24 hours before the due date.

NO EXTENSION WILL BE GRANTED TO APPLICATIONS RECEIVED ON THE DAY A TASK IS DUE.

- ix. If a student submits a task which is deemed to be a non-serious attempt by the teacher, then a zero mark will be awarded.
- x. During examination sessions, any portable electronic devices, including iPods, are not permitted and only NESAs approved equipment, such as calculators, may be used.
- xi. Hard copies (not computer files) of written task responses are to be submitted unless the task stipulates otherwise. It is the student's responsibility to have work printed in time for submission.
- xii. Printing of major works can be organised through the school provided it is submitted one week before the due date.
- xiii. Computer / printer failure cannot be used as a reason to submit work late.

Where a student is going to be absent, the student or parent/guardian should contact the Head Teacher or class teacher if possible, before the task takes place. If unexpectedly absent on the day of the task, the student should phone the school and inform the Deputy Principal, or the Head Teacher of the subject. Work Placement is not a valid reason to submit work late. All students on Work Placement must make arrangements to submit the work by the due date.

5. Appeals and Reviews

Where students are dissatisfied with any aspect of the assessment procedure, they should in the first instance approach the Head Teacher of the subject concerned. If the problem cannot be resolved at the faculty level, it may be referred to the Assessment Review Committee (Principal, a Deputy Principal and the Head Teacher Teaching & Learning), who will convene to consider the particular case.

Queries about the marks awarded for a task CAN ONLY be considered if made when the task is handed back to the class.

6. Malpractice

Students who cheat in any way, including plagiarism, make a non-serious attempt, or truant for an assessment task will score zero for the task. In addition, the task will be recorded as a non-attempt in terms of the requirement that students complete tasks which must total more than 50% of available marks. Note: **Cheating occurs when a student attempts to gain an unfair advantage.** The Principal will make all such judgements in consultation with the Review Committee.

Plagiarism is the submitting of work that is not wholly your own, e.g. submitting slabs of text from the internet or a textbook.

7. Non-Serious Attempt

Students studying a Preliminary course must make a genuine attempt to complete course requirements. It is a matter for the teacher's professional judgment to determine whether a student has made a genuine attempt to complete these requirements.

Students who do not make a genuine attempt **must be given zero** and will be required to complete a substitute task.

In the case of competency-based courses, where a student has not successfully completed any units of competency, it is a matter for the teacher's professional judgment to determine whether the attempts made by the student to complete the course are genuine.

Where students are studying a Preliminary course that includes a requisite examination, students must sit for and make a genuine attempt at the examination. If it is determined that a student has not made a genuine attempt to complete course requirements, the Principal must indicate on the appropriate documentation that the course has not been satisfactorily completed.

8. "N" Determinations

NESA has delegated to principals the authority to determine if students seeking the award of the Higher School Certificate at their school have satisfactorily completed each NESA Developed and/or NESA Endorsed Course in which they are enrolled in accordance with the requirements issued by NESA.

Principals therefore will determine if there is sufficient evidence that each student has applied diligence and sustained effort to the set tasks and experiences provided in the course by the school.

Principals may determine an appropriate attendance pattern(s) that will allow each student to achieve the outcomes of each course being studied. **Principals may determine that, as a result of absence, the course completion criteria may not be met.** Clearly, absences will be regarded seriously by principals who will give students early warning of the consequences of such absences. Warning letters will relate the student's absence to the non-completion of course requirements.

9. Warnings

If at any time it appears that a student is at risk of being given an "N" (Non-completion of course requirements) determination in any course, including VET courses, the Principal will warn the student as soon as possible and advise the parent or guardian (if the student is under 18 years of age) in writing. This warning will be given in time for the problem to be corrected and will provide advice about the possible consequences of an "N" determination in a course on Higher School Certificate eligibility.

Students who have not complied with the requirements for satisfactory completion of a course at the time of finalising assessments cannot be regarded as having satisfactorily completed the course.

10. Record of School Achievement – ROSA

Students leaving school prior to the conclusion of the HSC are eligible to apply for a Record of School Achievement. Applications for the ROSA credential are made directly to NESA.

C. School Assessments under Examination Conditions

11. School Assessments under Examination Conditions

*In school assessments are often carried out under examination conditions. Wyndham College uses examination procedures modelled on those used for NESAs external examinations. The majority of students meet expectations. Students need to be aware of the examination **Procedures and Code of Conduct** (see below). They ensure the smooth running of examinations and an environment in which all students are able to respond to the best of their ability without disruption from others.*

12. Examination Protocols, Procedures and Code of Conduct

- Wear school uniform. This assists the supervisor identify you as a student of this campus. Bring all necessary equipment in a CLEAR ZIP LOCK BAG or CLEAR PENCIL CASE. A black or blue pen, pencil, pencil sharpener, eraser, highlighter and ruler marked in mms and cms are allowed in ALL examinations.
- For examinations requiring a calculator use only a NESAs approved calculator. Make sure it is fully charged.
- You may bring a clear bottle of water into the examination; you cannot leave to refill it.
- Supervisors have the right to inspect any equipment you bring into the examination room.
- Arrive at the exam room 20 minutes before examination start time. It can take some time to find your seat. A seating map will be placed on the outside of the HALL to help you.
- Organise your transport to be on time for examinations.
- If you arrive late, entry into the examination will be at the supervisors' discretion.
- Sit at your allocated desk. Do not swap name place cards.
- Remove your watch and place it in clear view on the desk in front of you. It cannot be a programmable watch.
- When instructed, thoroughly check your examination paper – it is possible that pages are missing or there has been an error in the printing.
- Reading time is for reading only. NO writing or highlighting may be undertaken during reading time.
- Read instructions carefully, noting requirements for the use of answer booklets.
- Supervisors are NOT able to interpret questions.
- Write your name or NESAs number, as instructed by the supervisor, on every page of your answer booklet.
- Write in black or blue pen, preferably black.
- Stop writing immediately you are instructed to do so.
- Arrange completed answers according to supervisor's instructions.
- Do not remove examination papers from the examination room.
- Only leave the examination room when the supervisor says it is OK to do so. Leave immediately, when instructed to do so.
- If you are ill or a problem exists during the examination notify the supervisor immediately, by quietly raising your hand.

Students must NOT:

- Borrow equipment from other students.
- Take mobile phones or programmable watches or other electronic devices into the examination room. They must be switched off and in your bag.
- Speak or communicate to anyone other than a supervisor during the examination. Behave in a manner that is likely to disturb or disrupt other students.
- Bring any food or drink into the exam hall.
- Participate in any form of malpractice. Cheating or malpractice may result in zero marks being awarded, an 'N' determination issued and/or being placed on the **NESAs Academic Malpractice Register**.

What you must do if you are unwell on the morning of the exam

You or your parent/guardian **MUST** contact the school **BOTH** by phone at 92087100 and email the Head Teacher and Course Coordinator. They need to know on the day of the examination that you will not be attending **the morning of the exam**. Creating your misadventure application starts

here. You are required to get a Medical Certificate for the day(s) you are absent. You need to keep your teachers informed and notify them about your return to school and organise sitting the trial examination for that course on your return to school. *PLEASE NOTE: YOU MUST COMPLETE THE EXAMINATION ON THE DAY YOU RETURN TO SCHOOL.*

A medical certificate is an essential component of a successful Medical Misadventure Applications. You need to complete a [form](#) available on the school website hardcopies are also available from the school [website](#). [STUDENT APPEAL FORM - Illness Misadventure](#).

If you are ill or have a major problem on the morning of the examination:

Notify your Year Deputy or the front office (9208 7100)) as soon as possible, and make an Illness/misadventure application as soon as you return to school.

Note: Illness/misadventure appeals require a Medical Certificate

Sample Warning Letter



WYNDHAM COLLEGE

Nirimba Education Precinct
Eastern Road, NIRIMBA FIELDS NSW 2763
PO Box 117 Quakers Hill 2763
Phone: 9208 7100
Email: wyndhamcol-h.school@det.nsw.edu.au

Date:

Dear

OFFICIAL WARNING – Non-completion of a Year 11 Course

I am writing to advise that your son/daughter, _____, is in danger of not meeting the requirements for satisfactory completion of the Year 11 course in _____.

The NSW Education Standards Authority (NESA) requires schools to issue students who are in danger of not meeting course requirements with official warnings in order to give them the opportunity to correct the problem. A minimum of two course-specific warnings must be issued prior to a final non-completion of course determination being made.

This is no. X official warning letter we have issued notifying you that _____ is at risk of not completing the above course.

Criteria for satisfactory completion of a course

For a student to satisfactorily complete a course, NESA requires the principal to have sufficient evidence that the student has:

- a) followed the course developed or endorsed by the NESA; and
- b) applied themselves with diligence and sustained effort to the set tasks and experiences provided in the course by the school; and
- c) achieved some or all of the outcomes.

Where it is determined that a student has not met the Course Completion Criteria, they place themselves at risk of receiving a determination of non-completion of course requirements. This will mean that the course will not be listed on the student's Record of School Achievement and may affect the student's eligibility for the Higher School Certificate. It may also mean that the student is unable to proceed to the Year 12 HSC course if they have not completed the Year 11 course.

_____ is not currently meeting one or more of these requirements.

The following course requirements are listed below:

Task name/Course Requirement/Course Outcome	Percentage Weighting	Date Task Initially Due	Action Required by Student	Date to be Completed by

Action by parent/guardian

To support _____ in meeting the course requirements, we request that you discuss this matter with him/her, and encourage and support him/her to carry out the required actions. Should you wish to discuss this matter further, please do not hesitate to contact the Head Teacher, _____ on 9208 7100.

Please complete the acknowledgement below and return it to the school. Please feel free to add additional comments if you wish.

Yours sincerely

Class Teacher

Head Teacher

Deputy Principal

Please detach this section and return to the school

Acknowledgement of Official Warning

I have received the letter dated _____ advising me that _____ is in danger of not meeting course requirements for _____, and am aware that this is official warning no. X.

I am aware that any course not satisfactorily completed will not be listed on the student's Record of School Achievement and may affect the student's eligibility for the Higher School Certificate. I am also aware that it may mean that the student is unable to proceed to the Higher School Certificate course.

Parent/Guardian's signature _____ Date _____

Student's signature _____ Date _____



STUDENT APPEAL FORM

Attach copies of all evidence and return to the Front Office - no later than 2 working days after you have been given the decision regarding your Illness/Misadventure appeal.

Student Details
Name: _____
Connect Group: _____
Course: _____
Teacher: _____
Task Due Date: _____
Date Submitted / Completed: _____
Home Address: _____ _____
Parent / Guardian Name: _____
Contact Number: _____
Evidence to support appeal: (List documents attached)

Type of Task
<input type="checkbox"/> Hand in <input type="checkbox"/> Exam / Test <input type="checkbox"/> Oral / Performance <input type="checkbox"/> Work Placement <input type="checkbox"/> Other: _____
This form is to explain why you wish to appeal the decision of your Illness Misadventure request:
<input type="checkbox"/> Process not followed correctly <input type="checkbox"/> Other: _____

Student Comment

Outline the reason for your appeal:

.....

.....

.....

Student signature & date

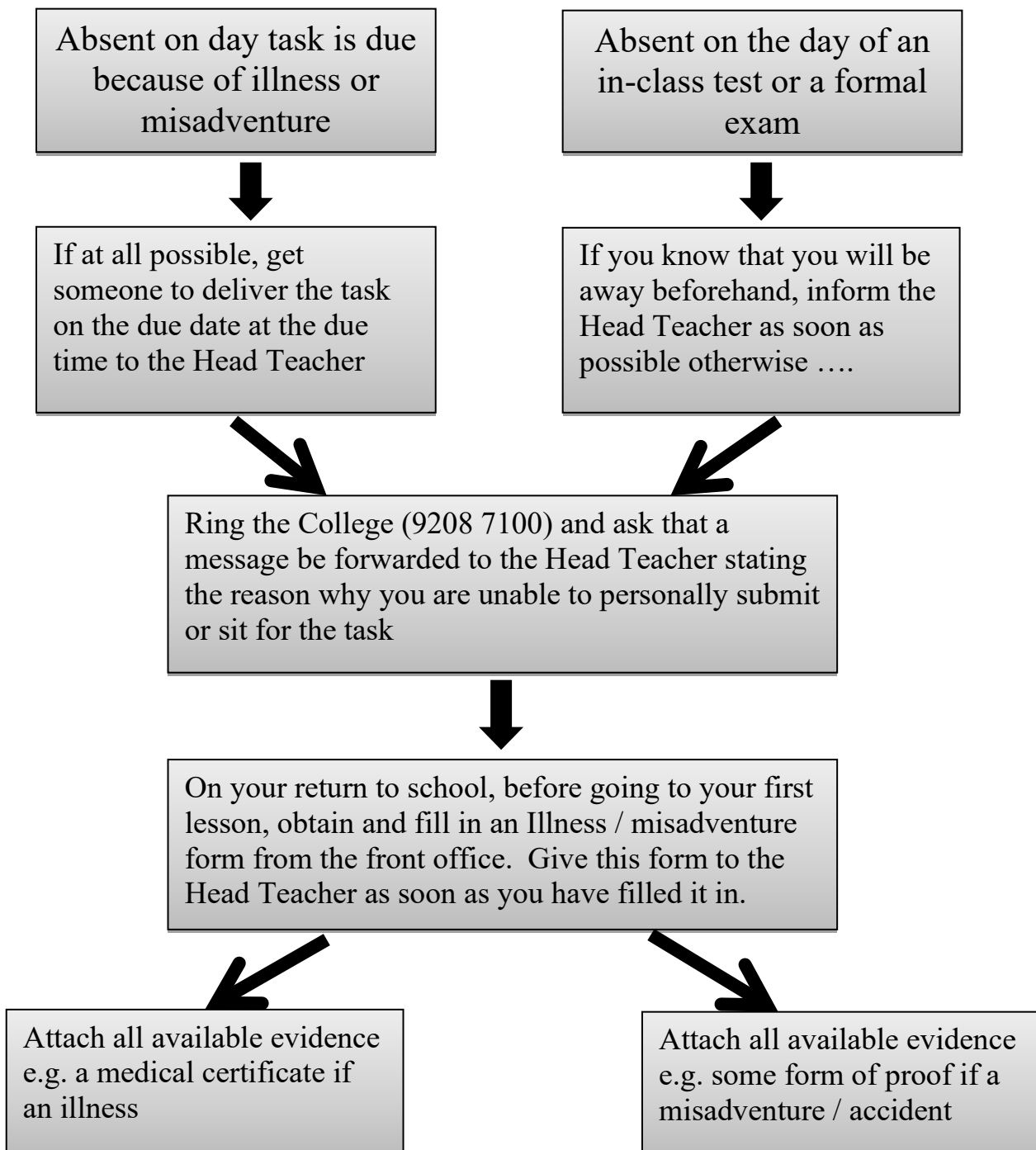
Date appeal form received from student:

Appeal Committee date

Upheld Denied

Procedures to Follow if Assessment Tasks are Missed

Assessment procedures to follow



Days missed = years lost

A day here and there doesn't seem like much, but...

When your child misses just... they miss weeks per year and years over their school life

1 day per fortnight = **4** weeks = Over **1** year missed

1 day per week = **8** weeks = Over **2.5** years missed

education.nsw.gov.au



Attendance matters means explaining all absences



If your child is:

- Sick
- Has a medical appointment
- Has to travel for family business
- Involved in Sorry Business



Let us know

So we can plan continued support for your child's learning and wellbeing

Every day matters



Aboriginal Studies

	TASK 1	TASK 2	TASK 3	
Name of task	<i>Aboriginality and the Land + Research and Inquiry Methods</i>	<i>Heritage and Identity</i>	<i>End of Course Examination</i>	
Type of task	Research Task	Research Task	Examination	
Date of task	Term 1 Week 10	Term 2 Week 10	Term 3 Weeks 9 - 10	
Outcomes assessed	P1.1, P1.2, P2.1, P2.3, P4.1, P4.2	P4.1, P3.3, P4.3	P1.3 P2.1, P2.2, P3.1, P3.2, P3.3	
Component				Weighting
Knowledge and understanding of course content	10	15	15	40
Investigating, analysis, synthesis and evaluation of information from a variety of sources	5	5	5	15
Research and inquiry methods, including aspects of the local community case study	10	5	5	20
Communication of information, ideas and issues in appropriate forms	5	5	15	25
Total %	30	30	40	100

Calendar

Week	Term 1	Term 2	Term 3
1		Heritage and Identity	Comparative Study
2	Aboriginality and Land	Heritage and Identity	Comparative Study
3	Aboriginality and Land	Heritage and Identity	Comparative Study
4	Aboriginality and Land	Heritage and Identity	Comparative Study
5	Aboriginality and Land	Heritage and Identity	Comparative Study
6	Aboriginality and Land	Focus Week	Comparative Study
7	Aboriginality and Land	Heritage and Identity	Revision
8	Aboriginality and Land	Heritage and Identity	Revision
9	Aboriginality and Land	Heritage and Identity	Task 3 - End of Course Exam
10	Task 1	Task 2	Task 3 - End of Course Exam
11	Heritage and Identity		

*Topic IV – Research & Inquiry of Local Community is embedded within all 3 topics.

Ancient History

	TASK 1	TASK 2	TASK 3	
Name of task	<i>Troy</i>	<i>Historical Investigation</i>	<i>End of Course Examination</i>	
Type of task	Source Analysis	Independent Research Project	Examination	
Date of task	Term 1 Week 10	Term 2 Week 6	Term 3 Weeks 9 - 10	
Outcomes assessed	AH11-4, AH11-6, AH11-7, AH11-9, AH11-10	AH11-2, AH11-3, AH11-5, AH11-6, AH11-8, AH11-9	AH11-1, AH11-2, AH11-3, AH11-4, AH11-5, AH11-6, AH11-7, AH11-9, AH11-10	
Component				Weighting
Knowledge and understanding of course content	10		30	40
Historical skills in the analysis and evaluation of sources and interpretations	10	5	5	20
Historical inquiry and research	5	15		20
Communication of historical understanding in appropriate forms	5	10	5	20
Total %	30	30	40	100

Calendar

Week	Term 1	Term 2	Term 3
1		Historical Investigation	Celtic and Egyptian Death & Funerary Customs
2	Investigating Ancient History: Historical Reliability and Authenticity	Historical Investigation	Celtic and Egyptian Death & Funerary Customs
3	Investigating Ancient History: Historical Reliability and Authenticity	Historical Investigation	Celtic and Egyptian Death & Funerary Customs
4	Investigating Ancient History: Historical Reliability and Authenticity	Historical Investigation	Celtic and Egyptian Death & Funerary Customs
5	Case Study: Troy	Historical Investigation	Celtic and Egyptian Death & Funerary Customs
6	Case Study: Troy	Focus Week TASK 2	Celtic and Egyptian Death & Funerary Customs
7	Case Study: Troy	Case Study: Palmyra	Celtic and Egyptian Death & Funerary Customs
8	Case Study: Troy	Case Study: Palmyra	Celtic and Egyptian Death & Funerary Customs
9	Case Study: Troy	Case Study: Palmyra	Task 3 - End of Course Exam
10	TASK 1	Case Study: Palmyra	Task 3 - End of Course Exam
11	Historical Investigation		

Biology

	TASK 1	TASK 2	TASK 3	
Name of task	Depth Study	Module Review	End of Course Examination	
Type of task	Secondary Research Practical Investigation In-class Quiz	Modules 1 & 2 Review Data Analysis and Scientific Skills	Examination	
Date of task	Term 1 Week 10	Term 2 Week 6	Term 3 Weeks 9 - 10	
Outcomes assessed	BIO11/12-1, BIO11/12-3, BIO11/12-4, BIO11/12-5, BIO11/12-7, BIO11-8	BIO11/12-2, BIO11/12-4, BIO11/12-5, BIO11-8, BIO11-9	BIO11/12-6 BIO11/12-7 BIO11-8 BIO11-9 BIO11-10 BIO11-11	
Component				Weighting
Skills in Working Scientifically	20	20	20	60
Knowledge and understanding	10	10	20	40
Total %	30	30	40	100

Calendar

Week	Term 1	Term 2	Term 3
1		Nutrient and Gas Requirements	Evidence for Evolution
2	Working Scientifically	Nutrient and Gas Requirements	Evidence for Evolution
3	Module 1 – Cells as the Basis of Life	Nutrient and Gas Requirements	Completion of Module 4
4	Cell Structure Introduce Depth Study	Nutrient and Gas Requirements Transport	Module 4 – Ecosystem Dynamics Population Dynamics
5	Cell Structure Work on Depth Study	Transport	Population Dynamics Past Ecosystems
6	Cell Structure Work on Depth Study	Task 2 - Focus Week Module Review	Past Ecosystems
7	Cell Structure Work on Depth Study	Module 3 – Biological Diversity Effects on Environment	Future Ecosystems
8	Cell Function Practical Investigations Work on Depth Study	Effects on Environment Adaptations	Future Ecosystems Revision
9	Practical Investigations Work on Depth Study	Adaptations Theory of Evolution by Natural Selection	Task 3 - End of Course Exam
10	Task 1 – Depth Study Due	Theory of Evolution by Natural Selection	Task 3 - End of Course Exam
11	Module 2 – Organisation of Living Things Organisation of Cells		

Business Studies

	TASK 1	TASK 2	TASK 3	
Name of task	<i>Business Report</i>	<i>Shark Tank</i>	<i>End of Course Examination</i>	
Type of task	Report	Project	Exam	
Date of task	Term 1 Week 9	Term 2 Week 9	Term 3 Weeks 9 - 10	
Outcomes assessed	P1, P2, P9	P5, P7,P8	P3, P4, P6, P10	
Component				Weighting
Knowledge and understanding of course content	10	10	20	40
Stimulus-based skills	10		10	20
Inquiry and research	5	15		20
Communication of business information, ideas and issues in appropriate forms	5	10	5	20
Total %	30	35	35	100

Calendar

Week	Term 1	Term 2	Term 3
1		Business Management	Business Planning
2	Nature of Business	Business Management	Business Planning
3	Nature of Business	Business Management	Business Planning
4	Nature of Business	Business Management	Business Planning
5	Nature of Business	Business Management	Business Planning
6	Nature of Business	Focus Week	Business Planning
7	Nature of Business	Business Management	Business Planning
8	Business Management	Business Management	Business Planning
9	Task 1	Task 2	Task 3 - End of Course Exam
10	Business Management	Business Planning	Task 3 - End of Course Exam
11	Business Management		

Chemistry

	TASK 1	TASK 2	TASK 3	
Name of task	Depth Study	Module Review	End of Course Examination	
Type of task	Secondary Research Practical Investigation In-class Quiz	Modules 1 & 2 Review Data Analysis Scientific Skills	Exam	
Date of task	Term 1 Week 11	Term 2 Week 6	Term 3 Weeks 9 - 10	
Outcomes assessed	CH11/12-1, CH11/12-3, CH11/12-4, CH11/12-5, CH11/12-7, CH11-8	CH11/12-2, CH11/12-6, CH11/12-7, CH11/12-8, CH11-9	CH11/12-4, CH11/12-6, CH11/12-8, CH11/12-9, CH11/12-10, CH11/12-11	
Component				Weighting
Skills in Working Scientifically	15	25	20	60
Knowledge and Understanding	10	10	20	40
Total %	25	35	40	100

Calendar

Week	Term 1	Term 2	Term 3
1		Module 2: Introduction to Quantitative Chemistry Study of Mole concept	Rates of chemical reactions
2	Scientific methods & depth study instructions	Study of Mole concept	Module 4: Drivers of reactions Energy changes in chemical reactions
3	Module 1: Properties and structure of matter Depth Study introduced	Study of Mole concept Concentration and molarity	Energy changes in chemical reactions Enthalpy and Hess's Law
4	Properties of matter Work on Depth Study	Concentration and molarity	Enthalpy and Hess's Law
5	Atomic structure and atomic mass Work on Depth Study	Concentration and molarity Gas laws	Enthalpy and Hess's Law Entropy and Gibbs energy
6	Atomic structure and atomic mass Work on Depth Study	Focus Week Task 2 – Modules 1 & 2 Review	Entropy and Gibbs energy
7	Periodicity – Periodic Table Work on Depth Study	Gas laws Module 3: Relative Chemistry Types of Chemical Reactions	Revision
8	Types of Bonding Work on Depth Study	Types of chemical reactions Predicting reaction of metals	Revision
9	Types of Bonding Work on Depth Study	Predicting reaction of metals	Task 3 - End of Course Exam
10	Work on Depth Study	Rates of chemical reactions	Task 3 - End of Course Exam
11	Task 1 Due – Depth Study		

Community and Family Studies

	TASK 1	TASK 2	TASK 3	
Name of task	Group Dynamics Analysis	Childhood Socialisation Study	End of Course Examination	
Type of task	Case Study	Media Investigation & Response	Examination	
Date of task	Term 2 Week 6	Term 3 Week 6	Term 3 Weeks 9 - 10	
Outcomes assessed	P2.1, P2.3, P4.1, P4.2	P2.2, P3.2, P4.1, P4.2	P1.1–P6.2	
Component				Weighting
Knowledge and understanding of course content	10	15	15	40
Skills in critical thinking, research methodology, analysing and communicating	25	20	15	60
Total %	35	35	30	100

Calendar

Week	Term 1	Term 2	Term 3
1		Individuals and Groups	Families and Communities
2	Resource Management	Individuals and Groups	Families and Communities
3	Resource Management	Individuals and Groups	Families and Communities
4	Resource Management	Individuals and Groups	Families and Communities
5	Resource Management	Individuals and Groups	Families and Communities
6	Resource Management	Focus Week – Task 1 due	Families and Communities Task 2 due
7	Resource Management	Individuals and Groups	Families and Communities
8	Individuals and Groups	Families and Communities	Exam Preparation
9	Individuals and Groups	Families and Communities	Task 3 - End of Course Exam
10	Individuals and Groups	Families and Communities	Task 3 - End of Course Exam
11	Individuals and Groups		

Dance

	TASK 1	TASK 2	TASK 3	
Name of task	Safe Dance Practice and Performance Self Evaluation	Composition	Part A – Appreciation Extended Response Part B - Performance	
Type of task	Dance Performance Film Analysis Discussion	Dance Composition Journal Discussion	Part A: One Extended Response Ochres Dance Analysis Part B: Dance Performance	
Date of task	Term 1 Week 10	Term 2 Week 10	Term 3 Weeks 9 - 10	
Outcomes assessed	P2.1, P2.2, P2.3 P1.1, P1.2	P3.1, P3.2, P3.3, P3.4 P1.2	P2.4, P2.5, P2.6 P4.1, P4.2, P4.4 P1.3	
Component				Weighting
Performance	30		10	40
Composition		30		30
Appreciation			30	30
Total %	30	30	40	100

Calendar

Week	Term 1	Term 2	Term 3
1		Composition – Space/Time/ Dynamics	Appreciation- Development of Dance in Australia
2	Performance – Warm-Up/Cooldown + Body Skills - Turn	Composition – Space/Time/ Dynamics Appreciation- Development of Dance in Australia	Appreciation- Development of Dance in Australia Performance - Strength
3	Performance – Alignment Body Skills - Fall	Composition – Space/Time/ Dynamics	Appreciation – Dance Analysis
4	Performance – Stretching Body Skills - Elevations	Composition – Stimulus Appreciation- Development of Dance in Australia	Appreciation – Dance Analysis Performance - Endurance
5	Performance – Body awareness/Body Limitations – FILMING - Body Skills – Leg Extension & balance	Composition – Stimulus Appreciation- Development of Dance in Australia	Appreciation – Dance Analysis
6	Performance – Causes, Prevention and treatment of injury Body Skills – Leap/jump & locomotor movement	Focus Week	Appreciation – Dance Analysis Performance – Coordination & Performance Quality
7	Performance – Body Maintenance Body Skills – Movement into and out of the ground	Composition – Motif into phrase	Appreciation – Dance Analysis
8	Performance – Components of a Dance Class Body Skills – Movement in parallel/movement in turnout	Composition – Organisation of the dance Appreciation- Development of Dance in Australia	Appreciation – Dance Analysis Performance – Performance Quality
9	Performance – Revision of Safe Dance Practice	Composition – Organisation of the dance	Task 3 – Performance & End of Course Exam
10	Performance Assessment Due Task 1 - Performance	Task 2 - Composition	Task 3 – Performance & End of Course Exam
11	Performance – Training		

Design and Technology

	TASK 1	TASK 2	TASK 3	
Name of task	<i>Research Project</i>	<i>Mini DP</i>	<i>End of Course Examination</i>	
Type of task	Designer investigation written, product concept creation	Preliminary Project	Examination	
Date of task	Term 1 Week 8	Term 3 Week 7	Term 3 Weeks 9 -10	
Outcomes assessed	P1.1, P2.1, P2.2, P6.1	P3.1, P4.1, P4.2, P4.3, P5.3	P5.1, P5.2, P6.2	
Component				Weighting
Knowledge and understanding of course content	10	10	20	40
Knowledge and skills in designing, managing, producing and evaluating design projects	20	30	10	60
Total %	30	40	30	100

Calendar

Week	Term 1	Term 2	Term 3
1		Design Research / Theory & Practical	Design Research / Theory & Practical / MDP
2	Design Research / Theory & Practical	Design Research / Theory & Practical	Design Research / Theory & Practical / MDP
3	Design Research / Theory & Practical	Design Research / Theory & Practical / MDP	Design Research / Theory & Practical / MDP
4	Design Research / Theory & Practical	Design Research / Theory & Practical / MDP	Design Research / Theory & Practical / MDP
5	Design Research / Theory & Practical	Design Research / Theory & Practical / MDP	Design Research / Theory & Practical / MDP
6	Design Research / Theory & Practical	Focus Week	Design Research / Theory & Practical / MDP
7	Design Research / Theory & Practical	Design Research / Theory & Practical / MDP	Task 2:
8	Task 1	Design Research / Theory & Practical / MDP	Revision
9	Design Research / Theory & Practical	Design Research / Theory & Practical / MDP	Task 3 -End of Course Exam
10	Design Research / Theory & Practical	Design Research / Theory & Practical / MDP	Task 3 -End of Course Exam
11	Design Research / Theory & Practical		

Drama

	TASK 1	TASK 2	TASK 3	
Name of task	<i>Improvisation and Playbuilding</i>	<i>Theatrical Traditions and Performance Styles</i>	<i>End of Course Examination</i>	
Type of task	Group Devised Performance & Logbook	Monologue Performance Rationale & Logbook	Written Examination, Design & Performance	
Date of task	Term 1 Week 8	Term 2 Week 9	Term 3 Weeks 9 - 10	
Outcomes assessed	P1.2, P1.5, P2.1, P3.1	P1.3, P1.6, P2.4, P3.2	P1.1, P1.4, P2.2, P2.3, P3.3	
Component				Weighting
Making	15	15	10	40
Performing	10	10	10	30
Critically Studying	5	5	20	30
Total %	30	30	40	100

Calendar

Week	Term 1	Term 2	Term 3
1		Topic 2	Topic 3
2	Topic 1	Topic 2	Topic 3
3	Topic 1	Topic 2	Topic 3
4	Topic 1	Topic 2	Topic 3
5	Topic 1	Topic 2	Topic 3
6	Topic 1	Focus Week	Topic 3
7	Topic 1	Topic 2	Topic 3
8	Task 1	Topic 2	Topic 3
9	Topic 1	Task 2	Task 3 - End of Course Exam
10	Topic 2	Topic 2	Task 3 - End of Course Exam
11	Topic 2		

Economics

	TASK 1	TASK 2	TASK 3	
Name of task	<i>Economics Topic Test</i>	<i>Research Essay-Labour Market</i>	<i>End of Course Examination</i>	
Type of task	Test	Written	Examination	
Date of task	Term 1 Week 8	Term 2 Week 6	Term 3 Weeks 9 - 10	
Outcomes assessed	P1, P2, P4, P7	P5, P6, P8, P9	P1, P2, P3, P10, P11, P12	
Component				Weighting
Knowledge and understanding of course content	10	10	20	40
Stimulus-based skills	10		10	20
Inquiry and research		10	10	20
Communication of economic information, ideas and issues in appropriate forms	10	10		20
Total %	30	30	40	100

Calendar

Week	Term 1	Term 2	Term 3
1		Markets	Financial Markets
2	Introduction to Economics	Markets	Financial Markets
3	Introduction to Economics	Labour Markets	Government in the Economy
4	Introduction to Economics	Labour Markets	Government in the Economy
5	Introduction to Economics	Labour Markets	Government in the Economy
6	Consumers and Business	Task 2 - Focus Week	Government in the Economy
7	Consumers and Business	Labour Markets	Government in the Economy
8	Task 1	Financial Markets	Government in the Economy
9	Markets	Financial Markets	Task 3 - End of Course Exam
10	Markets	Financial Markets	Task 3 - End of Course Exam
11	Markets		

Engineering Studies

	TASK 1	TASK 2	TASK 3	
Name of task	Engineered Products	Engineering Report	End of Course Examination	
Type of task	Product Analysis	Report	Yearly Examination	
Date of task	Term 1 Week 10	Term 2 Week 7	Term 3 Weeks 9 - 10	
Outcomes assessed	P4.1, P4.2, P4.3, P6.1	P2.2, P3.2, P5.1, P6.2	P1.1, P1.2, P2.1, P3.1, P3.3, P5.2	
Component				Weighting
Knowledge and understanding of course content	10	10	40	60
Knowledge and skills in research, problem solving and communication related to engineering practice	20	20		40
Total %	30	30	40	100

Calendar

Week	Term 1	Term 2	Term 3
1		Engineered Products	Braking Systems
2	Engineering Fundamentals	Engineered Products	Braking Systems
3	Engineering Fundamentals	Engineered Products	Biomedical Engineering
4	Engineering Fundamentals	Engineered Products	Biomedical Engineering
5	Engineering Fundamentals	Engineered Products	Biomedical Engineering
6	Engineering Fundamentals	Focus Week	Biomedical Engineering
7	Engineered Products	Task 2	Biomedical Engineering
8	Engineered Products	Braking Systems	Biomedical Engineering
9	Engineered Products	Braking Systems	Task 3 - End of Course Exam
10	Task 1 Engineered Products	Braking Systems	Task 3 - End of Course Exam
10	Engineered Products		

English (Advanced)

	TASK 1	TASK 2	TASK 3	
Name of task	<i>Reading to Write</i>	<i>Multimodal Presentation</i>	<i>End of Course Examination</i>	
Type of task	Writing Task with Reflection	Interactive ICT Presentation	Examination	
Date of task	Term 1 Week 9	Term 2 Week 9	Term 3 Weeks 9 - 10	
Outcomes assessed	EN11-2, EN11-3, EN11-5, EN11-9	EN11-1, EN11-2, EN11-3, EN11-5, EN11-7	EN11-1, EN11-3, EN11-5, EN11-6, EN11-8	
Component				Weighting
Knowledge and understanding of course content	15	20	15	50
Skills in responding to texts and communication of ideas appropriate to audience, purpose and context across all modes	15	20	15	50
Total %	30	40	30	100

Calendar

Week	Term 1	Term 2	Term 3
1		Module A	Module B
2	Reading to Write	Module A	Module B
3	Reading to Write	Module A	Module B
4	Reading to Write	Module A	Module B
5	Reading to Write	Module A	Module B
6	Reading to Write	Focus Week	Module B
7	Reading to Write	Module A	Module B
8	Reading to Write	Module A	Module B
9	Task 1	Task 2	Task 3 - End of Course Exam
10	Module A	Module B	Task 3 - End of Course Exam
11	Module A		

English (Standard)

	TASK 1	TASK 2	TASK 3	
Name of task	<i>Reading to Write</i>	<i>Multimodal Presentation</i>	<i>End of Course Examination</i>	
Type of task	Writing Task with Reflection	Interactive ICT presentation	Examination	
Date of task	Term 1 Week 9	Term 2 Week 9	Term 3 Weeks 9 - 10	
Outcomes assessed	EN11-2, EN11-3, EN11-5, EN11-9	EN11-1, EN11-2, EN11-3, EN11-5, EN11-7	EN11-1, EN11-3, EN11-5, EN11-6, EN11-8	
Component				Weighting
Knowledge and understanding of course content	15	20	15	50
Skills in responding to texts and communication of ideas appropriate to audience, purpose and context across all modes	15	20	15	50
Total %	30	40	30	100

Calendar

Week	Term 1	Term 2	Term 3
1		Module A	Module B
2	Reading to Write	Module A	Module B
3	Reading to Write	Module A	Module B
4	Reading to Write	Module A	Module B
5	Reading to Write	Module A	Module B
6	Reading to Write	Focus Week	Module B
7	Reading to Write	Module A	Module B
8	Reading to Write	Module A	Module B
9	Task 1	Task 2	Task 3 - End of Course Exam
10	Module A	Module B	Task 3 - End of Course Exam
11	Module A		

English as an Additional Language or Dialect

	TASK 1	TASK 2	TASK 3	
Name of task	<i>Point of view writing task Language and Texts in Context</i>	<i>Multimodal presentation Close Study of Text</i>	<i>End of Course Examination</i>	
Type of task	Writing task	Multimodal presentation	Examination	
Date of task	Term 1 Week 9	Term 2 Week 9	Term 3 Week 9 - 10	
Outcomes assessed	EAL11-1B, EAL11-3, EAL11-4, EAL11-7	EAL11-1A, EAL11-2, EAL11-3, EAL11-5, EAL11-9	EAL11-1A, EAL11-3, EAL11-5, EAL11-6, EAL11-8	
Component				Weighting
Knowledge and understanding of course content	15	20	15	50
Skills in responding to texts and communication of ideas appropriate to audience, purpose and context across all modes	15	20	15	50
Total %	30	40	30	100

Calendar

Week	Term 1	Term 2	Term 3
1		Close Study of Text	Texts and Society
2	Language and Texts in Context	Close Study of Text	Texts and Society
3	Language and Texts in Context	Close Study of Text	Texts and Society
4	Language and Texts in Context	Close Study of Text	Texts and Society
5	Language and Texts in Context	Close Study of Text	Texts and Society
6	Language and Texts in Context	Focus Week	Texts and Society
7	Language and Texts in Context	Close Study of Text	Revision
8	Language and Texts in Context	Close Study of Text	Revision
9	Task 1	Task 2	Task 3 - End of Course Exam
10	Language and Texts in Context	Texts and Society	Task 3 - End of Course Exam
11	Language and Texts in Context		

English Extension 1

	TASK 1	TASK 2	TASK 3	
Name of task	<i>Imaginative Response & Reflection</i>	<i>Multimodal Presentation Speculative Fiction TED Talk</i>	<i>End of Course Examination</i>	
Type of task		Presentation Research Task	Examination	
Date of task	Term 1 Week 11	Term 2 Weeks 9 - 10	Term 3 Week 9 - 10	
Outcomes assessed	EE11-1, EE11-2, EE11-6	EE11-1, EE11-2, EE11-3, EE11-4, EE11-5	EE11-1, EE11-2, EE11-3, EE11-4, EE11-5	
Component				Weighting
Knowledge and understanding of texts and why they are valued	15	20	15	50
Skills in complex analysis, composition and investigation	15	20	15	50
Total %	30	40	30	100

Calendar

Week	Term 1	Term 2	Term 3
1		Speculative Fiction: <i>Children of Men (Cuaron)</i>	Speculative Fiction: <i>The Natural Way of Things (Wood)</i>
2	Speculative Fiction: <i>The Handmaid's Tale (Atwood)</i>	Speculative Fiction: <i>Children of Men (Cuaron)</i>	Speculative Fiction: <i>The Natural Way of Things (Wood)</i>
3	Speculative Fiction: <i>The Handmaid's Tale (Atwood)</i>	Speculative Fiction: <i>Children of Men (Cuaron)</i>	Speculative Fiction: <i>The Natural Way of Things (Wood)</i>
4	Speculative Fiction: <i>The Handmaid's Tale (Atwood)</i>	Speculative Fiction: <i>Children of Men (Cuaron)</i>	Speculative Fiction: <i>The Handmaid's Tale (Atwood)</i>
5	Speculative Fiction: <i>The Handmaid's Tale (Atwood)</i>	Speculative Fiction: <i>The Natural Way of Things (Wood)</i>	Speculative Fiction: <i>The Handmaid's Tale (Atwood)</i>
6	Speculative Fiction: <i>The Handmaid's Tale (Atwood)</i>	Focus Week	Speculative Fiction: <i>Children of Men (Cuaron)</i>
7	Speculative Fiction: <i>The Handmaid's Tale (Atwood)</i>	Speculative Fiction: <i>The Natural Way of Things (Wood)</i>	Speculative Fiction: <i>Children of Men (Cuaron)</i>
8	Speculative Fiction: <i>Children of Men (Cuaron)</i>	Speculative Fiction: <i>The Natural Way of Things (Wood)</i>	Revision
9	Speculative Fiction: <i>Children of Men (Cuaron)</i>	Speculative Fiction: <i>The Natural Way of Things (Wood)</i>	Task 3 - End of Course Exam
10	Task 1	Task 2 – TED Talk Presentations	Task 3 - End of Course Exam
11	Speculative Fiction: <i>Children of Men (Cuaron)</i>		

English Studies

	TASK 1	TASK 2	TASK 3	
Name of task	Mandatory Module: Achieving Through English	Elective Module: On the Road	All modules	
Type of task	Interview and Resumancient Submission	Multimodal Presentation	Collection of classwork and Reflection	
Date of task	Term 1 Week 10	Term 2 Week 10	Term 3 Week 8	
Outcomes assessed	ES11-1, ES11-4, ES11-5 ES11-6	ES11-2, ES11-3, ES11-6, ES11-7, ES11-8, ES11-10	ES11-2, ES11-4, ES11-5, ES11-6, ES11-7, ES11-9, ES11-10	
Component				Weighting
Knowledge and understanding of course content	15	15	20	50
Skills in: <ul style="list-style-type: none"> • comprehending texts • communicating ideas • using language accurately, appropriately and effectively 	15	15	20	50
Total %	30	30	40	100

Calendar

Week	Term 1	Term 2	Term 3
1		Module 1	Module 2
2	Mandatory Module	Module 1	Module 2
3	Mandatory Module	Module 1	Module 2
4	Mandatory Module	Module 1	Module 2
5	Mandatory Module	Module 1	Module 2
6	Mandatory Module	Focus Week	Module 2
7	Mandatory Module	Module 1	Module 2
8	Mandatory Module	Module 1	Task 3
9	Mandatory Module	Module 1	End of Course Examinations
10	Task 1	Task 2	End of Course Examinations
11	Module 1		

Exploring Early Childhood

	TASK 1	TASK 2	TASK 3	
Name of task	<i>Pregnancy and Childbirth Research Pamphlet</i>	<i>Food & Nutrition & Child Health & Safety Practical Task</i>	<i>End of Course Examination</i>	
Type of task	Written	Written / Practical	Examination	
Date of task	Term 1 Week 7	Term 3 Week 7	Term 3 Week 9 - 10	
Outcomes assessed	P1.1, 2.4, 2.5, 5.1	P1.3, 1.5, 6.1	P1.2, 2.5, 2.1, 1.4	
Component				Weighting
Pregnancy and child birth.	35			35
Child Growth & development		10	15	25
Food and Nutrition		20	10	30
Child health and safety			10	10
Total %	35	30	35	100

Calendar

Week	Term 1	Term 2	Term 3
1		Core B: Child Growth & Development	Core C: Promoting Positive Behaviour
2	Core A: Pregnancy and child birth	Core B: Child Growth & Development	Core C: Promoting Positive Behaviour
3	Core A: Pregnancy and child birth	Core B: Child Growth & Development	Module 12&13: Food & Nutrition/ Child Health and Safety
4	Core A: Pregnancy and child birth	Core B: Child Growth & Development	Module 12&13: Food & Nutrition/ Child Health and Safety
5	Core A: Pregnancy and child birth	Core B: Child Growth & Development	Module 12&13: Food & Nutrition/ Child Health and Safety
6	Core A: Pregnancy and child birth	Focus Week	Module 12&13: Food & Nutrition/ Child Health and Safety
7	Task 1	Core B: Child Growth & Development	Task 2 - Practical Assessment
8	Core B: Child Growth & Development	Core C: Promoting Positive Behaviour	Module 12&13: Food & Nutrition/ Child Health and Safety
9	Core B: Child Growth & Development	Core C: Promoting Positive Behaviour	Task 3 - End of Course Exam
10	Core B: Child Growth & Development	Core C: Promoting Positive Behaviour	Task 3 - End of Course Exam
11	Core B: Child Growth & Development		

Film, Video & Digital Imaging

	TASK 1	TASK 2	TASK 3	
Name of task	'Movie Trailer'	Film Critique	Design Project & Short Film	
Type of task	Practical Task: Story Board, Graphic Movie Poster Design & Movie Trailer Submission	Research Task: Study of Film, Explanation, Analysis & Critique Written Submission	Practical Task: Film-making, Three Minute Short Film Animation	
Date of task	Term 1 Week 10	Term 2 Week 5	Term 3 Week 6	
Outcomes assessed	1.1A, 1.2A, 2.1A, 2.2A, 2.3A, 3.1A, 3.3A, 4.1A, 4.3A	1.1A, 1.2A, 2.1A, 2.2A, 2.3A, 3.1A, 3.3A, 4.1A, 4.3A, 5.3A	1.1A, 1.2A, 2.1A, 2.2A, 2.3A, 3.1A, 3.3A, 4.1A, 4.2A, 4.3A, 5.1A, 5.2A, 5.3A	
Component				Weighting
Artmaking	40		30	70
Study of Filmmaking		20	10	30
Total %	40	20	40	100

Calendar

Week	Term 1	Term 2	Term 3
1		Commence Film Critique	Commence Design Project & Animation
2	Introduction to Filmmaking conventions & history	Film Viewing & Analysis	Experimentation and studio practice.
3	Filmmaking conventions & history	The Film Studio, Excursion	Animation techniques
4	Commence Filmmaking and Movie Trailers, the movie poster	Film Viewing & Analysis	Animation techniques
5	Filmmaking and Movie Trailers. Filmmaking history	Task 2 – Film Critique Submission	Progress & submission evaluation
6	Storyboards, Filmmaking and Movie Trailers.	Focus Week	Task 3 – Design Project/Short Film Submission & Evaluation
7	Storyboards, Filmmaking and Movie Trailers.	Filmmaking techniques & theory	Refinement and Post Production Editing
8	Filmmaking and Movie Trailers. The film poster	Filmmaking techniques & theory	Refinement and Post Production Editing
9	Filmmaking and Movie Trailers.	Camera techniques & theory	End of Course Examinations
10	Task 1 – The “Movie Trailer” Submission.	Experimentation and studio practice.	End of Course Examinations
11	Film Review, Critique & Evaluation.		

Food Technology

	TASK 1	TASK 2	TASK 3	
Name of task	Food Availability and Selection	Food Quality	End of Course Examination	
Type of task	PowerPoint Oral presentation and Practical	Practical and Written Report	Exam	
Date of task	Term 1 Week 9	Term 2 Weeks 9 & 10	Term 3 Weeks 9 - 10	
Outcomes assessed	P1.1, P1.2, P3.2, P4.1, P4.2	P2.2, P3.2, P4.1, P4.4, P5.1,	P1.1, P1.2, P2.1, P3.1, P5.1, P4.3	
Component				Weighting
Knowledge and understanding of Food technology	10		10	20
Skills in researching, analysing and communicating food issues	10	10	10	30
Skills in experimenting with and preparing food by applying theoretical concepts		10	10	20
Skills in designing, implementing and evaluating solutions to food situations	10	10	10	30
Total %	30	30	40	100

Calendar

Week	Term 1	Term 2	Term 3
1		Food Quality	Nutrition
2	Food Availability and Selection	Food Quality	Nutrition
3	Food Availability and Selection	Sensory assessment of food	Nutrition
4	Food Availability and Selection	Food Styling, Food Photography	Nutrition
5	Food Availability and Selection	Focus Week	Nutrition
6	Food Availability and Selection	Food service and Catering	Nutrition
7	Food Availability and Selection	Chemical and Physical properties of food	Nutrition
8	Food Availability and Selection	Chemical and Physical properties of food	Nutrition
9	Food Availability and Selection	Practical Assessment Task 2	Task 3 - End of Course Exam
10	Task 1 Practical Assessment Oral Presentation	Practical Assessment Task 2	Task 3 - End of Course Exam
11	Food Quality		

Industrial Technology – Multimedia

	TASK 1	TASK 2	TASK 3	
Name of task	Industry Studies	Preliminary Project	End of Course Examination	
Type of task	Case Study	Preliminary Project	Examination	
Date of task	Term 1 Week 10	Term 3 Week 7	Term 3 Weeks 9 - 10	
Outcomes assessed	P5.1, P6.2, P7.1, P7.2	P2.1, P3.1, P3.2, P3.3, P4.1, P4.2, P4.3, P5.2	P1.1, P2.1, P6.1, P1.2	
Component				Weighting
Knowledge and understanding of course content	10	10	20	40
Knowledge and skills in the management, communication and production of projects	10	30	20	60
Total %	20	40	40	100

Calendar

Week	Term 1	Term 2	Term 3
1		Preliminary Major Project, Industry Study	Preliminary Major
2	WHS, Multimedia tools and skill development	Preliminary Major Project, Industry Study	Preliminary Major
3	WHS, Multimedia tools and skill development	Preliminary Major Project, Industry Study	Preliminary Major
4	WHS, Multimedia tools and skill development	Preliminary Major Project, Industry Study	Preliminary Major
5	WHS, Multimedia tools and skill development	Preliminary Major Project, Industry Study	Preliminary Major
6	WHS, Multimedia tools and skill development	Focus Week	Preliminary Major
7	WHS, Multimedia tools and skill development	Preliminary Major Project, Industry Study	Task 2 - Preliminary Major Project
8	WHS, Multimedia tools and skill development	Preliminary Major	Task 2 - Preliminary Major Project
9	WHS, Multimedia tools and skill development	Preliminary Major	Task 3 – End of Course Exam
10	Task 1 – Industry Studies Preliminary Major Project, Industry Study	Preliminary Major	Task 3 – End of Course Exam
11	Preliminary Major Project, Industry Study		

Industrial Technology – Timber and Furnishings

	TASK 1	TASK 2	TASK 3	
Name of task	Industry Studies	Preliminary Project	End of Course Examination	
Type of task	Case Study	Preliminary Project	Examination	
Date of task	Term 1 Week 10	Term 3 Week 7	Term 3 Weeks 9 - 10	
Outcomes assessed	P5.1, P6.2, P7.1, P7.2	P2.1, P3.1, P3.2, P3.3, P4.1, P4.2, P4.3, P5.2	P1.1, P2.1, P6.1, P1.2	
Component				Weighting
Knowledge and understanding of course content	10	10	20	40
Knowledge and skills in the management, communication and production of projects	10	30	20	60
Total %	20	40	40	100

Calendar

Week	Term 1	Term 2	Term 3
1		Preliminary Major Project, Industry Study	Preliminary Major
2	WHS, Tools used in the Focus Area	Preliminary Major Project, Industry Study	Preliminary Major
3	WHS, Tools used in the Focus Area	Preliminary Major Project, Industry Study	Preliminary Major
4	WHS, Tools used in the Focus Area	Preliminary Major Project, Industry Study	Preliminary Major
5	WHS, Tools used in the Focus Area	Preliminary Major Project, Industry Study	Preliminary Major
6	WHS, Tools used in the Focus Area	Focus Week	Preliminary Major
7	WHS, Tools used in the Focus Area	Preliminary Major Project, Industry Study	Task 2 - Preliminary Major Project
8	WHS, Tools used in the Focus Area	Preliminary Major	Task 2 - Preliminary Major Project
9	Tools used in the Focus Area	Preliminary Major	Task 3 – End of Course Exam
10	Task 1 – Industry Studies Preliminary Major Project, Industry Study	Preliminary Major	Task 3 – End of Course Exam
11	Preliminary Major Project, Industry Study		

Enterprise Computing

	TASK 1	TASK 2	TASK 3	
Name of task	<i>Personal Report</i>	<i>Individual Project</i>	<i>End of Course Examination</i>	
Type of task	Research Report: Principals of Cyber Security	Interactive Media and the User Experience	Examination	
Date of task	Term 1 Week 9	Term 3 Week 2	Term 3 Weeks 9 - 10	
Outcomes assessed	EC – 11-03 EC – 11-06 EC – 11-07 EC – 11-10	EC – 11-01 EC – 11-08 EC – 11-09 EC – 11-11	EC – 11-02 EC – 11-04 EC – 11-05	
Component				Weighting
Knowledge and understanding of course content	20	10	20	50
Knowledge and skills in the practical application of the content	10	25	15	50
Total %	30	35	35	100

Calendar

Week	Term 1	Term 2	Term 3
1		Interactive Media and the User Experience	Networking Systems and Social Computing
2	Principals of Cyber Security	Interactive Media and the User Experience	Task 2
3	Principals of Cyber Security	Interactive Media and the User Experience	Project Presentation
4	Principals of Cyber Security	Interactive Media and the User Experience	Networking Systems and Social Computing
5	Principals of Cyber Security	Interactive Media and the User Experience	Networking Systems and Social Computing
6	Principals of Cyber Security	Focus Week	Networking Systems and Social Computing
7	Principals of Cyber Security	Interactive Media and the User Experience	Networking Systems and Social Computing
8	Principals of Cyber Security	Interactive Media and the User Experience	Revision
9	Task 1	Interactive Media and the User Experience	Task 3 - End of Course Exam
10	Principals of Cyber Security	Interactive Media and the User Experience	Task 3 - End of Course Exam
11	Principals of Cyber Security		

Investigating Science

	TASK 1	TASK 2	TASK 3	
Name of task	Depth Study	Module Review	End of Course Examination	
Type of task	Scientific Research Practical Investigation In-class Quiz	Modules 1 & 2 Review Data Analysis & Scientific Skills	Examination	
Date of task	Term 1 Week 9	Term 2 Week 7	Term 3 Weeks 9 - 10	
Outcomes assessed	INS11/12-1, INS11/12-2, INS11/12-3, INS11/12-4, INS11/12-5, INS11/12-7, INS11-8	INS11/12-4, INS11/12-5, INS11/12-6, INS11/12-7, INS11-8, INS11-9	INS11/12-6, INS11/12-7, INS11-8, INS11-9, INS11-10, INS11-11	
Component				Weighting
Skills in Working Scientifically	30	15	15	60
Knowledge and Understanding	5	15	20	40
Total %	35	30	35	100

Calendar

Week	Term 1	Term 2	Term 3
1		Module 2: Cause and Effect – Inferences and Generalisations Observations and inferences	Completion of Module 3
2	Working Scientifically	Observations and inferences Practical investigations	Module 4: Theories and Laws Introduction and Development of a Theory
3	Module 1: Cause and Effect Role of Observations Introduce Depth Study	Using Secondary-Sourced Data	Development of Theory and Laws
4	Role of Observations – Practical Work on Depth Study	Observing patterns	Development of A Law
5	Observations – Quantitative and Qualitative Work on Depth Study	Developing Inquiry Questions	Application of Theories & Laws in Science
6	Observations – Quantitative and Qualitative Work on Depth Study	Focus Week Task 2 – Module Review	Application of Theories & Laws in Science
7	Observations as Evidence – Primary and Secondary Data Work on Depth Study	Generalisations in science Peer review	Application of Theories & Laws in Science
8	Collecting and Recording Data Work on Depth Study	Module 3: Scientific Models Models to Inform Understanding	Revision
9	Conclusion	What makes a Model Useful? Types of models	Task 3 - End of Course Exam
10	Task 1 – Depth Study due	Constructing a Model	Task 3 - End of Course Exam
11	Completion of Module 1		

Japanese Beginners

	TASK 1	TASK 2	TASK 3	
Name of task	Speech to Rotary & Self-intro	Video to Host Family	End of Course Examination	
Type of task	Written + additional components	Written + additional components	Examination	
Date of task	Term 1 Weeks 9-10	Term 2 Weeks 6	Term 3 Weeks 9 - 10	
Outcomes assessed	2.2, 2.3, 2.6, 3.1, 3.2, 3.3	1.1, 1.2, 1.3, 1.4, 2.1, 2.2, 2.4, 2.5	1.1, 1.2, 1.3, 1.4, 2.1, 2.2, 2.3, 2.4, 2.5, 3.1, 3.2, 3.3	
Component				Weighting
Listening	10	10	10	30
Reading	10	10	10	30
Speaking	5	5	10	20
Writing	5	5	10	20
Total %	30	30	40	100

Calendar

Week	Term 1	Term 2	Term 3
1		U3 Daily Routines	U5 Home and Neighbourhood
2	U1 About Me/Hiragana	U3 Daily Routines	U5 Home and Neighbourhood
3	U1 About Me/Hiragana	U3 Daily Routines	U5 Home and Neighbourhood
4	U1 About Me	U4 Giving Recounts	U5 Home and Neighbourhood
5	U1 About Me	U4 Giving Recounts	U6 Plain Form & Revision
6	U2 Family and Friends	Focus Week Tutorials	U6 Plain Form & Revision
7	U2 Family and Friends	U4 Giving Recounts	U6 Plain Form & Revision
8	U2 Family and Friends	U4 Giving Recounts	U6 Plain Form & Revision
9	U2 Family and Friends	Task 2	Task 3 - End of Course Exam
10	Task 1	Task 2	Task 3 - End of Course Exam
11	Task 1		

Legal Studies

	TASK 1	TASK 2	TASK 3	
Name of task	<i>The Legal System</i>	<i>Individual and the Law</i>	<i>End of Course Examination</i>	
Type of task	Glossary & essay	Research based report	Examination	
Date of task	Term 1 Week 10	Term 2 Week 9	Term 3 Weeks 9 - 10	
Outcomes assessed	P1, P2, P3	P4, P7, P8, P9	P5, P6, P9, P10	
Component				Weighting
Knowledge and understanding of course content	10	10	20	40
Analysis and evaluation	5	10	5	20
Inquiry and research	5	15		20
Communication of legal information, issues and ideas in appropriate forms	5	5	10	20
Total %	25	40	35	100

Calendar

Week	Term 1	Term 2	Term 3
1		The Individual and the Law	Law in Practice
2	The Legal System	The Individual and the Law	Law in Practice
3	The Legal System	The Individual and the Law	Law in Practice
4	The Legal System	The Individual and the Law	Law in Practice
5	The Legal System	The Individual and the Law	Law in Practice
6	The Legal System	Focus Week	Law in Practice
7	The Legal System	The Individual and the Law	Law in Practice
8	The Legal System	The Individual and the Law	Law in Practice
9	The Legal System	Task 2	Task 3 - End of Course Exam
10	Task 1	The Individual and the Law	Task 3 - End of Course Exam
11	The Legal System		

Marine Studies

	TASK 1	TASK 2	TASK 3	
Name of task	<i>Skills & Employment Report</i>	<i>Practical Report</i>	<i>Dangerous Marine Creature Model</i>	
Type of task	Research Report & Mock Interview	Dissection Practical & Report	Model Making, Video & Report	
Date of task	Term 1 Week 7	Term 2 Week 5	Term 3 Week 6	
Outcomes assessed	P1.2, P1.3, P2.1, P2.3, P4.1. P4.2	P1.1, P2.2, P2.3, P3.1, P5.3. P5.4	P1.3, P2.3, P3.4	
Component				Weighting
Knowledge and understanding of course content and outcomes	30	15	15	60
Skills in effective research, experimentation and communication	5	15	20	40
Total %	35	30	35	100

Calendar

Week	Term 1	Term 2	Term 3
1		Life in the Sea	Dangerous Marine Creatures
2	The Marine Environment	Life in the Sea	Dangerous Marine Creatures
3	The Marine Environment	Life in the Sea	Dangerous Marine Creatures
4	The Marine Environment	Life in the Sea	Dangerous Marine Creatures
5	Marine Maritime and Employment	Task 2 – Fish Dissection	Oceanography
6	Marine Maritime and Employment	Focus Week	Task 3 – Dangerous Marine Creatures Model
7	Task 1 – Skills and Employment Report	Humans In Water	Oceanography
8	Marine Safety and First Aid	Humans In Water	Oceanography
9	Marine Safety and First Aid	Humans In Water	End of Course Examinations
10	Marine Safety and First Aid	Humans In Water	End of Course Examinations
11	Optional First Aid Certificate		

Mathematics Advanced

	TASK 1	TASK 2	TASK 3	
Name of task	<i>Topic Review</i>	<i>Investigation Assignment</i>	<i>End of Course Examination</i>	
Type of task	Written	Assignment	Examination	
Date of task	Term 1 Week 8	Term 2 Week 7	Term 3 Weeks 9 - 10	
Outcomes assessed	MA11-1	MA11-1, MA11-2, MA11-3, MA11-8, MA11-9	MA11-1, MA11-2, MA11-3, MA11-4, MA11-5, MA11-7, MA11-9	
Component				Weighting
Understanding, fluency and Communicating	15	15	20	50
Problem Solving Reasoning & Justification	15	15	20	50
Total %	30	30	40	100

Calendar

Week	Term 1	Term 2	Term 3
1		Trigonometry	Probability
2	Algebraic Techniques	Trigonometry	Exponential and Logarithmic Functions
3	Algebraic Techniques	Further Functions	Exponential and Logarithmic Functions
4	Algebraic Techniques	Further Functions	Trigonometric Functions
5	Equations and Inequations	Introduction to Calculus	Trigonometric Functions
6	Equations and Inequations	Focus Week	Discrete Probability Distributions
7	Equations and Inequations	Task 2 Introduction to Calculus	Discrete Probability Distributions
8	Task 1 Equations and Inequations	Introduction to Calculus	Discrete Probability Distributions
9	Functions	Probability	Task 3 - End of Course Exam
10	Functions	Probability	Task 3 - End of Course Exam
11	Trigonometry		

Mathematics Extension 1

	TASK 1	TASK 2	TASK 3	
Name of task	<i>Topic Review</i>	<i>Investigation Assignment</i>	<i>End of Course Examination</i>	
Type of task	Written Review	Assignment	Examination	
Date of task	Term 1 Week 10	Term 2 Week 9	Term 3 Weeks 9 - 10	
Outcomes assessed	ME11-1, ME11-2	ME11-1, ME11-2, ME11-3, ME11-6	ME11-1, ME11-2, ME11-3, ME11-4, ME11-5, ME11-6	
Component				Weighting
Understanding, fluency and Communicating	15	15	20	50
Problem Solving Reasoning & Justification	15	15	20	50
Total %	30	30	40	100

Calendar

Week	Term 1	Term 2	Term 3
1		Polynomials and Inverse Functions	Calculus: Rate of Change
2	Permutations and Combinations	Polynomials and Inverse Functions	Calculus: Motion in a straight line
3	Permutations and Combinations	Polynomials and Inverse Functions	Exponential growth and decay curve
4	Permutations and Combinations	Polynomials and Inverse Functions	Further exponential growth and decay curve
5	Permutations and Combinations	Further Functions	Trigonometric functions Further identities
6	Equations and Inequalities	Focus Week	Inverse trigonometric functions
7	Equations and Inequalities	Further Functions	Properties of inverse trigonometric functions
8	Functions	Further Functions	Revision
9	Polynomials and Inverse Functions	Task 2	Task 3 - End of Course Exam
10	Task 1	Function: Multiple roots of polynomials	Task 3 - End of Course Exam
11	Polynomials and Inverse Functions		

Mathematics Standard

	TASK 1	TASK 2	TASK 3	
Name of task	<i>Investigation assignment</i>	<i>Topic Review</i>	<i>End of Course Examination</i>	
Type of task	Assignment & Validation Test	Written Review	Examination	
Date of task	Term 1 Week 9	Term 2 Week 6	Term 3 Weeks 9-10	
Outcomes assessed	MS11-1, MS11-3, MS11-5, MS11-9, MS11-10	MS11-1, MS11-2, MS11-3, MS11-4, MS11-5, MS11-6, MS11-7, MS11-8	MS11-1, MS11-2, MS11-3, MS11-4, MS11-5, MS11-6, MS11-7, MS11-8, MS11-9, MS11-10	
Component				Weighting
Understanding, Fluency and Communication	15	15	20	50
Problem Solving, Reasoning & justification	15	15	20	50
Total %	30	30	40	100

Calendar

Week	Term 1	Term 2	Term 3
1		Perimeter, Area and Volume	Interest and Depreciation
2	Earning and Managing Money	Perimeter, Area and Volume	Exploring and Describing Data
3	Earning and Managing Money	Classifying and Representing Data	Exploring and Describing Data
4	Earning and Managing Money	Classifying and Representing Data	Exploring and Describing Data
5	Formulae and Equations	Classifying and Representing Data	Working With Time
6	Formulae and Equations	Focus Week – Task 2	Working With Time
7	Measurement and Energy	Linear Relationships	Working With Time
8	Measurement and Energy	Linear Relationships	Review
9	Task 1 Measurement and Energy	Linear Relationships	Task 3 - End of Course Exam
10	Relative Frequency and Probability	Interest and Depreciation	Task 3 - End of Course Exam
11	Perimeter, Area and Volume		

Modern History

	TASK 1	TASK 2	TASK 3	
Name of task	The Romanovs	Historical Investigation	End of Course Examination	
Type of task	Source Analysis	Independent Research Project	Examination	
Date of task	Term 1 Week 10	Term 2 Week 6	Term 3 Weeks 9 - 10	
Outcomes assessed	MH11-1 MH11-4 MH11-6 MH11-7 MH11-9	MH11-2 MH11-3 MH11-5 MH11-6 MH11-8 MH11-9	MH11-1 MH11-2 MH11-3 MH11-4 MH11-5 MH11-6 MH11-5 MH11-9 MH11-10	
Component				Weighting
Knowledge and understanding of course content	10		30	40
Historical skills in the analysis and evaluation of sources and interpretations	10	5	5	20
Historical inquiry and research	5	15		20
Communication of historical understanding in appropriate forms	5	10	5	20
Total %	30	30	40	100

Calendar

Week	Term 1	Term 2	Term 3
1		Historical Investigation	World War I
2	Investigating Modern History: Construction of Modern Histories	Historical Investigation	World War I
3	Investigating Modern History: Construction of Modern Histories	Historical Investigation	World War I
4	Investigating Modern History: Construction of Modern Histories	Historical Investigation	World War I
5	Case Study: Romanovs	Historical Investigation	World War I
6	Case Study: Romanovs	Focus Week: Task 2	World War I
7	Case Study: Romanovs	Case Study: South Africa	World War I
8	Case Study: Romanovs	Case Study: South Africa	World War I
9	Case Study: Romanovs	Case Study: South Africa	Task 3 - End of Course Exam
10	Task 1	Case Study: South Africa	Task 3 - End of Course Exam
11	Historical Investigation		

Music 1

	TASK 1	TASK 2	TASK 3	
Name of task	Musicology	Formulating Musical Ideas	Music of Another Time	
Type of task	Viva Voce and student devised Aural Analysis	Performance and Viva Voce	Composition Portfolio and Aural Analysis	
Date of task	Term 1 Week 9	Term 2 Week 7	Term 3 Week 8	
Outcomes assessed	P2, P4, P5, P6, P8	P3, P2, P5, P6, P8	P3, P4, P6, P7, P8	
Component				Weighting
Performance		25		25
Composition			25	25
Musicology	10	15		25
Aural	10		15	25
Total %	20	40	40	100

Calendar

Week	Term 1	Term 2	Term 3
1		Performance	Composition
2	Aural Analysis	Performance	Composition
3	Aural Analysis	Performance	Composition
4	Aural Analysis	Performance	Composition
5	Aural Analysis	Performance	Composition
6	Aural Analysis	Focus Week	Composition
7	Aural Analysis	Task 2	Composition
8	Aural Analysis	Composition	Task 3
9	Task 1	Composition	End of Course Examinations
10	Composition	Composition	End of Course Examinations
11	Composition		

PD/Health/PE

	TASK 1	TASK 2	TASK 3	
Name of task	<i>Analysing Health Behaviours & Outcomes</i>	<i>Investigating Movement Potential</i>	<i>End of Course Examination</i>	
Type of task	Case Study	Research task	Examination	
Date of task	Term 1 Week 10	Term 2 Week 9	Term 3 Weeks 9 - 10	
Outcomes assessed	P1, P2, P3, P6, P15	P7, P8, P16, P17	P1, P2, P4, P5, P6, P7, P8, P10, P11, P12	
Component				Weighting
Course content	10	15	15	40
Skills in critical thinking, research, analysis and communication	25	20	15	60
Total %	35	35	30	100

Calendar

Week	Term 1	Term 2	Term 3
1		Core 2: The Body in Motion	Option: First Aid
2	Core 1: Better Health for Individuals	Core 2: The Body in Motion	Option: First Aid
3	Core 1: Better Health for Individuals	Core 2: The Body in Motion	Option: First Aid
4	Core 1: Better Health for Individuals - <i>Issue Task 1</i>	Core 2: The Body in Motion	Option: First Aid
5	Core 1: Better Health for Individuals	Core 2: The Body in Motion	Option: Fitness Choices
6	Core 1: Better Health for Individuals	Focus Week	Option: Fitness Choices
7	Core 1: Better Health for Individuals	Core 2: The Body in Motion	Option: Fitness Choices
8	Core 1: Better Health for Individuals	Core 2: The Body in Motion	Option: Fitness Choices
9	Core 1: Better Health for Individuals	Task 2	Task 3 - End of Course Exam
10	Task 1	Core 2: The Body in Motion	Task 3 - End of Course Exam
11	Core 2: The Body in Motion		

Photography

	TASK 1	TASK 2	TASK 3	
Name of task	Traditions and Conventions of Analogue Photography	Developing a Point of View	Examination & Portfolio Submission	
Type of task	Submitted images showcasing the Practice of creating images in wet photography: artmaking, design, compositional & darkroom tasks with a related historical research	Submission of practical analogue images which showcase camera & darkroom techniques, also highlighting compositional awareness in wet photography	Curation and submission of the personal portfolio of wet photographic images & related examination review of aspects of course content	
Date of task	Term 1 Week 10	Term 2 Week 10	Term 3 Week 8	
Outcomes assessed	M1, M3, M4, M5, M6, CH1, CH2, CH3, CH4, CH5	M1, M2, M3, M4, M5	M1, M2, M3, M4, M5, CH1, CH2, CH3, CH4, CH5	
Component				Weighting
Artmaking	20	30	20	70
Study of Photography	10		20	30
Total %	30	30	40	100

Calendar

Week	Term 1	Term 2	Term 3
1		Developing a Point of View	Introduction to Still Life & The Photo Essay
2	Traditions and Conventions of Analogue Photography	Introduction to 35mm film & the SLR camera	Still Life camera techniques & The Photo Essay
3	Design, collage & composition. 19/20 th Century artists & photographers	Introduction to 35mm film & the SLR camera. Creative analogue images	Field Trip – Sydney Photo Essay. Still life, Film/Print Processing & the darkroom
4	Design, collage & composition	Creative analogue images	Still life lighting, Film/Print Processing & the darkroom
5	Design, collage & composition	Creative analogue images. Film Processing & the darkroom	Still life, Film/Print Processing & the darkroom
6	The Darkroom. Non camera/film techniques	Focus Week	Print Processing, editing & the darkroom
7	The Darkroom. Non camera/film techniques	The Enlarger, darkroom printing techniques	Print Processing, editing & the darkroom
8	Design, collage & composition, The Darkroom, pinhole camera	Film & Print Processing & the darkroom & editing	Task 3 - Portfolio Review & Course content revision
9	Design, collage & composition, The Darkroom, pinhole camera	Film & Print Processing & the darkroom & editing	End of Course Examinations
10	Task 1	Task 2	End of Course Examinations
11	Developing a Point of View		

Physics

	TASK 1	TASK 2	TASK 3	
Name of task	Depth Study	Module Review	End of Course Examination	
Type of task	Secondary Research Practical Investigation In-Class Quiz	Modules 1 & 2 Review Data Analysis & Scientifics Skills	Examination	
Date of task	Term 1 Week 10	Term 2 Week 6	Term 3 Weeks 9 - 10	
Outcomes assessed	PH11/12-1, PH11/12-3, PH11/12-4, PH11/12-5, PH11/12-7, PH11-8	PH11/12-2, PH11/12-6, PH11-7, PH11-8, PH11-9	PH11/12-4, PH11/12-6, PH11-8, PH11-9, PH11-10, PH11-11	
Component				Weighting
Skills in Working Scientifically	20	20	20	60
Knowledge and Understanding	10	10	20	40
Total %	30	30	40	100

Calendar

Week	Term 1	Term 2	Term 3
1		Momentum, Energy and Simple Systems	Electric Circuit
2	Module 1: Kinematics Scientific Methods	Momentum, Energy and Simple Systems	Electric Circuit Magnetism
3	Motion in a Straight Line Introduce Depth Study	Momentum, Energy and Simple Systems - Module 2 Quiz	Magnetism
4	Motion in a Straight Line Introduce Depth Study	Module 3: Waves and Thermodynamics Wave Properties	Magnetism
5	Motion on a plane Work on Depth Study	Wave behaviour	Magnetism
6	Motion on a Plane Work on Depth Study Module Revision Quiz	Task 2 - Focus Week	Magnetism
7	Module 2: Dynamics Forces Work on Depth Study	Sound Waves Ray Model of Light	Magnetism Module 4 Quiz
8	Forces, Acceleration and Energy Work on Depth Study	Ray Model of Light Thermodynamics Model 3 Quiz	Revision
9	Forces, Acceleration and Energy Work on Depth Study	Module 4: Electricity and Magnetism Electrostatic Forces	Task 3 - End of Course Exam
10	Task 1 – Depth Study due	Electrostatic Forces	Task 3 - End of Course Exam
11	Momentum, Energy and Simple Systems		

Society and Culture

	TASK 1	TASK 2	TASK 3	
Name of task	<i>Social and Cultural World</i>	<i>Mini PIP</i>	<i>End of Course Examination</i>	
Type of task	Multimodal Essay	Report	Examination	
Date of task	Term 1 Week 8	Term 2 Week 9	Term 3 Weeks 9-10	
Outcomes assessed	P1, P3, P7, P9, P10	P2, P4, P5, P6, P8	P1, P3, P5, P9, P10	
Component				Weighting
Knowledge & understanding of course content	10	10	30	50
Application and evaluation of social and cultural research methods	5	20	5	30
Communication of information, ideas and issues in appropriate forms	5	10	5	20
Total %	20	40	40	100

Calendar

Week	Term 1	Term 2	Term 3
1		Personal and Social Identity	Intercultural Communication
2	Social and cultural world	Personal and Social Identity	Intercultural Communication
3	Social and cultural world	Personal and Social Identity	Intercultural Communication
4	Social and cultural world	Personal and Social Identity	Intercultural Communication
5	Social and cultural world	Focus Week	Intercultural Communication
6	Social and cultural world	Personal and Social Identity	Intercultural Communication
7	Social and cultural world	Personal and Social Identity	Intercultural Communication
8	TASK 1	Personal and Social Identity	Intercultural Communication
9	Social and cultural world	TASK 2	Task 3 - End of Course Exam
10	Social and cultural world	Personal and Social Identity	Task 3 - End of Course Exam
11	Social and cultural world		

Software Engineering

	TASK 1	TASK 2	TASK 3	
Name of task	<i>Programming Fundamentals</i>	<i>Games Project</i>	<i>End of Course Examination</i>	
Type of task	Theory/ Practical Test	Project Report/ Practical	Examination	
Date of task	Term 1 Week 8	Term 2 Week 9	Term 3 Weeks 9-10	
Outcomes assessed	SE-11-01, SE-11-02, SE-11-06, SE-11-07	SE-11-01, SE-11-02, SE-11-03, SE-11-06, SE-11-07, SE-11-08, SE-11-09	SE-11-01, SE-11-03, SE-11-04, SE-11-05, SE-11-06, SE-11-08	
Component				Weighting
Knowledge & understanding of course content	10	10	30	50
Knowledge & Skills in the practical application of the content	15	25	10	50
Total %	25	35	40	100

Calendar

Week	Term 1	Term 2	Term 3
1		The Object-Oriented Program	Program Mechatronics
2	Programming Fundamentals	The Object-Oriented Program	Program Mechatronics
3	Programming Fundamentals	The Object-Oriented Program	Program Mechatronics
4	Programming Fundamentals	The Object-Oriented Program	Program Mechatronics
5	Programming Fundamentals	The Object-Oriented Program	Program Mechatronics
6	Programming Fundamentals	Focus Week	Program Mechatronics
7	Programming Fundamentals	The Object-Oriented Program	Program Mechatronics
8	Programming Fundamentals	The Object-Oriented Program	Revision
9	TASK 1	TASK 2	Task 3 - End of Course Exam
10	Programming Fundamentals	The Object-Oriented Program	Task 3 - End of Course Exam
11	Programming Fundamentals		

Sport, Lifestyle and Recreation

	TASK 1	TASK 2	TASK 3	
Name of task	<i>Healthy Lifestyle</i>	<i>Coaching</i>	<i>Investigating Fitness</i>	
Type of task	Topic test and practical assessment.	Training session design and implementation.	Research: Brochure and Pamphlet.	
Date of task	Term 1 Week 10	Term 2 Weeks 9 & 10	Term 3 Week 7	
Outcomes assessed	1.2, 2.3, 3.1, 4.4, 5.2	1.1, 1.3, 3.2, 4.2	2.2, 3.3, 4.1, 5.5	
Component				Weighting
Knowledge and understanding outcomes and course content	20	10	20	50
Skills outcomes and content	20	10	20	50
Total %	40	20	40	100

Calendar

Week	Term 1	Term 2	Term 3
1		Sports Coaching	Fitness
2	Healthy Lifestyle	Sports Coaching	Fitness
3	Healthy Lifestyle	Sports Coaching	Fitness
4	Healthy Lifestyle	Sports Coaching	Fitness
5	Healthy Lifestyle	Sports Coaching	Fitness
6	Healthy Lifestyle	Focus Week	Fitness
7	Healthy Lifestyle	Sports Coaching	Task 3
8	Healthy Lifestyle	Sports Coaching	Fitness
9	Healthy Lifestyle	Task 2 (training session design & implementation)	End of Course Examinations
10	Task 1 (topic test & practical assessment)	Task 2 (training session design & implementation)	End of Course Examinations
11	Healthy Lifestyle		

Textiles and Design

	TASK 1	TASK 2	TASK 3	
Name of task	<i>Project 1</i>	<i>Project 2</i>	<i>End of Course Examination</i>	
Type of task	Portfolio Supporting Documentation	Practical Textile Item	Examination	
Date of task	Term 1 Week 9	Term 2 Week 9	Term 3 Weeks 9 - 10	
Outcomes assessed	P1.2, P2.1, P2.3, P3.1, P3.2, P4.1	P2.2, P2.3	P1.1, P1.2, P3.1, P3.2, P5.1, P5.2, P6.1	
Component				Weighting
Knowledge and understanding of course content	20		30	50
Skills and knowledge in the design, manufacture and management of textiles projects	10	40		50
Total %	30	40	30	100

Calendar

Week	Term 1	Term 2	Term 3
1		Properties and Performance of Textiles / Design	Properties and Performance of Textiles Design
2	Introduction to Textiles and Design	Properties and Performance of Textiles / Design	Properties and Performance of Textiles Design
3	Properties and Performance of Textiles	Properties and Performance of Textiles / Design	Australian Textile, Clothing, Footwear and Allied Industries (ATCFAI)
4	Properties and Performance of Textiles	Properties and Performance of Textiles / Design	Australian Textile, Clothing, Footwear and Allied Industries (ATCFAI)
5	Properties and Performance of Textiles	Properties and Performance of Textiles / Design	Australian Textile, Clothing, Footwear and Allied Industries (ATCFAI)
6	Properties and Performance of Textiles	Focus Week	Australian Textile, Clothing, Footwear and Allied Industries (ATCFAI)
7	Properties and Performance of Textiles / Design	Properties and Performance of Textiles / Design	Revision
8	Properties and Performance of Textiles / Design	Properties and Performance of Textiles / Design	Revision
9	Properties and Performance of Textiles / Design Task Project 1 Portfolio Supporting Documentation 30%	Design Task Project 2 Practical Textile Item 40%	Task 3 - End of Course Exam
10	Properties and Performance of Textiles / Design	Design	Task 3 - End of Course Exam
11	Properties and Performance of Textiles / Design		

Visual Arts

	TASK 1	TASK 2	TASK 3	
Name of task	Exploring Representation	Investigating Contemporary Art making Practice	Developing Practice & Submitted Artwork	
Type of task	Submission of curated artworks that explore representations of the body. VAPD includes a related annotated representation of a selected body part over time.	<i>Visual investigation of The Object in Modern & Contemporary Art. VAPD to show an account of how forms and subject matter have been used to represent a significant transformation of ideas.</i>	<i>Based on the art gallery experience & referencing the Conceptual Framework, complete a portrait with an extended written response explaining the relationships generated within the Conceptual Framework.</i>	
Date of task	Term 1 Week 10	Term 2 Week 9	Term 3 Week 8	
Outcomes assessed	P1, P2, P4, P5, P6	P1, P3, P4, P5, P7, P9, P10	P1, P2, P3, P4, P5, P6, P7, P8,	
Component				Weighting
Art making	20	10	20	50
Critical & Historical Study		30	20	50
Total %	20	40	40	100

Calendar

Week	Term 1	Term 2	Term 3
1		The Object in Art	The Portrait – developing art practice
2	Exploring Representation; The figurative image	Introduction to Modernity to Post Modernism	The Archibald Prize & Portraiture conventions
3	Representation of the human form; history & practice	The Object in Art, Contemporary practice	The Portrait; historical & contemporary practice
4	Figurative Themes & Study	The Object in Art, contemporary practice	The Archibald Prize excursion TBC
5	Figurative Themes & Study	The Object in Art, The Frames	The Portrait, Conceptual Framework
6	Art Express excursion	Focus Week	The Portrait, Conceptual Framework
7	Figurative Themes & Study	The Object in Art, The Frames	The Portrait
8	Figurative Themes & Study	The Object in Art	Task 3 submission
9	Figurative Themes & Study	Task 2 submission	End of Course Examinations
10	Task 1 submission	Evaluation & feedback	End of Course Examinations
11	Evaluation & feedback		

Visual Design

	TASK 1	TASK 2	TASK 3	
Name of task	Introduction to design	Publications & Posters	Fanzines & Folio	
Type of task	Tutorials & submission of completed Photoshop images	Submission of studio design images & related study response showcasing an awareness of software capabilities	Curation of the Personal Research project & portfolio review	
Date of task	Term 1 Week 10	Term 2 Week 9	Term 3 Week 8	
Outcomes assessed	DM1, DM2, DM3, DM4, CH1, CH2	DM1, DM2, DM3, DM4, DM5, DM6, CH1, CH2, CH3, CH4	DM1, DM2, DM3, DM4, DM5, DM6, CH1, CH2, CH3, CH4	
Component				Weighting
Knowledge, skills & understanding through the making of works in design that lead to & demonstrate conceptual & technical accomplishment.	20	20	30	70
Knowledge, skills & understanding that lead to increasingly accomplished critical & historical investigations of design.		20	10	30
Total %	20	40	40	100

Calendar

Week	Term 1	Term 2	Term 3
1		Publications & Posters	Packaging & Publications
2	Introduction to Design	Lettering & typography	Alternative Packaging Study
3	Intro to Photoshop & Lesson 1	Type as a Design element	Packaging Prototypes & Research
4	Photoshop Lesson 2 & Design Study 1	Hardcopy Zine	Project development
5	Photoshop Lesson 3	Photoshop Zine & Design Study 2 & 3	Project development & refinement
6	Photoshop Lesson 4	Focus Week	Project development & refinement
7	Photoshop Lessons 5 & 6	InDesign Publications	InDesign Publications
8	Photoshop Lesson 7	InDesign Publications	Task 3: Packaging & Publications submission
9	Photoshop completion	Task 2: Publications & Posters submission	End of Course Examinations
10	Task 1: Tutorial design/folio Works submission	Evaluation, feedback & review	End of Course Examinations
11	Evaluation, feedback & review		

Work Studies

	TASK 1	TASK 2	TASK 3	
Name of task	<i>My Working Life</i>	<i>Workplace Issues</i>	<i>Team and Enterprise Skills</i>	
Type of task	Research	Written Report	Project	
Date of task	Term 1 Week 8	Term 2 Week 10	Term 3 Week 8	
Outcomes assessed	P1, P2, P3, P4, P9	P3, P7, P8,	P4, P5, P6, P7	
Component				Weighting
Knowledge and understanding	10	10	10	30
Skills	20	20	30	70
Total %	30	30	40	100

Calendar

Week	Term 1	Term 2	Term 3
1		In the Workplace	Teamwork & Team Enterprise Project
2	Core : My Working Life	In the Workplace	Teamwork & Team Enterprise Project
3	Core : My Working Life	In the Workplace	Teamwork & Team Enterprise Project
4	Core : My Working Life	Workplace Issues	Teamwork & Team Enterprise Project
5	Core : My Working Life	Focus Week	Teamwork & Team Enterprise Project
6	Core : My Working Life	Workplace Issues	Teamwork & Team Enterprise Project
7	Core : My Working Life	Workplace Issues	Teamwork & Team Enterprise Project
8	Task 1	Workplace Issues	Task 3
9	Core : My Working Life	Workplace Issues	End of Course Examinations
10	In the Workplace	Task 2	End of Course Examinations
11	In the Workplace		