



WYNDHAM COLLEGE

HSC ASSESSMENT HANDBOOK 2024



Table of Contents

COURSE GUIDE AND ASSESSMENT POLICY

A.	Eligibility for the Award of an HSC	2+
1.	Study of an Appropriate Pattern of Study	2
2.	Complete Courses Satisfactorily	2
B.	Assessment Guidelines	2
1.	General	2
2.	Notification of Tasks	3
3.	VET Mandatory Work Placement	3
4.	Completion of Tasks	3
5.	School Assessments under Examination Conditions	4
6.	Procedures and Code of Conduct	4
7.	Appeals and Reviews	5
8.	Malpractice	5
9.	Non-Serious Attempt	6
10.	"N" Determinations	6
11.	Warnings	6
	Sample Warning Letter	7
	Student Appeal Form Illness / Misadventure	9
	Procedures to Follow if Assessment Tasks are Missed	10

HSC SUBJECT ASSESSMENT SCHEDULES

Aboriginal Studies	13
Ancient History	14
Biology	15
Business Studies	16
Chemistry	17
Community and Family Studies	18
Dance	19
Design and Technology	20
Drama	21
Economics	22
Engineering Studies	23
English Advanced	24
English Standard	25
English as an Additional Language or Dialect	26
English Extension 1	27
English Extension 2	28
English Studies	29
Exploring Early Childhood	30
Film, Video & Digital Imaging	31
Food Technology	32
History Extension	33
Industrial Technology – Multimedia Technologies	34
Industrial Technology – Timber Products and Furniture Technologies	35
Information, Processes and Technology	36
Investigating Science	37
Japanese Beginners	38
Legal Studies	39
Marine Studies	40
Mathematics Advanced	41
Mathematics Extension 1	42
Mathematics Extension 2	43
Mathematics Standard 2	44
Mathematics Standard 1	45
Modern History	46
Music 1	47
Personal Development, Health and Physical Education	48
Photography	49
Physics	50
Science Extension	51
Society and Culture	52
Software, Design and Development	53
Sport Lifestyle and Recreation	54
Textiles and Design	55
Visual Arts	56
Visual Design	57
Work Studies	58

HSC Courses, Vocational Courses and Endorsed Course Guide and Assessment Policy

COURSE GUIDE AND ASSESSMENT POLICY

A. ELIGIBILITY FOR THE AWARD OF AN HSC

1. Study Of An Appropriate Pattern Of Study

To qualify for the Higher School Certificate students must satisfactorily complete an HSC pattern of study comprising at least 10 units, following on from the Preliminary pattern of study. Both patterns must include:

- at least six units from NESA Developed courses;
- at least two units of a NESA Developed course in English;
- at least three courses of two units value or greater (either NESA Developed or Endorsed courses);
- at least four subjects

To satisfy pattern of study requirements for the Higher School Certificate, a student may count a maximum of six Preliminary units and six HSC units from courses in Science.

2. Complete Courses Satisfactorily

A student will be considered to have satisfactorily completed a course if, in the Principal's view, there is sufficient evidence the student has:

- (a) followed the course developed or endorsed by the Authority
- (b) applied themselves with diligence and sustained effort to the set tasks and experiences provided in the course by the school
- (c) achieved some or all of the course outcomes
- (d) made a genuine attempt to complete course requirements
- (e) in addition to any other set tasks and experiences in any course, completed assessment tasks that contribute in excess of 50 percent of available marks.
- (f) sat for and made a genuine attempt at examinations

It should be noted that, as a result of absence from a course, the principal may determine that course completion criteria may not be met.

Students whose attendance is called into question will be required to prove to the principal's satisfaction, following a review of their performance, that they are meeting the course completion criteria.

B. ASSESSMENT GUIDELINES

1. General

Assessment tasks indicate achievement over a wide range of syllabus outcomes. Students will receive the following advice about assessment in each course before assessment begins.

- (a) the practical and written tasks, such as tests, assignments and projects, on which their assessments are to be based.
- (b) the weighting to be allocated to each task.
- (c) an indication as to when the task will be held.

2. Notification Of Tasks

In addition to the schedule of assessment tasks, the college will provide adequate notice of the precise timing of each assessment task. Generally, at least two weeks' notice of the details of a task will be given and any change to the task that may occur.

NB If a student is absent from school for a day or a session it is the student's responsibility to check if any information relating to an Assessment Task has been communicated.

3. VET Mandatory Work Placement

As with all other courses, students undertaking VET courses may be deemed to have either completed or not completed course requirements. It should be noted that if a student fails to undertake any mandatory work placement component it may be determined that the student has not made a genuine attempt to complete course requirements. In this case the principal can indicate that the course has not been satisfactorily completed and the student may be issued with an "N" determination.

4. Completion Of Tasks

NESA hopes that, through the process of continuing assessment, it will be able to reward sustained effort on the part of senior students and sample a wider (and, therefore, more accurate) range of student attainments. A sound performance in assessment tasks over the Preliminary course also helps to prepare students for the actual HSC which will modify their school assessment. It should be realised that the assessment program places a responsibility upon students to complete the assessment tasks. At Wyndham College the following policies towards missed tasks have been determined.

- i. Students who **complete** all aspects of the assessment task and **submit it** on or **before** the due date are eligible for the full mark allocated for the task.
- ii. Students who **attend** an assessment task which is to be completed at school are eligible for the full mark allocated for the task.
- iii. Students who **fail to submit** an assessment task by the due date **must be given zero** if they have no valid reason.
- iv. Students who **fail to attend** on the specified date an assessment task which is to be completed at school **must be given zero** if they have no valid reason.
- v. Students who fail to submit an assessment task by the due date, but who have a valid reason (such as sickness or approved leave validated by appropriate documentation) are eligible for the full mark allocated to the task if they have completed the task. A medical certificate may not be accepted as excusing late submission of tasks **where the task was issued well in advance of the illness** and the medical certificate shows that the student was not incapacitated for a large part of that time. You should submit whatever progress work has been completed at that time e.g. drafts, plans, rough work etc. This will be assessed by the teacher and may be awarded marks. PLEASE NOTE: YOU MUST SUBMIT THE TASK ON THE DAY YOU RETURN TO SCHOOL.
- vi. Students who **fail to attend** an assessment task which is to be completed at school, but who **have a valid reason** (e.g. sickness) must be given an opportunity to do the task or an equivalent task at a later date. In exceptional circumstances it may be necessary to give a mark based on the student's other assessment tasks. These students are eligible for the **full mark** allocated to the task.
- vii. Students who **submit** an **incomplete** task on or before the due date are to be allocated a mark. This mark is to be based on the proportion of the task completed. The task does **not** automatically receive a zero mark. As an example, if the task had six equally weighted components and a student attempted only three of these, that student would be eligible for up to 50% of the mark allocated to the task.

- viii. If a student believes factors beyond their control, e.g. sickness or family misfortune, have affected their ability to do their best on a task they may apply for an extension by seeing the appropriate Head Teacher at least 24 hours before the due date. NO EXTENSION WILL BE GRANTED TO APPLICATIONS RECEIVED ON THE DAY A TASK IS DUE.
- ix. If a student submits a task which is deemed to be a non-serious attempt by the teacher, then a zero mark will be awarded.
- x. During examination sessions, any portable electronic devices, including iPods, are not permitted and only NESAs approved equipment, such as calculators, may be used.
- xi. Hard copies (not computer files) of written task responses are to be submitted unless the task stipulates otherwise. It is the student's responsibility to have work printed in time for submission.
- xii. Printing of major works can be organised through the school provided it is submitted one week before the due date.
- xiii. Computer / Printer failure cannot be used as a reason to submit work late.

Where a student is going to be absent, the student or parent/guardian should contact the Head Teacher or class teacher if possible, before the task takes place. If unexpectedly absent on the day of the task the student should phone the school and inform the Deputy Principal, or the Head Teacher of the subject. Workplacement is not a valid reason to submit work late. All students on Workplacement must make arrangements to submit the work by the due date.

5. School Assessments under Examination Conditions

In school assessments are often carried out under examination conditions. Wyndham College uses examination procedures modelled on those used for NESAs external examinations. The majority of students meet expectations. Students need to be aware of the examination Procedures and Code of Conduct. They ensure the smooth running of examinations and an environment in which all students are able to respond to the best of their ability without disruption from others.

6. Procedures and Code of Conduct

- Wear school uniform. This assists the supervisor identify you as a student of this campus.
- Bring all necessary equipment in a CLEAR ZIP LOCK BAG or CLEAR PENCIL CASE. Black pens, pencil, pencil sharpener, eraser, highlighter and ruler marked in mms and cms are allowed in ALL examinations.
- For examinations requiring a calculator, use only a [NESAs approved calculator](#). Make sure it is fully charged.
- You may bring a clear bottle of water into the examination; you cannot leave to refill it.
- Supervisors have the right to inspect any equipment you bring into the examination room.
- Arrive at the exam room 20 minutes before examination start time. It can take some time to find your seat. A seating map will be placed on the outside of the HALL to help you.
- Organise your transport to be on time for examinations.
- If you arrive late, entry into the examination will be at the supervisors' discretion.
- Sit at your allocated desk. Do not swap name place cards.
- Remove your watch and place it in clear view on the desk in front of you. It cannot be a programmable watch.
- When instructed, thoroughly check your examination paper – it is possible that pages are missing or there has been an error in the printing.
- Reading time is for reading only. NO writing or highlighting may be undertaken during reading time.
- Read instructions carefully, noting requirements for the use of answer booklets.
- Supervisors are NOT able to interpret questions.
- Write your name or NESAs number, as instructed by the supervisor, on every page of your answer booklet.

- Write in black or blue pen, preferably black.
- Stop writing immediately you are instructed to do so.
- Arrange completed answers according to supervisor's instructions.
- Do not remove examination papers from the examination room.
- Only leave the examination room when the supervisor says it is OK to do so. Leave immediately, when instructed to do so.
- If you are ill or a problem exists during the examination notify the supervisor immediately, by quietly raising your hand.

Students must NOT:

- Borrow equipment.
- Take mobile phones or programmable watches or other electronic devices into the examination room.
- Speak or communicate to anyone other than a supervisor during the examination. Behave in a manner that is likely to disturb or disrupt other students.
- Smoke, eat or come to examinations under the influence of alcohol or illegal drugs.
- Try to cheat or participate in any form of malpractice. Cheating or malpractice may result in zero marks being awarded and an 'N' determination issued.

If a student breaches the conduct of code during the examination, the school will use a Yellow/Red Card notification system. Students will receive one official warning - a Yellow Card placed on their desk. Should the behaviour continue the student will be removed from the examination venue (Red Card) and sent to the Deputy Principal. This will result in disciplinary action.

Yellow Card: THIS IS A WARNING. You have been observed breaking the code of conduct. DO NOT ATTEMPT TO DISCUSS THIS NOW. The next step will be a Red Card and removal.

Red Card: You have been observed breaking the code of conduct. You are to leave the examination room IMMEDIATELY without disrupting others. Please report immediately to the Deputy Principal.

If you are ill or have a major problem on the morning of the examination:

- Notify your Year Deputy or the front office (9208 7100)) as soon as possible, and submit an
- Illness/misadventure application as soon as you return to school.
- Note: Illness/misadventure appeals require a Medical Certificate or relevant official misadventure paperwork.
- Rescheduled examinations must be completed DURING the examination period unless there are extenuating circumstances.

7. Appeals and Reviews

Where students are dissatisfied with any aspect of the assessment procedure, they should in the first instance approach the Head Teacher of the subject concerned. If the problem cannot be resolved at the faculty level, it may be referred to the Assessment Review Committee (Principal, Deputy of the Year not concerned and the Head Teacher Secondary Studies), who will convene to consider the particular case. Queries about the marks awarded for a task CAN ONLY be considered if made when the task is handed back to the class.

8. Malpractice

Students who cheat in any way, including plagiarism, make a non-serious attempt, or truant for an assessment task will score zero for the task. In addition, the task will be recorded as a non-attempt in terms of the requirement that students complete tasks which must total more than 50% of available marks. Note: **Cheating occurs when a student attempts to gain an unfair advantage.** The Principal will make all such judgements in consultation with the Review Committee. Plagiarism is the submitting of work that is not wholly your own, e.g. submitting slabs of text from the internet or a textbook.

9. Non-Serious Attempt

Students studying a Preliminary course must make a genuine attempt to complete course requirements. It is a matter for the teacher's professional judgment to determine whether a student has made a genuine attempt to complete these requirements.

Students who do not make a genuine attempt **must be given zero** and will be required to complete a substitute task.

In the case of competency-based courses, where a student has not successfully completed any units of competency, it is a matter for the teacher's professional judgment to determine whether the attempts made by the student to complete the course are genuine.

Where students are studying a Preliminary course that includes a requisite examination, students must sit for and make a genuine attempt at the examination. If it is determined that a student has not made a genuine attempt to complete course requirements, the principal must indicate on the appropriate documentation that the course has not been satisfactorily completed.

10. "N" Determinations

NESA has delegated to principals the authority to determine if students seeking the award of the Higher School Certificate at their school have satisfactorily completed each Developed and / or Endorsed Course in which they are enrolled in accordance with the requirements issued by NESA.

Principals therefore will determine if there is sufficient evidence that each student has applied themselves with diligence and sustained effort to the set tasks and experiences provided in the course by the school.

Principals may determine an appropriate attendance pattern(s) that will allow each student to achieve the outcomes of each course being studied. **Principals may determine that, as a result of absence, the course completion criteria may not be met.** Clearly, absences will be regarded seriously by principals who will give students early warning of the consequences of such absences. Warning letters will relate the student's absence to the non-completion of course requirements.

11. Warnings

If at any time it appears that a student is at risk of being given an "N" (No completion of course requirements) determination in any course, including VET courses, the principal will warn the student as soon as possible and advise the parent or guardian (if the student is under 18 years of age) in writing. This warning will be given in time for the problem to be corrected and will provide advice about the possible consequences of an "N" determination in a course on Higher School Certificate eligibility.

Students who have not complied with the requirements for satisfactory completion of a course at the time of finalising assessments cannot be regarded as having satisfactorily completed the course.



WYNDHAM COLLEGE

Nirimba Education Precinct
Eastern Road
QUAKERS HILL NSW 2763

PHONE: 02 9208 7100

NON-COMPLETION OF A HIGHER SCHOOL CERTIFICATE COURSE OFFICIAL WARNING

Student's name:

Date:

Dear

I am writing to advise that your son / daughter is in danger of not meeting the course completion criteria for the Higher School Certificate course.

The Board of Studies requires schools to issue students with official warnings in order to give them the opportunity to redeem themselves. Please regard this letter as the first official warning we have issued concerning the above course/task. A minimum of two course specific warnings must be issued prior to a final 'N' determination being made for a course.

Course Completion Criteria

Where it is determined that a student has not met the Course Completion Criteria, they place themselves at risk of receiving an 'N' (non-completion of course) determination. An 'N' determination will mean that the course will not be listed on the student's Record of Achievement. In Year 12 students must make a genuine attempt at assessment tasks that contribute in excess of 50% of available marks. Completion of tasks worth exactly 50% is not sufficient; tasks worth in excess of 50% must be completed.

The satisfactory completion of a course requires principals to have sufficient evidence that the student has met the following criteria.

- a) Followed the course developed or endorsed by the Board.
- b) Applied themselves with diligence and sustained effort to the set tasks and experiences provided in the course by the school.
- c) Achieved some or all of the outcomes.

To date, your son / daughter has not satisfactorily met (a), (b) or (c) of the course completion criteria.

The following table lists those tasks, requirements or outcomes not yet completed or achieved, and/or for which a genuine attempt has not been made. In order for your son / daughter to satisfy the course completion criteria, the following tasks, requirements or outcomes need to be satisfactorily completed/achieved.

<i>Task name Course requirement Course outcome</i>	<i>Date task initially due (if applicable)</i>	<i>Action required by student</i>	<i>Date to be completed by (if applicable)</i>

Task Description:
assessment.

This task is worth

% of the total course

Please discuss this matter with your
or clarification is needed.

and contact the school if further information

_____	_____	_____
Class Teacher	Head Teacher	Deputy Principal

Please detach this section and return to the school

**REQUIREMENTS FOR THE SATISFACTORY COMPLETION OF A
HIGHER SCHOOL CERTIFICATE COURSE**

Student's name:

Course:

Date:

I have received the letter indicating that my son / daughter is in danger of not having satisfactorily completed the course listed above.

I am aware that this course may not appear on his / her Record of Achievement.

I am also aware that the 'N' determination will make my son / daughter ineligible for the award of the Higher School Certificate.

Parent/Caregiver's signature _____ Date _____

Student's signature _____ Date _____



Student Appeal Form – Illness/Misadventure

Please submit to Course Head Teacher

Student First Name Student Family Name

NESA Number Connect Class Year 11 or Year 12 (please circle)

Course Teacher

Task

Task Issue Date / / Task / Exam Due Date / /

Type of Task

- ☐ Assessment Task ☐ Examination (during Exam period) ☐ Presentation/Performance
☐ Work Placement ☐ Other

This Appeal Form is to explain

- ☐ Illness – MUST be accompanied by a Medical Certificate
☐ Misadventure ☐ Other

Reason for Appeal

- ☐ Absent from Assessment Task, or absent when the Assessment Task was due because of illness or exceptional circumstance
☐ Special consideration due to illness, misadventure or exceptional circumstances leading up to an Assessment Task or on the day of the Assessment Task

Explanation in support of Appeal application (completed by student)

.....
.....

Attached Supporting Documentation

- ☐ Medical Certificate from Dr Dated / /
☐ Supporting Letter (e.g. from Parent/Carer etc.)
☐ Other (please specify)

Student Signature **Date** / /

Parent/Carer Signature **Date** / /

Recommendation of KLA Head Teacher

.....

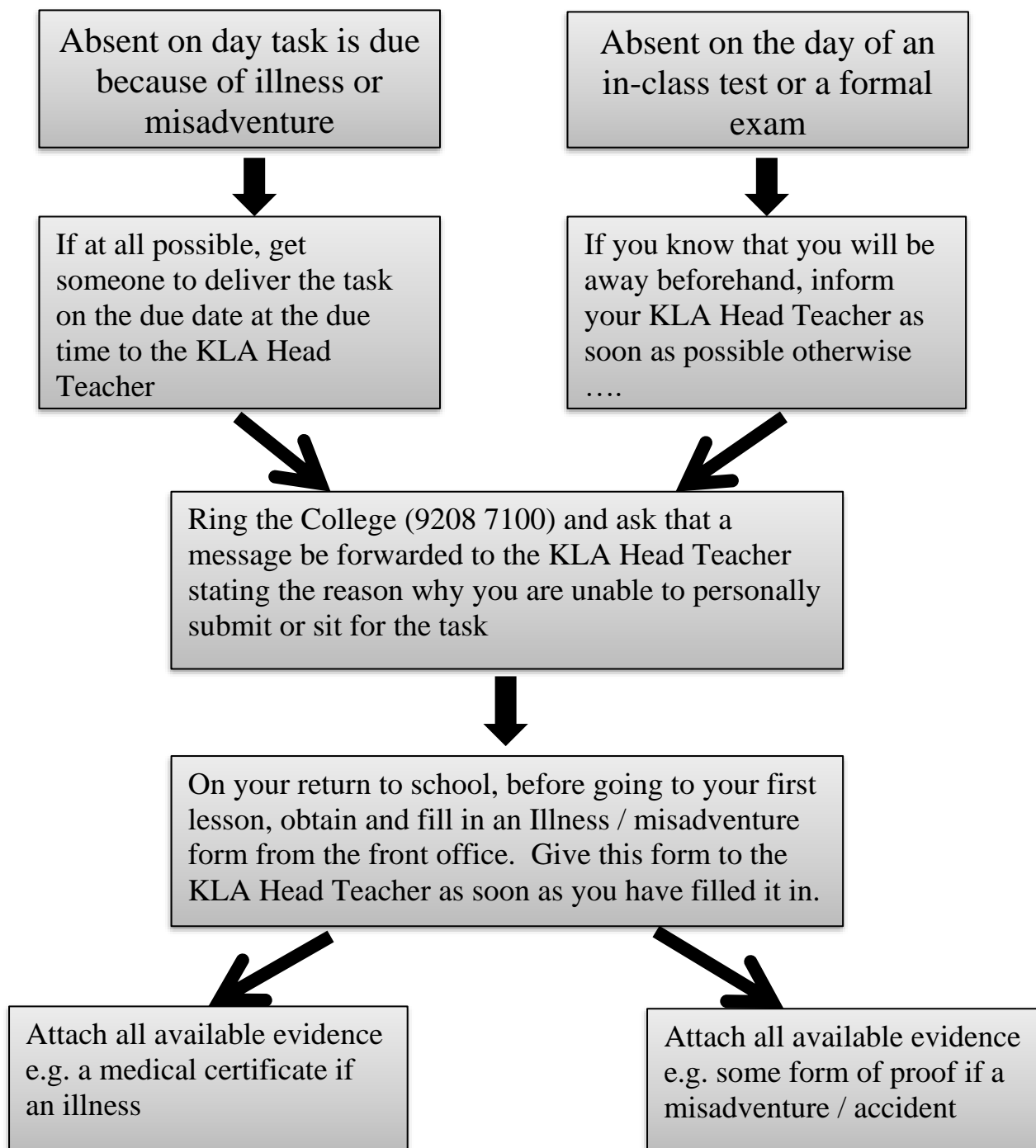
Head Teacher Signature **Date** / /

Upheld **Denied** (please circle)

- Entered by -** ☐ Head Teacher Teaching & Learning
 ☐ Class Teacher - in Sentral (Wellbeing/Data Record/Illness Misadventure Tracking)

Procedures to Follow if Assessment Tasks are Missed

Assessment procedures to follow when:



HSC Assessment Schedules

Aboriginal Studies

	Major Project	TASK 1	TASK 2	TASK 3	
Name of task	MAJOR PROJECT	<i>Social Justice & Human Rights: A Global Perspective</i>	<i>Social Justice & Human Rights: Case Studies</i>	<i>Trial HSC</i>	
Type of task	Research Project	Research & Structured responses	Research & In-class responses	Exam	
Date of task	Term 1 Week 10	Term 2 Week 4	Term 2 Week 10	Term 3 Weeks 2-3	
Outcomes assessed	H4.1, H4.2, H4.3	H1.1, H1.2, H1.3	H3.1, H3.2, H3.3	H1.1, H1.2, H1.3, H2.1, H2.2, H3.1, H3.2, H3.3	
Component					Weighting
Knowledge & understanding of course content.	5	10	5	20	40
Investigating analysis, synthesis & evaluation of information from a variety of sources and perspectives	15		5	5	25
Research & inquiry methods	15			5	20
Communication of information, ideas and issues in appropriate forms	5	5	5		15
Total %	40	15	15	30	100

Major Project includes: three (3) notified submission dates to observe, providing for feedback and verification of progress, as required by NESA Final submission of Project.

Course Calendar (120 Indicative Hours)

Week	Term 4	Term 1	Term 2	Term 3
1	<i>Introduction to HSC</i>	Social Justice and HR, global perspective	Social Justice/ Comparative Study 1	Heritage and Identity or Land
2	Project Research/Inquiry	Social Justice and HR, global perspective	Social Justice/ Comparative Study 1	Trial HSC Exams Task 4 - 30%
3	Project Research/Inquiry	Social Justice and HR, global perspective	Social Justice/ Comparative Study 1	
4	Project Research/Inquiry	Project Research/Inquiry	Task 2 - 15%	Heritage and Identity or Land
5	Project Research/Inquiry	Project Research/Inquiry	Social Justice/ Comparative Study 2	Heritage and Identity or Land
6	Project Research/Inquiry	Project Research/Inquiry	Social Justice/ Comparative Study 2	Heritage and Identity or Land
7	Project Research/Inquiry	Social Justice/ Comparative Study 1	Social Justice/ Comparative Study 2	Heritage and Identity or Land
8	Project Research/Inquiry	Year 12 FOCUS WEEK	Social Justice/ Comparative Study 2	Heritage and Identity or Land
9	Project Research/Inquiry	Social Justice/ Comparative Study 1	Heritage and Identity or Land	Heritage and Identity or Land
10	Project Research/Inquiry	Task 1 - 40%	Task 3 - 15%	Revision
11		Social Justice/ Comparative Study 1		

Ancient History

	TASK 1	TASK 2	TASK 3	TASK 4	
Name of task	Cities of Vesuvius: Pompeii & Herculaneum	Historical Period New Kingdom Egypt	Spartan Society: to the Battle of Leuctra 371 BC	<i>Trial HSC</i>	
Type of task	Source Analysis	Essay	Historical Analysis: Contentious Perspectives	Exam	
Date of task	Term 4 Week 8	Term 1 Week 8	Term 2 Week 8	Term 3 Week 2 & 3	
Outcomes assessed	AH12-6, AH12-7, AH12-8, AH12-9, AH12-10	AH12-1, AH12-2, AH12-3, AH12-5, AH12-9	AH12-3, AH12-4, AH12-6, AH12-7, AH12-8, AH12-9	All outcomes	
Component					Weighting
Knowledge and understanding of the course content	5	10	5	20	40
Historical skills in the analysis and evaluation of sources and interpretations	5		10	5	20
Historical inquiry and research	5	5	10		20
Communication of historical understanding in appropriate forms	5	5	5	5	20
Total %	20	20	30	30	100

Course Calendar (120 Indicative Hours)

Week	Term 4	Term 1	Term 2	Term 3
1	Cities of Vesuvius Survey	Cities of Vesuvius	Hatshepsut	Sparta
2	Cities of Vesuvius	New Kingdom Egypt + Hatshepsut Survey	Hatshepsut	Trial HSC Exams Task 4 30%
3	Cities of Vesuvius	New Kingdom Egypt	Hatshepsut	
4	Cities of Vesuvius	New Kingdom Egypt	Sparta	Sparta
5	Cities of Vesuvius	New Kingdom Egypt	Sparta	Cities of Vesuvius
6	Cities of Vesuvius	New Kingdom Egypt	Sparta	Cities of Vesuvius
7	Cities of Vesuvius	New Kingdom Egypt	Sparta	Revision – New Kingdom Egypt
8	Task 1 – 20%	Year 12 FOCUS WEEK Task 2 – 20%	Task 3 – 30%	Revision – New Kingdom Egypt/ Hatshepsut
9	Cities of Vesuvius	Hatshepsut	Sparta	Revision – Hatshepsut
10	Cities of Vesuvius	Hatshepsut	Sparta	Revision - Sparta
11		Hatshepsut		

Biology

	TASK 1	TASK 2	TASK 3	TASK 4	
Name of task	<i>Depth Study</i>	<i>Module Review</i>	<i>Data Analysis</i>	<i>Trial HSC</i>	
Type of task	Practical & Research	Written Quiz	Data analysis	Exam	
Date of task	Term 4 Week 10	Term 1 Week 8	Term 2 Week 6	Term 3 Week 2 & 3	
Outcomes assessed	BIO11/12-1 BIO11/12-2 BIO11/12-4 BIO11/12-5 BIO11/12-7 BIO12-14	BIO11/12-4 BIO11/12-5 BIO11/12-6 BIO12-12 BIO12-13	BIO11/12-1 BIO11/12-2 BIO11/12-3 BIO11/12-4 BIO12-14 BIO12-15	BIO11/12-5 BIO11/12-7 BIO 12-12 BIO 12-13 BIO 12-14 BIO 12-15	
Component					Weighting
Skills in Working Scientifically	25	10	15	10	60
Knowledge and Understanding	5	10	5	20	40
Total %	30	20	20	30	100

Course Calendar (120 Indicative Hours)

Week	Term 4	Term 1	Term 2	Term 3
1	<i>Introduction to HSC</i>	Module 5 Heredity	Module 6-Genetic Change	Trial Revision
2	Module 7 Infectious Diseases	Module 5 Heredity	Module 6-Genetic Change	Trial HSC Exams Task 4 30%
3	Module 7 Infectious Diseases	Module 5 Heredity	Module 6-Genetic Change	
4	Module 7 Infectious Diseases	Module 5 Heredity	Module 6-Genetic Change	
5	Module 7 Infectious Diseases	Module 5 Heredity	Module 8 Non-infectious Diseases	Module 8 Non-infectious Diseases
6	Module 7 Infectious Diseases	Module 5 Heredity	Task 3 – 20%	HSC Revision
7	Module 7 Infectious Diseases	Module 5 Heredity	Module 8 Non-infectious Diseases	HSC Revision
8	Module 7 Infectious Diseases	Year 12 FOCUS WEEK Task 2 – 20%	Module 8 Non-infectious Diseases	HSC Revision
9	Module 7 Infectious Diseases	Module 6-Genetic Change	Module 8 Non-infectious Diseases	HSC Revision
10	Task 1 – 30% Module 5 Heredity	Module 6-Genetic Change	Module 8 Non-infectious Diseases	HSC Revision
11		Module 6-Genetic Change		

Business Studies

	TASK 1	TASK 2	TASK 3	TASK 4	
Name of task	<i>Operations contemporary business issues and case study research</i>	<i>Marketing: Business report</i>	<i>Finance</i>	<i>Trial HSC</i>	
Type of task	Extended written response	Written response	Topic test: Multiple choice and short answer	Exam	
Date of task	Term 4 Week 9	Term 1 Week 8	Term 2 Week 7	Term 3 Weeks 2-3	
Outcomes assessed	H5, H6, H7	H9, H10	H2, H6, H8	H1, H3, H4, H9	
Component					Weighting
Knowledge & understanding of course content	10	10	5	15	40
Stimulus-based skills		10		10	20
Inquiry and research	10		10		20
Communication of business information, ideas and issues in appropriate forms	5	5	5	5	20
Total %	25	25	20	30	100

Course Calendar (120 Indicative Hours)

Week	Term 4	Term 1	Term 2	Term 3
1	<i>Introduction to HSC</i>	Marketing	Finance	Human Resources
2	Operations	Marketing	Finance	Trial HSC Exams Task 4 30%
3	Operations	Marketing	Finance	
4	Operations	Marketing	Finance	
5	Operations	Marketing	Finance	Human Resources
6	Operations	Marketing	Finance	Human Resources
7	Operations	Marketing	Task 3 - 20% Finance	Human Resources
8	Operations	Year 12 FOCUS WEEK Task 2 25%	Human Resources	Human Resources
9	Task 1 25%	Finance	Human Resources	Human Resources
10	Marketing	Finance	Human Resources	Revision
11		Finance		

Chemistry

	TASK 1	TASK 2	TASK 3	TASK 4	
Name of task	Scientific Skills	Depth Study	Scientific Report	Trial HSC	
Type of task	Research & Practical	Practical & Quiz	First-hand Investigation	Exam	
Date of task	Term 4 Week 9	Term1 Week 8	Term 2 Week 7	Term 3 Week 2 & 3	
Outcomes assessed	CH12-1 CH12-2 CH12-3 CH12-6 CH12-7 CH12-12	CH12-4 CH12-5 CH12-6 CH12-7 CH12-12 CH12-13	CH12-2 CH12-3 CH12-4 CH12-6 CH12-7 CH12-14	CH12-1 CH12-4 CH12-5 CH12-12 CH12-13 CH2-14 CH12-15	
Component					Weighting
Skills in Working Scientifically	15	20	15	10	60
Knowledge and Understanding	5	10	5	20	40
Total %	20	30	20	30	100

Course Calendar (120 Indicative Hours)

Week	Term 4	Term 1	Term 2	Term 3
1	<i>Introduction to HSC</i>	Module 6 Acid/Base Reaction	Module 7 Organic Chemistry	Module 8 Applying Chemical Ideas
2	Module 5 Equilibrium and Acid Reaction	Module 6 Acid/Base Reaction	Module 7 Organic Chemistry	Trial HSC Exams Task 4 30%
3	Module 5 Equilibrium and Acid Reaction	Module 6 Acid/Base Reaction	Module 7 Organic Chemistry	
4	Module 5 Equilibrium and Acid Reaction	Module 6 Acid/Base Reaction	Module 7 Organic Chemistry	
5	Module 5 Equilibrium and Acid Reaction	Module 6 Acid/Base Reaction	Module 7 Organic Chemistry	Module 8 Applying Chemical Ideas
6	Module 5 Equilibrium and Acid Reaction	Module 6 Acid/Base Reaction	Module 7 Organic Chemistry	Module 8 Applying Chemical Ideas
7	Module 5 Equilibrium and Acid Reaction	Module 6 Acid/Base Reaction	Task 3 – 20%	HSC Revision
8	Module 5 Equilibrium and Acid Reaction	Year 12 FOCUS WEEK Task 2 30%	Module 8 Applying Chemical Ideas	HSC Revision
9	Task 1 – 20%	Module 7 Organic Chemistry	Module 8 Applying Chemical Ideas	HSC Revision
10	Module 6 Acid/Base Reaction	Module 7 Organic Chemistry	Module 8 Applying Chemical Ideas	HSC Revision
11		Module 7 Organic Chemistry		

Community and Family Studies

	TASK 1	TASK 2	TASK 3	TASK 4	
Name of task	<i>Independent Research Project</i>	<i>Groups in Context</i>	<i>Parenting and Caring</i>	<i>Trial HSC</i>	
Type of task	Research	Investigation	Case Study	Exam	
Date of task	Term 4 Week 11	Term 1 Week 10	Term 2 Week 8	Term 3 Weeks 2-3	
Outcomes assessed	H4.1, H4.2	H2.2, H3.3, H6.2	H1.2, H2.1, H2.3, H3.2, H5.2	H1.1 to H6.1	
Component					Weighting
Knowledge and understanding of course content	5	10	10	15	40
Skills in critical thinking, research methodology, analysing and communicating	15	10	20	15	60
Total %	20	20	30	30	100

Course Calendar (120 Indicative Hours)

Week	Term 4	Term 1	Term 2	Term 3
1	<i>Introduction to HSC</i>	Groups in Context	Parenting and Caring	Social Impact of Technology
2	Research Methodology	Groups in Context	Parenting and Caring	Trial HSC Exams Task 4 30%
3	Research Methodology	Groups in Context	Parenting and Caring	
4	Research Methodology	Groups in Context	Parenting and Caring	Social Impact of Technology
5	Research Methodology	Groups in Context	Parenting and Caring	Social Impact of Technology
6	Research Methodology	Groups in Context	Parenting and Caring	Social Impact of Technology
7	Research Methodology	Groups in Context	Parenting and Caring	Social Impact of Technology
8	Research Methodology	Year 12 FOCUS WEEK	Task 3 - 30%	Social Impact of Technology
9	Research Methodology	Groups in Context	Social Impact of Technology	Social Impact of Technology
10	Task 1 - 20%	Task 2 - 20%	Social Impact of Technology	Revision
11		Groups in Context		

Dance

	TASK 1	TASK 2	TASK 3	TASK 4	
Name of task	Core Appreciation + Core Performance	Core Composition	Major Study	Trial HSC	
Type of task	Written Task on Terrain (by Frances Rings) Core Performance Dance Interview Journal	Performance of Composition, Journal, Interview/ elaboration	Progress submission of 1. Major Study in Dance/ Film/ Composition 2. Written component and Journal 3. Discussion	Exam	
Date of task	Term 4 Week 10	Term 1 Week 10	Term 2 Week 9	Term 3 (Written) Weeks 2-3 (Practical) Weeks 1-2	
Outcomes assessed	H4.1, H4.2, H4.3, H4.4, H4.5	H2.1,2.2,2.3,2.4 or H3.1, 3.2, 3.3, 3.4 or H4.1, 4.2, 4.3, 4.4	H2.1, 2.2, 2.3, H3.1, 3.2, 3.3	H2.1, 2.2, 2.3, H3.1, 3.2, 3.3, 3.4, H 4.1, 4.2, 4.3, 4.4, 4.5	
Component					Weighting
Performance	10			10	20
Composition		15		5	20
Appreciation	15			5	20
Major Study			30	10	40
Total %	25	15	30	30	100

Course Calendar (120 Indicative Hours)

Week	Term 4	Term 1	Term 2	Term 3
1	<i>Introduction to HSC</i>	Core Composition	Major Study	MajorStudy/Composition/ Performance
2	Core Performance & Core Appreciation	Core Composition	Major Study	Trial HSC Exams Task 4 30%
3	Core Performance & Core Appreciation	Core Composition	Major Study	
4	Core Performance & Core Appreciation	Core Composition	Major Study	
5	Core Performance & Core Appreciation	Core Composition	Major Study	Appreciation
6	Core Performance & Core Appreciation	Core Composition	Major Study	Appreciation
7	Core Performance & Core Appreciation	Core Composition	Major Study	Appreciation
8	Core Performance & Core Appreciation	Year 12 FOCUS WEEK	Major Study	Appreciation
9	Core Performance & Core Appreciation	Major Study, Composition	Task 3 Major Study - 30%	Appreciation
10	Task 1 Core Performance & Appreciation 25%	Task 2 - 15% Composition	Major Study	Appreciation
11		Major Study		

Design and Technology

	TASK 1	TASK 2	TASK 3	TASK 4	
Name of task	<i>Project Proposal Presentation</i>	<i>Innovation Case study</i>	<i>Final Project Presentation</i>	<i>Trial HSC</i>	
Type of task	Written	Report	Practical & Written	Exam	
Date of task	Term 4 Week 7	Term 1 Week 7	Term 3 Week 1	Term 3 Weeks 2-3	
Outcomes assessed	H4.1,H4.2 H4.3	H2.2, H3.1, H6.2	H1.2,H3.2, H5.1, H5.2, H6.1	H1.1, H2.1	
Component					Weighting
Knowledge and skills in: Innovation and Emerging technologies		20		20	40
Designing and Producing	20		30	10	60
Total %	20	20	30	30	100

Course Calendar (120 Indicative Hours)

Week	Term 4	Term 1	Term 2	Term 3
1	<i>Introduction to HSC</i>	Innovation and Emerging Technologies	Project development and realisation	Task 3 - 30%
2	Designing and Producing: Project proposal and project management	Project development and realisation	Project development and realisation	Trial HSC Exams Task 4 30%
3	Project proposal and project management	Project development and realisation	Project development and realisation	
4	Project proposal and project management	Project development and realisation	Project development and realisation	
5	Project proposal and project management	Project development and realisation	Project development and realisation	Innovation and Emerging Technologies
6	Project proposal and project management	Project development and realisation	Project development and realisation	Innovation and Emerging Technologies
7	Task 1 - 20%	Task 2 - 20%	Project evaluation	Revision
8	Project proposal and project management	Year 12 FOCUS WEEK	Project evaluation	Revision
9	Innovation and Emerging Technologies	Project development and realisation	Project evaluation	Revision
10	Innovation and Emerging Technologies	Project development and realisation	Project evaluation	Revision
11		Project development and realisation		

Drama

	TASK 1	TASK 2	TASK 3	TASK 4	
Name of task	<i>Australian Drama and Theatre</i>	<i>Individual Project Progress Presentation & Studies in Drama and Theatre</i>	<i>Group Performance & IP Performance Presentation</i>	<i>Trial HSC</i>	
Type of task	Scripted Performance & Essay on Topic Area of Study	IP Progress Presentation & Directed Scenes with Rationale on Topic Area of Study	Progress Presentation of Group Performance & Individual Project/Performance + Logbooks	Written Exam	
Date of task	Term 4 Week 9	Term 1 Week 8	Term 2 Week 9	Term 3 Weeks 2-3	
Outcomes assessed	H1.1, H1.2, H1.7, H2.3, H3.2, H3.3	*H1.3, H1.6, H2.3	H1.3, H1.4, H1.5, H1.6 H2.1, H2.2	H3.1, H3.2, H3.3	
Component					Weighting
Making		20	20		40
Performing	10	10	10		30
Critically Studying	10			20	30
Total %	20	30	30	20	100

*Appropriate outcomes selected based on individual project

Course Calendar (120 Indicative Hours)

Week	Term 4	Term 1	Term 2	Term 3
1	<i>Introduction to HSC</i>	Significant Plays/IPs	Group Performances/IPs	GPs/IPs/Revision
2	Australian Drama/IPs	Significant Plays/IPs	Group Performances/IPs	Trial HSC Exams Task 4 20%
3	Australian Drama/IPs	Significant Plays	Group Performances/IPs	
4	Australian Drama/IPs	Significant Plays	Group Performances/IPs	Group Performances/IPs
5	Australian Drama/IPs	Significant Plays	Group Performances/IPs	Group Performances/IPs
6	Australian Drama/IPs	Significant Plays	Group Performances/IPs	HSC Performances
7	Australian Drama/IPs	Significant Plays	Group Performances/IPs	HSC Performances
8	Australian Drama/IPs	Year 12 FOCUS WEEK Task 2 30%	Group Performances/IPs	Revision
9	Task 1 20%	Significant Plays	Task 3 30%	Revision
10	Significant Plays	Significant Plays/IPs	Group Performances/IPs	Revision
11		Significant Plays/IPs		

Economics

	TASK 1	TASK 2	TASK 3	TASK 4	
Name of task	<i>Global Economy</i>	<i>Australia's place in the Global Economy</i>	<i>Economic Issues</i>	<i>Trial HSC</i>	
Type of task	Case Study	Topic Test	Research Essay	Exam	
Date of task	Term 4 Week 9	Term 1 Week 8	Term 2 Week 8	Term 3 Weeks 2-3	
Outcomes assessed	H4, H6, H10, H12	H1, H3, H11	H5, H9, H7	H1, H2, H4, H8, H10	
Component					Weighting
Knowledge & understanding of course content	5	15	10	10	40
Stimulus-based skills		5		15	20
Inquiry and research	10		10		20
Communication of economic information, ideas and issues in appropriate forms	5	5	5	5	20
Total %	20	25	25	30	100

Course Calendar (120 Indicative Hours)

Week	Term 4	Term 1	Term 2	Term 3
1	<i>Introduction to HSC</i>	Australia's Place in the Global Economy	Economic Issues	Economic Policies and Management
2	The Global Economy	Australia's Place in the Global Economy	Economic Issues	Trial HSC Exams Task 4 40%
3	The Global Economy	Australia's Place in the Global Economy	Economic Issues	
4	The Global Economy	Australia's Place in the Global Economy	Economic Issues	Economic Policies
5	The Global Economy	Australia's Place in the Global Economy	Economic Issues	Economic Policies
6	The Global Economy	Australia's Place in the Global Economy	Economic Issues	Economic Policies
7	The Global Economy	Australia's Place in the Global Economy	Economic Policies	Economic Policies
8	The Global Economy	Year 12 FOCUS WEEK Task 2 - 20%	Task 3 - 20%	Economic Policies
9	Task 1 - 20%	Australia's Place in the Global Economy	Economic Issues	Economic Policies
10	Australia's Place in the Global Economy	Australia's Place in the Global Economy	Economic Policies and Management	Economic Policies
11		Australia's Place in the Global Economy		

Engineering Studies

	TASK 1	TASK 2	TASK 3	TASK 4	
Name of task	<i>Civil Engineering</i>	<i>Personal & Public Transport</i>	<i>Materials Research</i>	<i>Trial HSC</i>	
Type of task	Report	Problem Solving Task	Research Task	Exam	
Date of task	Term 4 Week 8	Term 1 Week 8	Term 2 Week 6	Term 3 Weeks 2-3	
Outcomes assessed	H3.1, H3.2, H4.2, H5.1, H5.2	H3.3, H4.3, H6.1, H6.2	H1.1, H2.1, H2.2, H4.1	H1.2, H2.1, H3.1, H3.3, H4.2, H6.1	
Component					Weighting
Knowledge and understanding of course content	10	15	15	20	60
Knowledge and skills in research, problem solving and communication related to engineering practice	15	10	5	10	40
Total %	25	25	20	30	100

Course Calendar (120 Indicative Hours)

Week	Term 4	Term 1	Term 2	Term 3
1	<i>Introduction to HSC</i>	Personal and Public Transport	Telecommunications	Aeronautical Engineering
2	Civil Structures	Personal and Public Transport	Telecommunications	Trial HSC Exams Task 4 30%
3	Civil Structures	Personal and Public Transport	Telecommunications	
4	Civil Structures	Personal and Public Transport	Telecommunications	Aeronautical Engineering
5	Civil Structures	Personal and Public Transport	Telecommunications	Aeronautical Engineering
6	Civil Structures	Personal and Public Transport	Task 3 - 20%	Aeronautical Engineering
7	Civil Structures	Telecommunications	Aeronautical Engineering	Revision
8	Task 1 - 25%	Year 12 FOCUS WEEK Task 2 - 25%	Aeronautical Engineering	Revision
9	Civil Structures	Telecommunications	Aeronautical Engineering	Revision
10	Civil Structures	Telecommunications	Aeronautical Engineering	Revision
11		Civil Structures		

English – Advanced

	TASK 1	TASK 2	TASK 3	TASK 4	
Name of task	Common Module – Texts and Human Experiences (15%)	Module B: Critical Study of Literature (20%)	Module A: Textual Conversations (20%) Module C: The Craft of Writing (15%)	Trial HSC Paper 1: Texts & Human Experiences (10%) Paper 2: Modules (20%)	
Type of task	Writing Piece & Preparation Notes	Writing Piece & Reflection	Writing Piece & Multimodal Portfolio	Exam	
Date of task	Term 4 Week 8	Term 1 Week 7	Term 2 Week 8	Term 3 Weeks 2-3	
Outcomes assessed	EA12-1, EN12-2, EA12-3, EA12-4, EA12-6	EA12-1, EA12-3, EA12-5, EA12-7, EA12-8, EA12-9	EN12-2, EA12-4, EA12-5, EA12-6, EA12-8, EA12-9	EA12-1, EA12-2, EA12-3, EA12-4, EA12-5, EA12-7, EA12-8, EA12-9	
Component					Weighting
Knowledge and understanding of course content	10	10	15	15	50
Skills in responding to texts and communication of ideas appropriate to audience, purpose and context across all modes	5	10	20	15	50
Total %	15	20	35	30	100

Course Calendar (120 Indicative Hours)

Week	Term 4	Term 1	Term 2	Term 3
1	Common Module	Module B	Module A	Revision
2	Common Module	Module B	Module A	Trial HSC Exams Task 4 30%
3	Common Module	Module B	Module A	
4	Common Module	Module B	Module A	Module C
5	Common Module	Module B	Module A	Module C
6	Common Module	Module B	Module A	Module B
7	Common Module	Task 2 - 20%	Module A	Module B
8	Task 1 - 15%	Year 12 FOCUS WEEK Module C Intensive Session	Task 3 - 35%	Common Module
9	Module B	Module C	Revision	Common Module
10	Module B	Module C	Revision	Module A
11		Module C		

English - Standard

	TASK 1	TASK 2	TASK 3	TASK 4	
Name of task	Common Module – Texts and Human Experiences (15%)	Module B: Close Study of Literature (20%)	Module A: Language, Identity and Culture (20%) Module C: The Craft of Writing (15%)	Trial HSC Paper 1: Texts & Human Experiences (10%) Paper 2: Modules (20%)	
Type of task	Writing Piece & Preparation Notes	Writing Piece & Reflection	Writing Piece & Multimodal Portfolio	Exam	
Date of task	Term 4 Week 8	Term 1 Week 7	Term 2 Week 8	Term 3 Weeks 2-3	
Outcomes assessed	EN12-1, EN12-2, EN12-3, EN12-6	EN12-1, EN12-3, EN12-7, EN12-9	EN12-1, EN12-2, EN12-3, EN12-4, EN12-5, EN12-6, EN12-7, EN12-8, EN12-9	EN12-1, EN12-3, EN12-4, EN12-5, EN12-8, EN12-9	
Component					Weighting
Knowledge and understanding of course content	10	10	15	15	50
Skills in responding to texts and communication of ideas appropriate to audience, purpose and context across all modes	5	10	20	15	50
Total %	15	20	35	30	100

Course Calendar (120 Indicative Hours)

Week	Term 4	Term 1	Term 2	Term 3
1	Common Module	Module B	Module A	Revision
2	Common Module	Module B	Module A	Trial HSC Exams Task 4 30%
3	Common Module	Module B	Module A	
4	Common Module	Module B	Module A	
5	Common Module	Module B	Module A	Module C
6	Common Module	Module B	Module A	Module B
7	Common Module	Task 2 - 20% Module B	Module A	Module B
8	Task 1 - 15%	Year 12 FOCUS WEEK Module C Intensive Session	Task 3 - 35%	Common Module
9	Module B	Module C	Revision	Common Module
10	Module B	Module C	Revision	Module A
11		Module C		

English as an Additional Language or Dialect

	TASK 1	TASK 2	TASK 3	TASK 4	
Name of task	Module A: Texts and Human Experiences	Module B: Language, Identity and Culture	Module D: Focus on Writing	Trial HSC	
Type of task	Podcast Speaking and Listening Task (Multimodal Presentation)	Reading and Writing Task based on unseen material and prescribed text	Imaginative Writing with Written Annotations	Exam	
Date of task	Term 4 Week 8	Term 1 Week 8	Term 2 Week 8	Term 3 Weeks 2-3	
Outcomes assessed					
Component					Weighting
Knowledge and understanding of course content	10	15	10	15	50
Skills in responding to texts and communication of ideas appropriate to audience, purpose and context across all modes	10	15	10	15	50
Total %	20	30	20	30	100

Course Calendar (120 Indicative Hours)

Week	Term 4		Term 1		Term 2		Term 3	
1	Introduction to HSC	Module D: Focus on Writing (10 Hours)	Module D: Focus on Writing	Module D: Focus on Writing (10 Hours)	Module C: Close Study of Text	Module D: Focus on Writing (10 Hours)	Revision	Trial HSC Exams Task 4 30%
2	Module A: Texts & Human Experiences		Module B: Language, Identity & Culture		Module C: Close Study of Text			
3	Module A: Texts & Human Experiences		Module B: Language, Identity & Culture		Module C: Close Study of Text			
4	Module A: Texts & Human Experiences		Module B: Language, Identity & Culture		Module C: Close Study of Text		Module A: Texts & Human Experiences	
5	Module A: Texts & Human Experiences		Module B: Language, Identity & Culture		Module C: Close Study of Text		Module A: Texts & Human Experiences	
6	Module A: Texts & Human Experiences		Module B: Language, Identity & Culture		Module C: Close Study of Text		Module B: Language, Identity & Culture	
7	Module A: Texts & Human Experiences		Module B: Language, Identity & Culture		Module C: Close Study of Text		Module B: Language, Identity & Culture	
8	Task 1 - 20%		Year 12 FOCUS WEEK Task 2 - 30%		Task 3 - 20%		Module C: Close Study of Text	
9	Module A: Texts & Human Experiences		Module B: Language, Identity & Culture		Module C: Close Study of Text		Module C: Close Study of Text	
10	Module A: Texts & Human Experiences		Module B: Language, Identity & Culture		Revision		Revision	
11			Module B: Language, Identity & Culture					

English Extension 1

	TASK 1	TASK 2	TASK 3	
Name of task	<i>In Class Essay – Critical Response</i>	<i>Tutorial Presentation (Multimodal)</i>	<i>Trial HSC</i>	
Type of task	Reading & Writing	Speaking, Listening, Representing	Exam	
Date of task	Term 1 Week 5	Term 2 Week 6	Term 3 Weeks 2-3	
Outcomes assessed	EE12-1 EE12-2 EE12-3	EE12-1 EE12-2 EE12-4	EE12-1 EE12-2 EE12-3 EE12-4	
Component				Weighting
Knowledge and understanding of complex texts and of how and why they are valued.	10	20	20	50
Skills in : - Complex Analysis - Sustained Composition - Independent Investigation	20	20	10	50
Total %	30	40	30	100

Course Calendar (60 Indicative Hours)

Week	Term 4	Term 1	Term 2	Term 3
1	<i>Introduction to HSC</i>	Elective	Elective	Elective
2	Literary Worlds Common Module	Elective	Elective	Trial HSC Exams Task 3 30%
3	Literary Worlds Common Module	Elective	Elective	
4	Literary Worlds Common Module	Elective	Elective	
5	Literary Worlds Common Module	Task 1 - 30%	Elective	Elective
6	Literary Worlds Common Module	Elective	Task 2 - 40%	Elective
7	Literary Worlds Common Module	Elective	Elective	Elective
8	Literary Worlds Common Module	Year 12 FOCUS WEEK	Elective	Literary Worlds Common Module
9	Literary Worlds Common Module	Elective	Elective	Literary Worlds Common Module
10	Literary Worlds Common Module	Elective	Elective	Literary Worlds Common Module
11		Elective		

English Extension 2

	TASK 1	TASK 2	TASK 3	
Name of task	<i>Vive Voce</i>	<i>Literature Review</i>	<i>Critique of the Creative Process</i>	
Type of task	Interview (20 minutes)	Written submission 1200 words	Written submission 1000 words	
Date of task	Term 1 Week 10	Term 2 Week 10	Term 3 Week 1	
Outcomes assessed	EEX12-1, EEX12-4, EEX12-5	EEX12-1, EEX12-2, EEX12-3, EEX12-4	EEX12-2, EEX12-3, EEX12-5	
Component				Weighting
Skills in extensive independent research	15	20	15	50
Skills in sustained composition	15	20	15	50
Total %	30	40	30	100

Course Calendar (60 Indicative Hours)

Week	Term 4	Term 1	Term 2	Term 3
1	<i>Introduction to HSC</i>	Research	Composition	Task 3 - 30%
2	Course Requirements & the forms	Research	Composition	Trial HSC Exams
3	Exploring Form/s	Research	Composition	
4	Exploring Form/s	Research	Composition	
5	Developing proposal	Research	Composition	Major Work Submission
6	Developing proposal	Research	Composition	
7	Developing proposal	Research	Composition	
8	Developing proposal	Year 12 FOCUS WEEK	Composition	
9	Developing proposal	Research	Composition	
10	Task 1 - 30%	Task 2 - 40%	Composition	
11		Research		

English Studies

	TASK 1	TASK 2	TASK 3	TASK 4	
Name of task	Common Module – including related material Texts and Human Experiences	Elective Module F: MiTunes & texts	Elective Module D: Digital Worlds	Trial HSC	
Type of task	Multimodal Presentation	Creative or Management Portfolio	Collection of Coursework	Examination	
Date of task	Term 4 Week 8	Term 1 Week 8	Term 2 Week 7	Term 3 Weeks 2 & 3	
Outcomes assessed	ES12-1, ES12-2, ES12-3, ES12-6	ES12-2, ES12-4, ES12-6, ES12-8	ES12-1, ES12-3, ES12-4, ES12-6, ES12-7, ES12-10	ES12-1, ES12-2, ES12-3, ES12-5, ES12-6, ES12-8, ES12-9	
Component					Weighting
Knowledge and understanding of course content	10	20	10	10	50
Skills in : -Comprehending texts -Communicating ideas Using language accurately, appropriately and effectively	15	10	15	10	50
Total %	25	30	25	20	100

Please Note: All English Studies students are required to sit the Trial HSC Examination in Term 3 Weeks 2/3 as it is one of the Assessment Tasks for this course.

Course Calendar (120 Indicative Hours)

Week	Term 4	Term 1	Term 2	Term 3
1	Common Module	Common Module	Elective Module D: Digital Worlds	Elective Module B: Telling Us About It
2	Common Module	Elective Module F: MiTunes & texts	Elective Module D: Digital Worlds	Trial HSC Exams Task 4 - 20%
3	Common Module	Elective Module F: MiTunes & texts	Elective Module D: Digital Worlds	
4	Common Module	Elective Module F: MiTunes & texts	Elective Module D: Digital Worlds	Elective Module B: Telling Us About It
5	Common Module	Elective Module F: MiTunes & texts	Elective Module B: Telling Us About It	Elective Module B: Telling Us About It
6	Common Module	Elective Module F: MiTunes & texts	Elective Module B: Telling Us About It	Modules Revision
7	Common Module	Elective Module F: MiTunes & texts	Task 3 - 25%	Modules Revision
8	Task 1 - 25%	Year 12 FOCUS WEEK Task 2 - 30%	Elective Module B: Telling Us About It	Common Module Revision
9	Common Module	Elective Module D: Digital Worlds	Elective Module B: Telling Us About It	Common Module Revision
10	Common Module	Elective Module D: Digital Worlds	Elective Module B: Telling Us About It	Common Module Revision
11		Elective Module D: Digital Worlds		

Exploring Early Childhood

	TASK 1	TASK 2	TASK 3	TASK 4	
Name of task	<i>Creative Toy Design</i>	<i>Children's Services</i>	<i>Starting School Booklet</i>	<i>Examination</i>	
Type of task	Practical	Investigation	In Class Task	Examination	
Date of task	Term 4 Week 9	Term 1 Week 7	Term 2 Week 9	Term 3 Weeks 2 & 3	
Outcomes assessed	H1.3, H1.4, H2.2	H2.1, H4.1, H6.1	H1.3, H2.1, H2.2, H6.2	H2.3, H2.4, H4.3, H6.2	
Component					Weighting
Knowledge and understanding of course content		25		25	50
Skills in critical thinking, research, analysis and communicating	25		25		50
Total %	25	25	25	25	100

Course Calendar (120 Indicative Hours)

Week	Term 4	Term 1	Term 2	Term 3
1	Introduction to HSC	Module 8: The Children's Services Industry	Module 7: Historical & Cultural Contexts of Childhood	Exam Revision
2	Module 2: Play and the Developing Child	Module 8: The Children's Services Industry	Module 7: Historical & Cultural Contexts of Childhood	Trial HSC Exams Task 4 25%
3	Module 2: Play and the Developing Child	Module 8: The Children's Services Industry	Module 3: Starting School	
4	Module 2: Play and the Developing Child	Module 8: The Children's Services Industry	Module 3: Starting School	Module 9: Young Children and Media
5	Module 2: Play and the Developing Child	Module 8: The Children's Services Industry	Module 3: Starting School	Module 9: Young Children and Media
6	Module 2: Play and the Developing Child	Module 7: Historical & Cultural Contexts of Childhood	Module 3: Starting School	Module 9: Young Children and Media
7	Module 2: Play and the Developing Child	Task 2 – 25%	Module 3: Starting School	Module 9: Young Children and Media
8	Module 8: The Children's Services Industry	Year 12 FOCUS WEEK	Module 3: Starting School	Module 9: Young Children and Media
9	Task 1 – 25%	Module 7: Historical & Cultural Contexts of Childhood	Task 3 – 25%	Module 9: Young Children and Media
10	Module 8: The Children's Services Industry	Module 7: Historical & Cultural Contexts of Childhood	Module 3: Starting School	Module 9: Young Children and Media
11		Module 7: Historical & Cultural Contexts of Childhood		

Film, Video and Digital Imaging

	TASK 1	TASK 2	TASK 3	TASK 4	
Name of task	<i>Documentary Film</i>	<i>Mid Course Review</i>	<i>Film Production & Proposal</i>	<i>Feature Film</i>	
Type of task	Practical Task Film Proposal, Story Board Documentation	Theory, Critique & Analysis	Film proposal & documentation	Practical Task: The Feature Film	
Date of task	Term 4 Week 10	Term 1 Week 9	Term 2 Week 9	Term 3 Week 7	
Outcomes assessed	1.1A, 1.2A, 2.1A, 2.3A, 3.1A, 3.3A, 4.3A	1.2A, 2.1A, 3.1A, 3.3A, 4.1A, 4.2A, 5.2A	1.1A, 1.2A, 2.1A, 2.2A, 3.1A, 3.3A, 4.1A, 4.2A, 5.2A	1.1A, 1.2A, 2.1A, 2.3A, 3.1A, 3.3A, 4.1A	
Component					Weighting
Artmaking	20		20	30	70
Study of Filmmaking		30			30
Total %	20	30	20	30	100

Course Calendar (120 Indicative Hours)

Week	Term 4	Term 1	Term 2	Term 3
1	<i>Introduction to HSC</i>	Commence Film Review	Commence Film Production and Proposal	Feature Film production
2	Introductory Lessons	Film Viewing	Film Production	Trial HSC Exams
3	Commence Filmmaking and Documentation	Film Coursework	Film Production	
4	Production coursework	Film Coursework and Theory	Film Production	Film production & Post Production, editing
5	Production coursework	Practical Coursework	Progress Submission	Film production & Post Production, editing
6	Production coursework	Practical Coursework	Camera Technique	Film production & Post Production, editing
7	Production coursework	Practical Coursework	Camera Technique	Task 4 Feature Film Submission 30%
8	Production coursework	Year 12 FOCUS WEEK	Camera Technique	Evaluation Film audience review
9	Production coursework & Theory	Task 2 - 30% Practical Coursework	Task 3 Assessment Submission and Evaluation 20%	Evaluation Film audience review
10	Task 1 Submission 20%	Practical Coursework	Task Presentations	Evaluation Film audience review
11		Practical Coursework		

Food Technology

	TASK 1	TASK 2	TASK 3	TASK 4	
Name of task	<i>Contemporary Food Issues</i>	<i>Australian Food Industry & Manufacture</i>	<i>Food Product Development</i>	<i>Trial HSC</i>	
Type of task	Research & Practical Task	Case Study – Research Product	Portfolio & Practical	Exam	
Date of task	Term 4 Week 8	Term 1 Week 9	Term 2 Week 8	Term 3 Weeks 2-3	
Outcomes assessed	H2.1, H3.2, H5.1	H1.1, H1.4, H3.1, H4.2	H1.3, H4.1, H4.2, H5.1	ALL	
Component					Weighting
Knowledge and understanding of course content	5		20	15	40
Knowledge and skills in designing, researching, analysing and evaluating	5	10	10	5	30
Skills in experimenting with and preparing food by applying theoretical concepts	10	20			30
Total %	20	30	30	20	100

Course Calendar (120 Indicative Hours)

Week	Term 4	Term 1	Term 2	Term 3
1	<i>Introduction to HSC</i>	Australian Food Industry	Food Product Development	Food Manufacture
2	Contemporary Nutrition	Australian Food Industry	Food Product Development	Trial HSC Exams Task 4 20%
3	Contemporary Nutrition	Australian Food Industry	Food Product Development	
4	Contemporary Nutrition	Australian Food Industry	Food Product Development	Food Manufacture
5	Contemporary Nutrition	Australian Food Industry	Food Product Development	Food Manufacture
6	Contemporary Nutrition	Australian Food Industry	Food Product Development	Food Manufacture
7	Contemporary Nutrition	Australian Food Industry	Food Product Development	Food Manufacture
8	Task 1 - 20%	Year 12 FOCUS WEEK	Task 3 - 30%	Food Manufacture
9	Contemporary Nutrition	Task 2 – 30%	Food Manufacture	Revision
10	Australian Food Industry	Food Product Development	Food Manufacture	Revision
11		Food Product Development		

History Extension 1

	TASK 1	TASK 2	TASK 3	
Name of task	History Project - Process	History Project - Essay	Trial HSC	
Type of task	Proposal Process Log Annotated Sources	Essay and Bibliography	Exam	
Date of task	Term 1 Week 10	Term 2 Week 10	Term 3 Weeks 2-3	
Outcomes assessed	HE12-2, HE12-3, HE12-4	HE12-1, HE12-2, HE12-3, HE12-4	HE12-1, HE12-3, HE12-4	
Component				Weighting
Knowledge and understanding of significant historical ideas and processes	10	10	20	40
Skills in designing, undertaking and communicating historical inquiry and analysis	20	30	10	60
Total %	30	40	30	100

Course Calendar (60 Indicative Hours)

Week	Term 4	Term 1	Term 2	Term 3
1	<i>Introduction to HSC</i>	History Project	Constructing History – Case Studies	Constructing History – Case Studies
2	Reading History	Constructing History – Key Questions	Constructing History – Case Studies	Trial HSC Exams Task 3 30%
3	Reading History	Constructing History – Key Questions	History Project	
4	Reading History	Constructing History – Key Questions	History Project	Constructing History – Case Studies
5	Constructing History – Key Questions	History Project	History Project	Constructing History – Case Studies
6	Constructing History – Key Questions	History Project	History Project	Constructing History – Case Studies
7	Constructing History – Key Questions	Constructing History – Key Questions	History Project	Constructing History – Case Studies
8	Constructing History – Key Questions	Year 12 FOCUS WEEK	Constructing History – Case Studies	Constructing History – Key Questions
9	History Project	Constructing History – Key Questions	Constructing History – Case Studies	Constructing History – Key Questions
10	History Project	Task 1 - 30%	Task 2 - 40%	Constructing History – Key Questions
11		Constructing History – Key Questions		

Industrial Technology – Multimedia Technologies

	TASK 1	TASK 2	TASK 3	TASK 4	
Name of task	Presentation: Major Project Ideas and Development	<i>Industry Study</i>	<i>Presentation of major Project</i>	<i>Trial HSC</i>	
Type of task	Folio	Report	Practical + Written	Exam	
Date of task	Term 4 Week 7	Term 2 Week 5	Term 3 Week 1	Term 3 Weeks 2-3	
Outcomes assessed	H3.1, H3.2, H3.3, H6.1	H1.1, H1.3, H7.1	H2.1, H4.1, H4.2, H5.1, H5.2, H6.1, H6.2	H1.2, H4.3, H7.	
Component					Weighting
Knowledge and understanding of the organisation and management of, and manufacturing processes and techniques used by, the focus area industry		20		20	40
Knowledge, skills and understanding in designing, managing, problem-solving, communicating and the safe use of manufacturing processes and techniques through the design and production of a quality major project	20		30	10	60
Total %	20	20	30	30	100

Course Calendar (120 Indicative Hours)

Week	Term 4	Term 1	Term 2	Term 3
1	<i>Introduction to HSC</i>	Major Project, Industry Study	Major Project, Industry Study	Task 3 Final Project Presentation 30%
2	Major Project, Industry Study	Major Project, Industry Study	Major Project, Industry Study	Trial HSC Exams Task 4 30%
3	Major Project, Industry Study	Major Project, Industry Study	Major Project, Industry Study	
4	Major Project, Industry Study	Major Project, Industry Study	Major Project, Industry Study	Timber Products and Furniture Technologies
5	Major Project, Industry Study	Major Project, Industry Study	Task 2 Industry Study 20%	Timber Products and Furniture Technologies
6	Major Project, Industry Study	Major Project, Industry Study	Major Project	Timber Products and Furniture Technologies
7	Task 1 Presentation Project Proposal 20%	Major Project, Industry Study	Major Project	Revision
8	Major Project, Industry Study	Year 12 FOCUS WEEK	Major Project	Revision
9	Major Project, Industry Study	Major Project, Industry Study	Major Project	Revision
10	Major Project, Industry Study	Major Project, Industry Study	Major Project	Revision
11		Major Project, Industry Study		

Industrial Technology – Timber Products and Furniture Technologies

	TASK 1	TASK 2	TASK 3	TASK 4	
Name of task	Presentation: Major Project Ideas and Development	<i>Industry Study</i>	<i>Presentation of major Project</i>	<i>Trial HSC</i>	
Type of task	Folio	Report	Practical + Written	Exam	
Date of task	Term 4 Week 7	Term 2 Week 5	Term 3 Week 1	Term 3 Weeks 2-3	
Outcomes assessed	H3.1, H3.2, H3.3, H6.1	H1.1, H1.3, H7.1	H2.1, H4.1, H4.2, H5.1, H5.2, H6.1, H6.2	H1.2, H4.3, H7.	
Component					Weighting
Knowledge and understanding of the organisation and management of, and manufacturing processes and techniques used by, the focus area industry		20		20	40
Knowledge, skills and understanding in designing, managing, problem-solving, communicating and the safe use of manufacturing processes and techniques through the design and production of a quality major project	20		30	10	60
Total %	20	20	30	30	100

Course Calendar (120 Indicative Hours)

Week	Term 4	Term 1	Term 2	Term 3
1	<i>Introduction to HSC</i>	Major Project, Industry Study	Major Project, Industry Study	Task 3 Final Project Presentation 30%
2	Major Project, Industry Study	Major Project, Industry Study	Major Project, Industry Study	Trial HSC Exams Task 4 30%
3	Major Project, Industry Study	Major Project, Industry Study	Major Project, Industry Study	
4	Major Project, Industry Study	Major Project, Industry Study	Major Project, Industry Study	Timber Products and Furniture Technologies
5	Major Project, Industry Study	Major Project, Industry Study	Task 2 Industry Study 20%	Timber Products and Furniture Technologies
6	Major Project, Industry Study	Major Project, Industry Study	Major Project	Timber Products and Furniture Technologies
7	Task 1 Presentation Project Proposal 20%	Major Project, Industry Study	Major Project	Revision
8	Major Project, Industry Study	Year 12 FOCUS WEEK	Major Project	Revision
9	Major Project, Industry Study	Major Project, Industry Study	Major Project	Revision
10	Major Project, Industry Study	Major Project, Industry Study	Major Project	Revision
11		Major Project, Industry Study		

Information, Processes and Technology

	TASK 1	TASK 2	TASK 3	TASK 4	
Name of task	<i>Project Management</i>	<i>Information Systems</i>	<i>Major Project Work</i>	<i>Trial HSC</i>	
Type of task	Minor Project	Minor Project	Major Project	Exam	
Date of task	Term 4 Week 8	Term 1 Week 8	Term 2 Week 9	Term 3 Weeks 2-3	
Outcomes assessed	H1.1, H1.2, H2.1, H2.2, H3.1, H3.2, H4.1, H5.1, H5.2	H1.1, H1.2, H2.1, H2.2, H3.1, H3.2, H4.1, H5.1, H5.2	H1.1, H1.2, H2.1, H2.2, H3.1, H3.2, H4.1, H5.1, H5.2, H6.1, H6.2, H7.1, H7.2	H1.1, H1.2, H2.1, H2.2, H3.1, H3.2, H4.1, H5.1, H5.2, H6.1, H6.2, H7.1, H7.2	
Component					Weighting
Knowledge and understanding of course content	10	15	15	20	60
Knowledge and skills in the design and development of information systems	5	10	15	10	40
Total %	15	25	30	30	100

Course Calendar (120 Indicative Hours)

Week	Term 4	Term 1	Term 2	Term 3
1	<i>Introduction to HSC</i>	Information Systems and Databases	Transaction Processing Systems	Multimedia Systems
2	Project Management	Information Systems and Databases	Transaction Processing Systems	Trial HSC Exams Task 4 30%
3	Project Management	Communication Systems	Transaction Processing Systems	
4	Project Management	Communication Systems	Transaction Processing Systems	Multimedia Systems
5	Project Management	Communication Systems	Transaction Processing Systems	Multimedia Systems
6	Project Management	Communication Systems	Multimedia Systems	Revision
7	Project Management	Communication Systems	Multimedia Systems	Revision
8	Task 1 Project Management 15%	Year 12 FOCUS WEEK Task 2 25%	Multimedia Systems	Revision
9	Information Systems and Databases	Transaction Processing Systems	Task 3 Major Project 30%	Revision
10	Information Systems and Databases	Transaction Processing Systems	Multimedia Systems	Revision
11		Transaction Processing Systems		

Investigating Science

	TASK 1	TASK 2	TASK 3	TASK 4	
Name of task	<i>First-hand investigation</i>	<i>Module Review</i>	<i>Depth Study</i>	<i>Trial HSC</i>	
Type of task	Practical report	Written quiz	Testing claims	Exam	
Date of task	Term 4 Week 8	Term 1 Week 8	Term 2 Week 9	Term 3 Weeks 2 & 3	
Outcomes assessed	INS11/12-2 INS11/12-3 INS11/12-5 INS11/12-7 INS12-12	INS11/12-1 INS11/12-5 INS11/12-6 INS11/12-7 INS12-12 INS12-13	INS11/12-2 INS11/12-3 INS11/12-4 INS11/12-5 INS11/12-7 INS12-14	INS11/12-1 INS11/12-4 INS11/12-5 INS11/12-6 INS12-12 INS12-13 INS12-14 INS12-15	
Component					Weighting
Skills in working scientifically	15	15	20	10	60
Knowledge and understanding of course content	5	5	10	20	40
Total %	20	20	30	30	100

Course Calendar (120 Indicative Hours)

Week	Term 4	Term 1	Term 2	Term 3
1	<i>Introduction to HSC</i>	Module 6 Technologies	Module 7 Fact or Fallacy	Revision
2	Module 5 - Scientific Investigation	Module 6 -Technologies	Module 7 Fact or Fallacy	Trial HSC Exams Task 4 30%
3	Module 5 - Scientific Investigation	Module 6 -Technologies	Module 7 Fact or Fallacy	
4	Module 5 - Scientific Investigation	Module 6 -Technologies	Module 7 Fact or Fallacy	Module 8 Science & Society
5	Module 5 - Scientific Investigation	Module 6 Technologies	Module 7 Fact or Fallacy	Module 8 Science & Society
6	Module 5 - Scientific Investigation	Module 6 Technologies	Module 8 Science & Society	HSC Revision
7	Module 5 - Scientific Investigation	Module 7 Fact or Fallacy	Module 8 Science & Society	HSC Revision
8	Task 1 – 20%	Year 12 FOCUS WEEK Task 2 - 20%	Module 8 Science & Society	HSC Revision
9	Module 6 -Technologies	Module 7 Fact or Fallacy	Task 3 – 30%	HSC Revision
10	Module 6 -Technologies	Module 7 Fact or Fallacy	Module 8 Science & Society	HSC Revision
11		Module 7 Fact or Fallacy		

Japanese Beginners

	TASK 1	TASK 2	TASK 3	TASK 4	
Name of task	<i>School Life</i>	<i>Travelling in Japan</i>	<i>Future Plans</i>	<i>Trial HSC</i>	
Type of task	In-class test (Responding in English to written and aural texts) + oral interview in Japanese	In-class test (Responding in English to written and aural texts) + written task in Japanese	In-class test (Responding in English to written and aural texts) + oral interview in Japanese	Exam	
Date of task	Term 4 Week 8	Term 1 Week 6	Term 2 Week 6	Term 3 Weeks 2-3	
Outcomes assessed	1.1, 1.2, 1.3, 2.1, 2.2, 2.3, 2.4, 2.5	2.1, 2.2, 2.3, 2.4, 2.5, 2.6, 3.1, 3.2, 3.3	1.1, 1.2, 1.3, 2.1, 2.2, 2.3, 2.4, 2.5, 2.6	2.1, 2.2, 2.3, 2.4, 2.5, 2.6, 3.1, 3.2, 3.3, 3.4	
Component					Weighting
Listening	5	7	8	10	30
Reading	5	8	7	10	30
Speaking	10		10		20
Writing		10		10	20
Total %	20	25	25	30	100

Course Calendar (120 Indicative Hours)

Week	Term 4	Term 1	Term 2	Term 3
1	<i>Introduction to HSC</i>	U7 School Life	U10 Future in Japan	Trial Review
2	U5 Japanese Homes	U7 School Life	U10 Future in Japan	Trial HSC Exams Task 4 30%
3	U5 Japanese Homes	U8 Exploring Japan	U10 Future in Japan	
4	U5 Japanese Homes	U8 Exploring Japan	U11 Future Plans	Speaking and Skill Building
5	U6 Plain Form	U8 Exploring Japan	Task Preparation	Speaking and Skill Building
6	U6 Plain Form	Task 2 - 25% U9 Traveling in Japan	Task 3 - 25%	Speaking and Skill Building
7	U6 Plain Form	U9 Traveling in Japan	Integrated Review	Speaking and Skill Building
8	Task 1 - 20% U7 School Life	Year 12 FOCUS WEEK	Integrated Review	Speaking and Skill Building
9	U7 School Life	U9 Traveling in Japan	Integrated Review	Speaking and Skill Building
10	U7 School Life	U9 Traveling in Japan	Trial Review	Speaking and Skill Building
11		U10 Future in Japan		

Legal Studies

	TASK 1	TASK 2	TASK 3	TASK 4	
Name of task	<i>Crime</i>	<i>Human Rights</i>	<i>Family</i>	<i>Trial HSC</i>	
Type of task	Topic Test	Short answer	In class extended response	Exam	
Date of task	Term 4 Week 10	Term 1 Week 9	Term 2 Week 8	Term 3 Weeks 2-3	
Outcomes assessed	H1, H3	H2, H6, H8	H4, H8	H5, H7, H9, H10	
Component					Weighting
Knowledge and understanding of course content	15	5	5	20	45
Analysis and evaluation	5	5	5	5	20
Inquiry and research		5	10		15
Communication of legal information, ideas and issues in appropriate forms	5	5	5	5	20
Total %	25	20	25	30	100

Course Calendar (120 Indicative Hours)

Week	Term 4	Term 1	Term 2	Term 3
1	<i>Introduction to HSC</i>	Crime	Family	Consumers
2	Crime	Human Rights	Family	Trial HSC Exams Task 4 30%
3	Crime	Human Rights	Family	
4	Crime	Human Rights	Family	
5	Crime	Human Rights	Family	Consumers
6	Crime	Human Rights	Family	Consumers
7	Crime	Human Rights	Family	Consumers
8	Crime	Year 12 FOCUS WEEK	Task 3 - 25%	Consumers
9	Crime	Task 2 - 25%	Family/Consumers	Consumers
10	Task 1 - 20%	Family	Consumers	Consumers
11		Family		

Marine Studies

	TASK 1	TASK 2	TASK 3	TASK 4	
Name of task	<i>Seafood Processing and Handling</i>	<i>Marine Aquariums</i>	<i>PIP</i>	<i>Coral Reef Ecology</i>	
Type of task	Food Practical	Field Task	Scientific Report	Research Report	
Date of task	Term 4 Week 5	Term 1 Week 9	Term 2 Week 5	Term 3 Week 4	
Outcomes assessed	1.1, 2.1, 4.1, 5.3, 5.4	1.1, 1.4, 2.2, 2.3, 5.1, 5.3, 5.4	1.3, 1.5, 2.3, 3.2, 3.3, 3.4, 5.2	1.3, 1.4, 2.3, 3.1, 3.2, 3.3, 3.4	
Component					Weighting
Skills in Working Scientifically	15	10	10	15	50
Knowledge and Understanding	10	15	15	10	50
Total %	25	25	25	25	100

Course Calendar (120 Indicative Hours)

Week	Term 4	Term 1	Term 2	Term 3
1	Seafood Handling and processing	Marine Anatomy & Physiology	PIP	Seabirds of our Coast
2	Seafood Handling and processing	Marine Anatomy & Physiology	PIP	Trial HSC Exams
3	Seafood Handling and processing	Marine Anatomy & Physiology	PIP	
4	Seafood Handling and processing	Marine Aquarium	PIP	Task 4 – 25%
5	Task 1 – 25%	Marine Aquarium	Task 3 – 25%	Seabirds of our Coast
6	Aquaculture	Marine Aquarium	Coral Reef Ecology	Seabirds of our Coast
7	Aquaculture	Marine Aquarium	Coral Reef Ecology	Estuarine Studies
8	Aquaculture	Year 12 FOCUS WEEK	Coral Reef Ecology	Estuarine Studies
9	Aquaculture	Task 2 – 25% Marine Aquarium	Coral Reef Ecology	Estuarine Studies
10	Marine Anatomy & Physiology	PIP	Seabirds of our Coast	Estuarine Studies
11		PIP		

Mathematics Advanced

	TASK 1	TASK 2	TASK 3	TASK 4	
Name of task	<i>Investigation</i>	<i>Topic Review</i>	<i>Topic Review</i>	<i>Trial HSC</i>	
Type of task	Assignment	Written	Written	Exam	
Date of task	Term 4 Week 8	Term 1 Week 8	Term 2 Week 7	Term 3 Weeks 2-3	
Outcomes assessed	H1, H2, H3	H1, H2, H3, H4, H5	H1, H2, H3, H4, H5, H6, H7, H9	H1, H2, H3, H4, H5, H6, H7, H8, H9	
Component					Weighting
Understanding, Fluency & Communication	10	15	10	15	50
Problem Solving, Reasoning and Justification	10	15	10	15	50
Total %	20	30	20	30	100

Course Calendar (120 Indicative Hours)

Week	Term 4	Term 1	Term 2	Term 3
1	<i>Logarithms</i>	Trigonometric functions	Statistics	Continuous probability distributions
2	Trigonometric functions	Further differentiation	Correlation and regression	Trial HSC Exams Task 4 30%
3	Trigonometric functions	Further differentiation	Correlation and regression	
4	Discrete Probability Distributions	Geometrical applications of differentiation	Financial applications of sequences	Sequences and series
5	Discrete Probability Distributions	Geometrical applications of differentiation	Financial applications of sequences	Transformations of functions
6	Sequences and Series	Geometrical applications of differentiation	Financial applications of sequences	Trigonometric functions
7	Sequences and Series	Geometrical applications of differentiation	Task 3 – 20%	Further differentiation
8	Task 1 – 20%	Year 12 FOCUS WEEK Task 2 – 30%	Continuous probability distributions	Integration
9	Transformations of functions	Integration	Continuous probability distributions	Revision
10	Trigonometric functions	Integration	Continuous probability distributions	Revision
11		Statistics		

Mathematics Extension 1

	TASK 1	TASK 2	TASK 3	TASK 4	
Name of task	Topic Review	Topic Review	Investigation	Trial HSC	
Type of task	Written	Written	Assignment	Exam	
Date of task	Term 4 Week 8	Term 1 Week 8	Term 2 Week 8	Term 3 Week 2-3	
Outcomes assessed	ME12-1 ME12-2 ME12-3	ME12-1 ME12-2 ME12-3 ME12-4 ME12-6	ME12-1 ME12-2 ME12-3 ME12-4 ME12-5 ME12-6 ME12-7	ME12-1 ME12-2 ME12-3 ME12-4 ME12-5 ME12-6 ME12-7	
Component					Weighting
Understanding, Fluency & Communication	10	15	10	15	50
Problem Solving, Reasoning and Justification	10	15	10	15	50
Total %	20	30	20	30	100

Course Calendar (60 Indicative Hours)

Week	Term 4	Term 1	Term 2	Term 3
1	Proof by mathematical induction	Further Trigonometric Equations	Further Vectors	Revision
2	Proof by mathematical induction	Derivative of inverse trigonometric functions	Further Vectors	Trial HSC Exams Task 4 30%
3	Vectors	Derivative of inverse trigonometric functions	Differential Equation	
4	Vectors	Derivative of inverse functions	Differential Equation	Vectors
5	Vectors	Further Integration	Differential Equation	Derivative of inverse functions
6	Vectors	Further Integration	Binomial Distributions	Differential Equation
7	Trigonometric Identities	Further Integration	Binomial Distributions	Binomial Distributions
8	Trigonometric Identities	Year 12 FOCUS WEEK Task 2 – 30%	Task 3 20%	Trigonometric Identities
9	Task 1- 20%	Further Integration	Binomial Distributions	Revision
10	Further Trigonometric Equations	Further Integration	Binomial Distributions	Revision
11		Further Integration		

Mathematics Extension 2

	TASK 1	TASK 2	TASK 3	TASK 4	
Name of task	Topic Review	Topic Review	Investigation	Trial HSC	
Type of task	Written	Written	Assignment	Exam	
Date of task	Term 4 Week 9	Term 1 Week 8	Term 2 Week 9	Term 3 Week 2-3	
Outcomes assessed	MEX12-1 MEX12-2 MEX12-4 MEX12-7 MEX12-8	MEX12-1 MEX12-2 MEX12-3 MEX12-4 MEX12-5 MEX12-7 MEX12-8	MEX12-1 MEX12-2 MEX12-4 MEX12-5 MEX12-6 MEX12-7 MEX12-8	MEX12-1 MEX12-2 MEX12-3 MEX12-4 MEX12-5 MEX12-6 MEX12-7 MEX12-8	
Component					Weighting
Understanding, Fluency & Communication	10	15	10	15	50
Problem Solving, Reasoning and Justification	10	15	10	15	50
Total %	20	30	20	30	100

Course Calendar (60 Indicative Hours)

Week	Term 4	Term 1	Term 2	Term 3
1	Complex numbers	Mathematical Proofs	Further Mathematical Induction	Revision
2	Complex numbers	3D Vectors	Further Mathematical Induction	Trial HSC Exams Task 4 30%
3	Applying Complex numbers	3D Vectors	Further Mathematical Induction	
4	Applying Complex numbers	3D Vectors	Mechanics	Applying Complex numbers
5	Applying Complex numbers	Further Integration	Mechanics	Mathematical Proofs
6	Applying Complex numbers	Further Integration	Mechanics	3D Vectors
7	Applying Complex numbers	Further Integration	Mechanics	Further Integration
8	Mathematical Proofs	Year 12 FOCUS WEEK Task 2 – 30%	Mechanics	Further Mathematical Induction
9	Task 1 – 20%	Further Integration	Task 3 – 20%	Revision
10	Mathematical Proofs	Further Integration	Mechanics	Revision
11		Further Integration		

Mathematics Standard 2

	TASK 1	TASK 2	TASK 3	TASK 4	
Name of task	<i>Investigation</i>	<i>Topic Review</i>	<i>Topic Review</i>	<i>Trial HSC</i>	
Type of task	Assignment	Written	Written	Exam	
Date of task	Term 4 Week 9	Term 1 Week 8	Term 2 Week 7	Term 3 Weeks 2-3	
Outcomes assessed	MS2-12.5, MS2-12.9, MS2-12.10	MS2-12.4 MS2-12.5, MS2-12.8 MS2-12.9, MS2-12.10	MS2-12.4 MS2-12.5, MS2-12.6 MS2-12.8 MS2-12.9, MS2-12.10	MS2-12.4 MS2-12.5, MS2-12.6 MS2-12.8 MS2-12.9, MS2-12.10	
Component					Weighting
Understanding, Fluency and Communication	15	10	10	15	50
Problem Solving, Reasoning & Justification	15	10	10	15	50
Total %	30	20	20	30	100

Course Calendar (120 Indicative Hours)

Week	Term 4	Term 1	Term 2	Term 3
1	Working With Time	Network Concepts	Bivariate data Analysis Section 4	Revision
2	Working With Time	Investment & Loans	Bivariate data Analysis Section 4	Trial HSC Exams Task 4 30%
3	Working With Time	Investment & Loans	Bivariate data Analysis Section 4	
4	Budgeting & Household Expenses	Non Right Angled Trigonometry	Annuities	Normal Distribution
5	Budgeting & Household Expenses	Non Right Angled Trigonometry	Annuities	Normal Distribution
6	Rates and Ratios	Non Right Angled Trigonometry	Annuities	Normal Distribution
7	Rates and Ratios	Non Right Angled Trigonometry	Task 3 Topic Review 20%	Critical Path Analysis
8	Rates and Ratios	Year 12 FOCUS WEEK Task 2 Topic Review 20%	Non Linear Relationships	Critical Path Analysis
9	Task 1 Assignment 30%	Simultaneous Equations	Non Linear Relationships	Critical Path Analysis
10	Network Concepts	Simultaneous Equations	Non Linear Relationships	Revision
11		Simultaneous Equations		

Mathematics Standard 1

	TASK 1	TASK 2	TASK 3	TASK 4	
Name of task	<i>Investigation</i>	<i>Topic Review</i>	<i>Topic Review</i>	<i>Trial HSC</i>	
Type of task	Assignment	Written	Written	Exam	
Date of task	Term 4 Week 7	Term 1 Week 8	Term 2 Week 7	Term 3 Weeks 2-3	
Outcomes assessed	MS1-12-5, MS1-12-9MS1-12-10	MS1-12-3, MS1-12-8, MS1-12-9, MS1-12-10	MS1-12-3, MS1-12-8, MS1-12-9, MS1-12-10	MS1-12-3, MS1-12-8, MS1-12-9, MS1-12-10	
Component					Weighting
Understanding, Fluency and Communication	15	10	10	15	50
Problem Solving, Reasoning & Justification	15	10	10	15	50
Total %	30	20	20	30	100

Course Calendar (120 Indicative Hours)

Week	Term 4	Term 1	Term 2	Term 3
1	<i>Introduction to HSC</i>	Networks and Paths	Solutions of Linear Relationships	Depreciation & Loss
2	Rates	Networks and Paths	Solutions of Linear Relationships	Trial HSC Exams Task 4 30%
3	Rates	Networks and Paths	Solutions of Linear Relationships	
4	Rates	Investments	Further Statistical Analysis	Depreciation & Loss
5	Rates	Investments	Further Statistical Analysis	Depreciation & Loss
6	Rates	Investments	Scale Drawings	Graphs of Practical Situations
7	Task 1 - 30%	Investments	Task 3 - 20%	Graphs of Practical Situations
8	Networks and Paths	Year 12 FOCUS WEEK Task 2 - 20%	Scale Drawings	Graphs of Practical Situations
9	Networks and Paths	Right Angled Trigonometry	Scale Drawings	Graphs of Practical Situations
10	Networks and Paths	Right Angled Trigonometry	Depreciation & Loss	Revision
11		Right Angled Trigonometry		

Modern History

	TASK 1	TASK 2	TASK 3	TASK 4	
Name of task	<i>Power & Authority in the Modern World 1919-1946</i>	<i>National Study: Russia</i>	<i>Peace & Conflict: Conflict in Europe</i>	<i>Trial HSC</i>	
Type of task	Source Analysis	Essay	Historical Analysis: Contentious Perspectives	Exam	
Date of task	Term 4 Week 9	Term 1 Week 9	Term 2 Week 9	Term 3 Weeks 2-3	
Outcomes assessed	MH12-6 MH12-7 MH12-8 MH12-9	MH12-1 MH12-2 MH12-3 MH12-5 MH12-9	MH12-3 MH12-4 MH12-6 MH12-7 MH12-8 MH12-9	All Outcomes	
Component					Weighting
Knowledge and understanding of course content	5	10	5	20	40
Historical skills in the analysis and evaluation of sources and interpretations	5		10	5	20
Historical inquiry and research	5	5	10		20
Communication of historical understanding in appropriate forms	5	5	5	5	20
Total %	20	20	30	30	100

Course Calendar (120 Indicative Hours)

Week	Term 4	Term 1	Term 2	Term 3
1	<i>Introduction to HSC</i>	National Study: Russia	Peace & Conflict: Europe	Revision
2	Power & Authority	National Study: Russia	Peace & Conflict: Europe	Trial HSC Exams Task 4 30%
3	Power & Authority	National Study: Russia	Change in the Modern World: South Africa	
4	Power & Authority	National Study: Russia	Change in the Modern World: South Africa	Revision Power & Authority
5	Power & Authority	National Study: Russia	Change in the Modern World: South Africa	Revision Power & Authority
6	Power & Authority	National Study: Russia	Change in the Modern World: South Africa	Revision National Study: Russia
7	Power & Authority	National Study: Russia	Change in the Modern World: China	Revision Peace & Conflict: Europe
8	Power & Authority	Year 12 FOCUS WEEK	Change in the Modern World: South Africa	Revision Peace & Conflict: Europe
9	Task 1 - 20% National Study: Russia	Task 2 - 20% Peace & Conflict: Europe	Task 3 - 30% Change in the Modern World: South Africa	Revision Change in the Modern World: South Africa
10	National Study: Russia	Peace & Conflict: Europe	Change in the Modern World: South Africa	Revision Change in the Modern World: South Africa
11		Peace & Conflict: Europe		

Music 1

	TASK 1	TASK 2	TASK 3	TASK 4	
Name of task	Core Performance, Core Composition Elective 1	Core Musicology Elective 2&3 (in progress)	Aural & Elective Options 1, 2 & 3	Trial HSC Core Aural Skills	
Type of task	Performance	Composition & Musicology	Presentation of Performance	Exam	
Date of task	Term 4 Week 8	Term 1 Weeks 9-10	Term 2 Week 10	Term 3 Weeks 2-3	
Outcomes assessed	H1, H2, H5, H6, H7, H8, H9, H10, H11	H1, H2, H3, H4, H5, H6, H7, H8, H9, H10, H11	Musicology: H2, H4, H5, H6, H7, H11 Performance: H1, H2, H5, H7, H9, H11 Composition: H2, H3, H4, H5, H6, H7, H8, H10, H11	H4, H5, H6, H7, H8, H10, H11	
Component					Weighting
Performance	5			5	10
Composition	10				10
Musicology		10			10
Aural			10	15	25
Electives	5	10	15	15	45
Total %	20	20	25	35	100

Course Calendar (120 Indicative Hours)

Week	Term 4	Term 1	Term 2	Term 3
1	<i>Introduction to HSC</i>	Music for Radio, Film, Television & Multimedia - Performance	20 th & 21 st Century Music	Revision
2	Music for Radio, Film, Television & Multimedia - Performance	Independent Research	20 th & 21 st Century Music	Trial HSC Exams Task 4 30%
3	Music for Radio, Film, Television & Multimedia - Performance	Independent Research	20 th & 21 st Century Music	
4	Music for Radio, Film, Television & Multimedia - Performance	Independent Research	20 th & 21 st Century Music	Performance revision
5	Music for Radio, Film, Television & Multimedia - Performance	Independent Research	20 th & 21 st Century Music	Performance revision
6	Music for Radio, Film, Television & Multimedia - Performance	Independent Research	20 th & 21 st Century Music	Performance revision
7	Music for Radio, Film, Television & Multimedia - Performance	Independent Research	20 th & 21 st Century Music	Performance revision
8	Task 1 20%	Year 12 FOCUS WEEK	20 th & 21 st Century Music	Revision - Aural
9	Music for Radio, Film, Television & Multimedia - Performance	Task 2 20% Independent Research	20 th & 21 st Century Music	Revision - Aural
10	Music for Radio, Film, Television & Multimedia - Performance	Task 2 cont. Independent Research	Task 3 30%	Revision - Aural
11		Independent Research		

Personal Development, Health and Physical Education

	TASK 1	TASK 2	TASK 3	TASK 4	
Name of task	<i>Examining Australian Sport</i>	<i>Diabetes in Australia</i>	<i>Planning for the City to Surf</i>	<i>HSC Trial</i>	
Type of task	Investigation Task	Research Report	Case Study Analysis	Exam	
Date of task	Term 4 Week 9	Term 1 Week 10	Term 2 Week 9	Term 3 Week 2-3	
Outcomes assessed	H12, H16	H1, H2, H4, H15	H7, H8, H11, H17	H5, H12, H14, H16, H17	
Component					Weighting
Knowledge and understanding of course content	5	10	10	15	40
Skills in critical thinking, research, analysis and communicating	10	20	20	10	60
Total %	15	30	30	25	100

Course Calendar (120 Indicative Hours)

Week	Term 4	Term 1	Term 2	Term 3
1	Introduction to HSC	Sport and Physical Activity in Australian Society	Factors Affecting Performance	Improving Performance
2	Sport and Physical Activity in Australian Society	Health Priorities in Australia	Factors Affecting Performance	Trial HSC Exams Task 4 25%
3	Sport and Physical Activity in Australian Society	Health Priorities in Australia	Factors Affecting Performance	
4	Sport and Physical Activity in Australian Society	Health Priorities in Australia	Factors Affecting Performance	Improving Performance
5	Sport and Physical Activity in Australian Society	Health Priorities in Australia	Factors Affecting Performance	Improving Performance
6	Sport and Physical Activity in Australian Society	Health Priorities in Australia	Factors Affecting Performance	Improving Performance
7	Sport and Physical Activity in Australian Society	Health Priorities in Australia	Factors Affecting Performance	Improving Performance
8	Sport and Physical Activity in Australian Society	Year 12 FOCUS WEEK	Factors Affecting Performance	Improving Performance
9	Task 1 – 15%	Health Priorities in Australia	Task 3 – 30%	Improving Performance
10	Sport and Physical Activity in Australian Society	Task 2 – 30%	Factors Affecting Performance	Revision
11		Health Priorities in Australia		

Photography

	TASK 1	TASK 2	TASK 3	TASK 4	
Name of task	Artmaking Review	Portraiture Practices	Temporal Accounts	Exam & Folio Submission	
Type of task	"Re-Imagine" Digital practices task	Curated portfolio & written response	Field work: Practical task	Final portfolio + website of curated images & related exam	
Date of task	Term 4 Week 9	Term 1 Week 10	Term 2 Week 8	Term 3 Week 6	
Outcomes assessed	M1, M2, M3, M4, M5, CH1, CH2, CH3	M1, M3, M4, M5, CH1, CH2, CH3, CH4	M1, M2, M3, M4, M5, CH1, CH2, CH3, CH4, CH5	M1, M2, M3, M4, M5, CH4, CH5	
Component					Weighting
Artmaking	15	15	15	25	70
Study of Photography	10	10		10	30
Total %	25	25	15	35	100

Course Calendar (120 Indicative Hours)

Week	Term 4	Term 1	Term 2	Term 3
1	<i>Introduction to HSC</i>	Commence Portraiture Artmaking & Study	Temporal Accounts	Portfolio Review & Post Production
2	Commence Course: Digital Modules	Portraiture Study of Photography	Temporal Accounts	Trial HSC Exams
3	Digital Modules	Portraiture	Field Trip (Cairns)	
4	Commence What Is It? Artmaking & Study	Portraiture	Temporal Accounts	Portfolio Production
5	What Is It?	Portraiture	Temporal Accounts	Portfolio Production
6	What Is It?	Portraiture, Curating images	Temporal Accounts	Task 4 HSC Folio Submission 35%
7	What Is It?	Portraiture, Curating images	Field Trip (Sydney)	Portfolio Review & Evaluation
8	What Is It?	Year 12 FOCUS WEEK	Task 3 Portfolio Review and Research 15%	Time Based Forms
9	Task 1 Portfolio Review and Research 25%	Commence Temporal Accounts	Evaluation & curation	Time Based Forms
10	Evaluation & curation	Task 2 Portfolio Review and Research 25%	Portfolio Review & Post Production	Time Based Forms
11		Temporal Accounts		

Physics

	TASK 1	TASK 2	TASK 3	TASK 4	
Name of task	<i>Depth Study</i>	<i>Module Review</i>	<i>Data Analysis & Investigation</i>	<i>Trial HSC</i>	
Type of task	Depth Study – Scientific Research	Written Quiz	Practical Scientific Skills	Exam	
Date of task	Term 4 Week 9	Term 1 Week 8	Term 2 Week 6	Term 3 Weeks 2 & 3	
Outcomes assessed	PH12-2 PH12-4 PH12-7 PH12-14 PH12-3 PH12-5	PH12-12 PH11/12-4 PH11/12-7 PH12-13	PH12-1 PH12-2 PH12-4 PH12-6 PH12-7	PH12-2 PH12-4 PH12-12 PH12-13 PH12-14	
Component					Weighting
Skills in Working Scientifically	20	10	15	15	60
Knowledge and Understanding	10	10	5	15	40
Total %	30	20	20	30	100

Course Calendar (120 Indicative Hours)

Week	Term 4	Term 1	Term 2	Term 3
1	<i>Introduction to HSC</i>	Module 5-Advanced Mechanics	Module 6-Electromagnetism	Module 8-The Nature of Light
2	Scientific Skills	Module 5-Advanced Mechanics	Module 6-Electromagnetism	Trial HSC Exams Task 4 30%
3	Module 7-From the universe to the atom	Module 5-Advanced Mechanics	Module 6-Electromagnetism	
4	Module 7-From the universe to the atom	Module 5-Advanced Mechanics	Module 6-Electromagnetism	Module 8-The Nature of Light
5	Module 7-From the universe to the atom	Module 5-Advanced Mechanics	Module 8-The Nature of Light	Module 8-The Nature of Light
6	Module 7-From the universe to the atom	Module 6-Electromagnetism	Task 3 – 20%	Module 8-The Nature of Light
7	Module 7-From the universe to the atom	Module 6-Electromagnetism	Module 8-The Nature of Light	Trial HSC Revision
8	Module 7-From the universe to the atom	Task 2 – 30% Year 12 FOCUS WEEK	Module 8-The Nature of Light	Trial HSC Revision
9	Task 1 – 20%	Module 6-Electromagnetism	Module 8-The Nature of Light	Trial HSC Revision
10	Module 7-From the universe to the atom	Module 6-Electromagnetism	Module 8-The Nature of Light	Trial HSC Revision
11		Module 6-Electromagnetism		

Science Extension

	TASK 1	TASK 2	TASK 3	
Name of task	Scientific Research (Portfolio Section 1)	Scientific Research (Portfolio Section 2)	Scientific Research Report	
Type of task	Secondary Research	Written Quiz	Scientific Report/Presentation	
Date of task	Term 1 Week 5	Term 2 Week 10	Term 3 Week 4	
Outcomes assessed	SE1, SE2, SE3, SE5, SE7	SE1, SE2, SE3, SE4, SE5, SE6, SE7	SE1, SE2, SE3, SE4, SE5, SE6, SE7	
Component				Weighting
Communicating Scientifically	10	10	10	30
Gathering, recording, analysing and evaluating data	10	10	10	30
Application of scientific research skills	10	10	20	40
Total %	30	30	40	100

Course Calendar (60 Indicative Hours)

Week	Term 4	Term 1	Term 2	Term 3
1	<i>Introduction to HSC</i>	Module 2: The Scientific Research Proposal	Module 3: The Data, Evidence and Decisions	Module 4: The Research Report
2	Module 1: The Foundations of Scientific Thinking	Module 2: The Scientific Research Proposal	Module 3: The Data, Evidence and Decisions	Trial HSC Exams
3	Module 1: The Foundations of Scientific Thinking	Module 2: The Scientific Research Proposal	Module 3: The Data, Evidence and Decisions	
4	Module 1: The Foundations of Scientific Thinking	Module 2: The Scientific Research Proposal	Module 4: The Research Report	
5	Module 1: The Foundations of Scientific Thinking	Task 1 – 30%	Module 4: The Research Report	Task 3 – 40%
6	Module 1: The Foundations of Scientific Thinking	Module 3: The Data, Evidence and Decisions	Module 4: The Research Report	HSC Revision
7	Module 1: The Foundations of Scientific Thinking	Module 3: The Data, Evidence and Decisions	Module 4: The Research Report	HSC Revision
8	Module 2: The Scientific Research Proposal	Year 12 FOCUS WEEK	Module 4: The Research Report	HSC Revision
9	Module 2: The Scientific Research Proposal	Module 3: The Data, Evidence and Decisions	Module 4: The Research Report	HSC Revision
10	Module 2: The Scientific Research Proposal	Module 3: The Data, Evidence and Decisions	Task 2 – 30%	HSC Revision
11		Module 3: The Data, Evidence and Decisions		

Society and Culture

	TASK 1	TASK 2	TASK 3	TASK 4	
Name of task	<i>PIP Presentation and Proposal</i>	<i>Social and Cultural Continuity and Change</i>	<i>Depth Study 1 Belief Systems and Ideologies</i>	<i>Trial HSC</i>	
Type of task	Multimodal task	Research and structured responses	Research and in-class responses	Exam	
Date of task	Term 4 Week 6	Term 1 Week 6	Term 2 Week 7	Term 3 Weeks 2-3	
Outcomes assessed	H6, H7, H8, H9	H1, H2, H3, H4, H5, H6, H7, H9, H10	H1, H2, H4, H5, H7, H9, H10	H1, H2, H3, H4, H5, H6, H7, H10	
Component					Weighting
Knowledge and understanding of course content		10	20	20	50
Application and evaluation of social and cultural research methods	10		10	10	30
Communication of information, ideas and issues in appropriate forms	10	10			20
Total %	20	20	30	30	100

Note: Since the final project will be assessed externally, no part of the product is to be assessed as part of the school assessment program. The Personal Interest Project (PIP) process, however, may be assessed.

Course Calendar (120 Indicative Hours)

Week	Term 4	Term 1	Term 2	Term 3
1	<i>Introduction to HSC & PIP</i>	Social Continuity and Change	Depth Study 1	Depth Study 2
2	Personal Interest Project	Social Continuity and Change	Depth Study 1	Trial HSC Exams Task 4 30% + PIP SUBMISSION TO NESA
3	Personal Interest Project	Social Continuity and Change	Depth Study 1	
4	Personal Interest Project	Social Continuity and Change	Depth Study 1	Depth Study 2
5	Personal Interest Project	Social Continuity and Change	Depth Study 1	Depth Study 2
6	Task 1 - 20% Personal Interest Project	Task 2 - 20% Personal Interest Project	Depth Study 1	Depth Study 2
7	Social & cultural continuity & change	Personal Interest Project	Task 3 - 30% Depth Study 1	Depth Study 2
8	Social Continuity and Change	Year 12 FOCUS WEEK	Depth Study 2	Depth Study 2
9	Social Continuity and Change	Personal Interest Project	Depth Study 2	Depth Study 2
10	Social Continuity and Change	Personal Interest Project	Depth Study 2	Depth Study 2
11		Personal Interest Project		

Software Design and Development

	TASK 1	TASK 2	TASK 3	TASK 4	
Name of task	<i>Topic Test</i>	<i>Programming Task</i>	<i>Major Software Project</i>	<i>Trial HSC</i>	
Type of task	Written	Written/ Practical	Written/ Practical	Exam	
Date of task	Term 4 Week 7	Term 1 Week 8	Term 2 Week 5	Term 3 Weeks 2-3	
Outcomes assessed	H1.1, H1.3	H1.1, H2.1, H2.2	H4.3, H6.1, H6.2, H6.3, H6.4	H3.1, H3.2, H4.1, H4.2	
Component					Weighting
Knowledge and understanding of course content.	10	10	10	20	50
Knowledge and skills in the design and development of software solutions	5	15	20	10	50
Total %	15	25	30	30	100

Course Calendar (120 Indicative Hours)

Week	Term 4	Term 1	Term 2	Term 3
1	<i>Introduction to HSC</i>	Development and impact of software solutions	Implementation of Software solutions	Developing a Software package
2	Interrelationship between software and hardware	Application of software development applications	Implementation of Software solutions	Trial HSC Exams Task 4 30%
3	Interrelationship between software and hardware	Application of software development applications	Maintenance of Software Solutions	
4	Interrelationship between software and hardware	Design of Software Solutions	Maintenance of Software Solutions	Exam Review
5	Interrelationship between software and hardware	Design of Software Solutions	Task 3 - 30%	Interrelationship between software and hardware
6	Interrelationship between software and hardware	Design of Software Solutions	Developing a Software package	Development and impact of software solutions
7	Interrelationship between software and hardware	Design of Software Solutions	Developing a Software package	Application of software development applications
8	Task 1 - 15%	Task 2: - 25% Year 12 FOCUS WEEK	Developing a Software package	Design of Software Solutions
9	Development and impact of software solutions	Implementation of Software solutions	Developing a Software package	Implementation of Software solutions
10	Development and impact of software solutions	Implementation of Software solutions	Developing a Software package	Developing a Software package
11		Implementation of Software solutions		

Sport, Lifestyle and Recreation

	TASK 1	TASK 2	TASK 3	TASK 4	
Name of task	<i>Aquatics - Water Safety</i>	<i>Games + Sports #1</i>	<i>Sports Injuries and Resistance Training</i>	<i>Games + Sports #2</i>	
Type of task	Theory Test	Practical Review	Topic Task	Practical Review	
Date of task	Term 4 Week 9	Term 1 Week 9	Term 3 Week 4	Term 3 Week 6	
Outcomes assessed	1.3, 3.1, 4.4, 4.5	1.1, 2.3, 5.2, 5.3	2.1, 2.5, 3.2, 3.6	2.3, 5.2, 5.3, 5.5	
Component					Weighting
Knowledge and understanding	20	5	20	5	50
Skills	10	15	10	15	50
Total %	30	20	30	20	100

Course Calendar (120 Indicative Hours)

Week	Term 4	Term 1	Term 2	Term 3
1	<i>Introduction to HSC</i>	Sports Injuries	Resistance Training	Social Perspectives of Games and Sports
2	Aquatics	Sports Injuries	Resistance Training	Trial HSC Exams
3	Aquatics	Sports Injuries	Resistance Training	
4	Aquatics	Sports Injuries	Resistance Training	Task 3 30%
5	Aquatics	Sports Injuries	Resistance Training	Social Perspectives of Games and Sports
6	Aquatics	Sports Injuries	Resistance Training	Task 4 20%
7	Aquatics	Sports Injuries	Resistance Training	Social Perspectives of Games and Sports
8	Aquatics	Year 12 FOCUS WEEK	Resistance Training	Social Perspectives of Games and Sports
9	Task 1 30%	Task 2 20%	Resistance Training	Social Perspectives of Games and Sports
10	Aquatics	Sports Injuries	Revision/ Feedback	Social Perspectives of Games and Sports
11		Sports Injuries		

Textiles and Design

	TASK 1	TASK 2	TASK 3	TASK 4	
Name of task	<i>Major Textiles Project – Designing and Planning</i>	<i>Contemporary Designer Case Study</i>	<i>Major Textiles Project – Development and Management</i>	<i>Trial HSC</i>	
Type of task	Written & Presentation	Written	Report	Exam	
Date of task	Term 4 Week 6	Term 1 Week 2	Term 2 Week 4	Term 3 Weeks 2-3	
Outcomes assessed	H1.3, H2.1, H6.1	H3.1, H3.2, H4.1, H5.1	H1.1, H1.2, H2.2, H3.1, H4.2	H1.3, 3.1, H3.2, H4.1, H5.2, H6.1	
Component					Weighting
Knowledge and understanding of textiles and the textile industry	10	10		30	50
Skills in design, manipulation, experimentation, analysis, manufacture and selection of textiles for specific end purposes using appropriate technologies	15	15	20		50
Total %	25	25	20	20	100

Course Calendar (120 Indicative Hours)

Week	Term 4	Term 1	Term 2	Term 3
1	<i>Introduction to HSC</i>	Major Textile Project	Properties and Performance of Textiles	Revision
2	Major Textile Project	Task 2 25% Design	Properties and Performance of Textiles	Trial HSC Exams Task 4 30%
3	Design	Design	Properties and Performance of Textiles	
4	Design + MTP	Design	Task 3 MTP Report 20%	HSC MTP DUE
5	Design + MTP	Design	Properties and Performance of Textiles	Properties and Performance of Textiles
6	Task 1 Project Proposal 25%	Properties and Performance of Textiles	Australian Textile, Clothing, Footwear and Allied Industries	Australian Textile, Clothing, Footwear and Allied Industries
7	Design + MTP	Properties and Performance of Textiles	Australian Textile, Clothing, Footwear and Allied Industries	Properties and Performance of Textiles
8	Design + MTP	Year 12 FOCUS WEEK	Australian Textile, Clothing, Footwear and Allied Industries	Australian Textile, Clothing, Footwear and Allied Industries
9	Design + MTP	Properties and Performance of Textiles	Australian Textile, Clothing, Footwear and Allied Industries	Revision
10	Australian Textile, Clothing, Footwear and Allied Industries	Properties and Performance of Textiles	Australian Textile, Clothing, Footwear and Allied Industries	Revision
11		Properties and Performance of Textiles		

Visual Arts

	TASK 1	TASK 2	TASK 3	TASK 4	
Name of task	Art Practice	Artworks beyond studio spaces	Body of Work	Trial HSC	
Type of task	Artmaking Presentation & related Written Response	Study of Art Research & In Class Essay	Artmaking Submission & Review	Exam	
Date of task	Term 4 Week 10	Term 2 Week 6	Term 3 Week 1	Term 3 Weeks 2-3	
Outcomes assessed	H1, H2, H3, H4, H7, H8, H9	H7, H8, H10	H1, H2, H3, H4, H5, H6	H7, H8, H9, H10	
Component					Weighting
Artmaking	20		30		50
Critical & Historical Study	10	20		20	50
Total %	30	20	30	20	100

Course Calendar (120 Indicative Hours)

Week	Term 4	Term 1	Term 2	Term 3
1	<i>Introduction to HSC Art</i>	Body of work Review	Case Study 4 Study of Art	Task 3 Artmaking Submission & Review 20%
2	Artmaking strategies, Study of Art	Case Study 2	Body of work development	Trial HSC Exams Task 4 20%
3	Artmaking strategies, Study of Art	Artmaking & Study of Art	Body of work development	
4	Artmaking strategies, Study of Art	Artmaking & Study of Art	Field Trip TBC	Body of work completion
5	Artmaking strategies	Artmaking & Study of Art	Body of work development	Body of work completion
6	Case Study 1 Artmaking strategies	Art Express Excursion	Task 2 In class essay 20%	Body of work review
7	Artmaking strategies Body of work Review & Commencement Plan	Case Study 3 Study of art	Body of work development, Study of Art	HSC NESA B.O.W. SUBMISSION & Art Breakfast Exhibition
8	Body of work Review & Commencement Plan	Year 12 FOCUS WEEK	Body of work development, Study of Art	Case Study 5
9	Body of work Review & Commencement Plan	Body of work development	Body of work development, Study of Art	Study of Art
10	Task 1 Body of Work Process, Presentation and Written Response 20%	Body of work development, Study of Art	Body of work development, Study of Art	Revision
11		Body of work development, Study of Art		

Visual Design

	TASK 1	TASK 2	TASK 3	TASK 4	
Name of task	<i>Character Design</i>	<i>Product Design</i>	<i>Major Project</i>	<i>Design Portfolio</i>	
Type of task	Practical and research	Practical and research	Individual Design Project	Individual Portfolio Review	
Date of task	Term 4 Week 10	Term 1 Week 10	Term 2 Week 10	Term 3 Week 7	
Outcomes assessed	DM1, DM2, DM3, DM4, DM5, DM6, CH1, CH2, CH3, CH4	DM1, DM2, DM3, DM4, DM5, DM6, CH1, CH2, CH3, CH4	DM1, DM3, DM4, DM5 & CH1, CH2	DM1, DM2, DM3, DM4, DM5, DM6	
Component					Weighting
Knowledge, skills & understanding through the making of works in design that lead to & demonstrate conceptual & technical accomplishment	15	15	20	20	70
Knowledge, skills & understanding that lead to increasingly accomplished critical & historical investigations of design	10	10	10		30
Total %	25	25	30	20	100

Course Calendar (120 Indicative Hours)

Week	Term 4	Term 1	Term 2	Term 3
1	<i>Introduction to HSC</i>	Project overview	Project overview	Curated Portfolio
2	Project overview	Adobe Tutorials	Project Brief	Trial HSC Exams
3	Adobe Illustrator tutorials	Adobe Tutorials	Research	
4	Working sketches	Adobe Tutorials	Ghent chart development	Curated Portfolio
5	Project Development	Storyboarding	Development of Brief	Curated Portfolio
6	Project Development	Animation	Project Development	Curated Portfolio
7	Project Development	Animation	Project Development	Task 4 Portfolio Submission 30%
8	Project Development	Year 12 FOCUS WEEK	Project Development	Curated Portfolio
9	Project Development	Animation	Project Development	Curated Portfolio
10	Task 1 Practical and Research 25%	Task 2 Practical and Research 25%	Task 3 Design Project 30%	Curated Portfolio
11		Animation		

Work Studies

	TASK 1	TASK 2	TASK 3	TASK 4	
Name of task	<i>Training Package</i>	<i>Personal Finance</i>	<i>Student Choice</i>	<i>Interview</i>	
Type of task	Own Choice	Test	Series of Activities	Complete an interview for a job	
Date of task	Term 4 Week 8	Term 1 Week 9	Term 2 Week 8	Term 3 Week 4	
Outcomes assessed	2, 5, 7	4, 5, 7, 8, 9	3, 4, 8, 9	1, 2, 3, 4, 5, 6, 7, 8, 9	
Component					Weighting
Knowledge and Understanding	15	5	5	5	30
Skills	10	20	20	20	70
Total %	25	25	25	25	100

Course Calendar (120 Indicative Hours)

Week	Term 4	Term 1	Term 2	Term 3
1	<i>Introduction to HSC</i>	Workplace Communication	Managing Life and Work Commitments	Preparing Job Applications
2	Workplace Communication	Personal Finance	Managing Life and Work Commitments	Trial HSC Exams
3	Workplace Communication	Personal Finance	Managing Life and Work Commitments	
4	Workplace Communication	Personal Finance	Managing Life and Work Commitments	
5	Workplace Communication	Personal Finance	Managing Life and Work Commitments	Task 4 Interview 25% Preparing Job Applications
6	Workplace Communication	Personal Finance	Team Enterprise	Preparing Job Applications
7	Workplace Communication	Personal Finance	Team Enterprise	Preparing Job Applications
8	Task 1 Activities 25%	Year 12 FOCUS WEEK	Task 3 Activities 25%	Preparing Job Applications
9	Workplace Communication	Task 2 Test 25% Personal Finance	Team Enterprise	Preparing Job Applications
10	Workplace Communication	Personal Finance	Team Enterprise	Preparing Job Applications
11		Personal Finance		

2024 HSC ASSESSMENT CALENDAR

TERM 4 2023			TERM 1 2024		
OCTOBER	Wk 1 9-13		FEBRUARY	Wk 1 1-2	30-31 Jan SDDs
	Wk 2 16-20			Wk 2 5-9	Textiles & Design Task 2
	Wk 3 23-27			Wk 3 12-16	
NOVEMBER	Wk 4 30-3		MARCH	Wk 4 19-23	
	Wk 5 6-10	Marine Studies Task 1		Wk 5 26-1	English Extension 1 Task 1 Science Extension Task 1
	Wk 6 13-17	Society & Culture Task 1 Textiles & Design Task 1		Wk 6 4-8	Japanese Beginners Task 2 Society & Culture Task 2
	Wk 7 20-24	Design & Technology Task 1 Industrial Tech Multimedia Task 1 Industrial Tech Timber & F Task 1 Mathematics Standard 1 Task 1 Software Design & Dev. Task 1		Wk 7 11-15	Design & Technology Task 2 English Advanced Task 2 English Standard Task 2 Exploring Early Childhood Task 2
DECEMBER	Wk 8 27-1	Ancient History Task 1 Engineering Studies Task 1 English Advanced Task 1 English Standard Task 1 EAL/D Task 1 English Studies Task 1 Food Technology Task 1 IPT Task 1 Investigating Science Task 1 Japanese Beginners Task 1 Mathematics Advanced Task 1 Mathematics Extension 1 Task 1 Music 1 Task 1 Work Studies Task 1	APRIL	Wk 8 18-22	YEAR 12 FOCUS WEEK Ancient History Task 2 Biology Task 2 Business Studies Task 2 Chemistry Task 2 Drama Task 2 EAL/D Task 2 Economics Task 2 Engineering Studies Task 2 English Studies Task 2 IPT Task 2 Investigating Science Task 2 Mathematics Advanced Task 2 Mathematics Extension 1 Task 2 Mathematics Extension 2 Task 2 Mathematics Standard 2 Task 2 Mathematics Standard 1 Task 2 Physics Task 2 Software Design & Dev. Task 2
	Wk 9 4-8	Business Studies Task 1 Chemistry Task 1 Drama Task 1 Economics Task 1 Exploring Early Childhood Task 1 Mathematics Extension 2 Task 1 Mathematics Standard 2 Task 1 Modern History Task 1 PDHPE Task 1 Photography Task 1 Physics Task 1 Sport, Lifestyle & Rec. Task 1		Wk 9 25-28 Fri 29 Good Friday	Film, Video & Dig Imaging Task 2 Food Technology Task 2 Legal Studies Task 2 Marine Studies Task 2 Modern History Task 2 Music 1 Task 2 Sport, Lifestyle & Rec. Task 2 Work Studies Task 2
	Wk 10 11-15	Biology Task 1 CAFS Task 1 (IRP) Dance Task 1 Film, Video & Dig Imaging Task 1 Legal Studies Task 1 Visual Arts Task 1 Visual Design Task 1		Wk 10 2-5 Mon 1 Apr Easter Mon	Aboriginal Studies Major Project CAFS Task 2 Dance Task 2 English Extension 2 Task 1 History Extension Task 1 Music 1 Task 2 cont. PDHPE Task 2 Photography Task 2 Visual Design Task 2
	Wk 11	SDDs		Wk 11 8-12	

2024 HSC ASSESSMENT CALENDAR

TERM 2 2024		
MAY	Wk 1 30 Apr-3	Monday 29 Apr SDD
	Wk 2 6-10	
	Wk 3 13-17	
	Wk 4 20-24	Aboriginal Studies Task 1 Textiles & Design Task 3
	Wk 5 27-31	Industrial Tech Multimedia Task 2 Industrial Tech Timber & F Task 2 Marine Studies Task 3 Software Design & Dev. Task 3
JUNE	Wk 6 3-7	Biology Task 3 Engineering Studies Task 3 English Extension 1 Task 2 Japanese Beginners Task 3 Physics Task 3 Visual Arts Task 2
	Wk 7 11-14	Monday 10 Jun Public Holiday Business Studies Task 3 Chemistry Task 3 English Studies Task 3 Mathematics Advanced Task 3 Mathematics Standard 2 Task 3 Mathematics Standard 1 Task 3 Society & Culture Task 3
	Wk 8 17-21	Ancient History Task 3 CAFS Task 3 Economics Task 3 EAL/D Task 3 English Advanced Task 3 English Standard Task 3 Food Technology Task 3 Legal Studies Task 3 Mathematics Extension 1 Task 3 Photography Task 3 Work Studies Task 3
	Wk 9 24-28	Dance Task 3 Drama Task 3 Exploring Early Childhood Task 3 Film, Video & Dig Imaging Task 3 IPT Task 3 Investigating Science Task 3 Mathematics Extension 2 Task 2 Modern History Task 3 PDHPE Task 3
JULY	Wk 10 1-5	Aboriginal Studies Task 2 English Extension 2 Task 2 History Extension Task 2 Music 1 Task 3 Science Extension Task 2 Visual Design Task 3

TERM 3 2024		
JULY	Wk 1 23-26 22 Jul SDD	Dance Practical Trial HSC Design & Technology Task 3 English Extension 2 Task 3 Industrial Tech Multimedia Task 3 Industrial Tech Timber & F Task 3 Visual Arts Task 3
	Wk 2 29 -2	TRIAL HSC EXAMINATIONS Aboriginal St. Ancient History Biology Business Studies Chemistry CAFS Dance Design & Technology Drama Economics Engineering Studies English Advanced English Standard EAL/D English Ext 1 English Studies Exploring Early Childhood Food Technology History Extension IT Multimedia IT Timber & Furn. IPT Inv. Science Japanese Beg. Legal Studies Mathematics Adv Mathematics Ext 1 Mathematics Ext 2 Mathematics Std 2 Mathematics Std 1 Modern History Music 1 PDHPE Physics Society & Culture Software Des & Dev Textiles & Design Visual Arts
AUGUST	Wk 3 5-9	
	Wk 4 12-16	Marine Studies Task 4 Science Extension Task 3 Sport, Lifestyle & Rec. Task 3 Work Studies Task 4
	Wk 5 19-23	
	Wk 6 26-30	Photography Task 4 Sport, Lifestyle & Rec. Task 4
SEPTEMBER	Wk 7 2-6	Film, Video & Dig Imaging Task 4 Visual Design Task 4
	Wk 8 9-13	
	Wk 9 16-20	
	Wk 10 23-27	GRADUATION WEEK

