

# WYNDHAM COLLEGE

## HSC ASSESSMENT HANDBOOK 2022





# Table of Contents

## COURSE GUIDE AND ASSESSMENT POLICY

A.	Eligibility for the Award of an HSC .....	2
1.	Study of an Appropriate Pattern of Study .....	2
2.	Complete Courses Satisfactorily .....	2
B.	Assessment Guidelines .....	2
1.	General .....	2
2.	Notification of Tasks .....	3
3.	VET Mandatory Work Placement .....	3
4.	Completion of Tasks .....	3
5.	School Assessments under Examination Conditions .....	4
6.	Procedures and Code of Conduct .....	4
7.	Appeals and Reviews .....	6
8.	Malpractice .....	6
9.	Non-Serious Attempt .....	6
10.	"N" Determinations .....	7
11.	Warnings .....	7
	Sample Warning Letter .....	8
	Student Appeal Form Illness / Misadventure .....	10
	Procedures to Follow if Assessment Tasks are Missed .....	12

## HSC SUBJECT ASSESSMENT SCHEDULES

Aboriginal Studies .....	15
Agriculture .....	16
Ancient History .....	17
Biology .....	18
Business Studies .....	19
Chemistry .....	20
Community and Family Studies .....	21
Dance .....	22
Design and Technology .....	23
Drama .....	24
Economics .....	25
Engineering Studies .....	26
English Advanced .....	27
English Standard .....	28
English as an Additional Language or Dialect .....	29
English Extension 1 .....	30
English Extension 2 .....	31
English Studies .....	32
Exploring Early Childhood .....	33
Film Studies .....	34
Food Technology .....	35
History Extension .....	36
Industrial Technology – Timber and Furnishings .....	37
Information, Processes and Technology .....	38
Investigating Science .....	39
Japanese Beginners .....	40
Legal Studies .....	41
Marine Studies .....	42
Mathematics .....	43
Mathematics Extension 1 .....	44
Mathematics Extension 2 .....	45
Mathematics Standard 1 .....	46
Mathematics Standard 2 .....	47
Modern History .....	48
Music 1 .....	49
Personal Development, Health and Physical Education .....	50
Photography .....	51
Physics .....	52
Society and Culture .....	53
Software, Design and Development .....	54
Sport Lifestyle and Recreation .....	55
Studies of Religion II .....	56
Textiles and Design .....	57
Visual Arts .....	58
Visual Design .....	59
Work Studies .....	60

# *HSC Courses, Vocational Courses and Endorsed Course Guide and Assessment Policy*

---

## **COURSE GUIDE AND ASSESSMENT POLICY**

### **A. ELIGIBILITY FOR THE AWARD OF AN HSC**

#### **1. Study Of An Appropriate Pattern Of Study**

To qualify for the Higher School Certificate students must satisfactorily complete an HSC pattern of study comprising at least 10 units, following on from the Preliminary pattern of study. Both patterns must include:

- at least six units from NESA Developed courses;
- at least two units of a NESA Developed course in English;
- at least three courses of two units value or greater (either NESA Developed or Endorsed courses);
- at least four subjects

To satisfy pattern of study requirements for the Higher School Certificate, a student may count a maximum of six Preliminary units and six HSC units from courses in Science.

#### **2. Complete Courses Satisfactorily**

A student will be considered to have satisfactorily completed a course if, in the Principal's view, there is sufficient evidence the student has:

- (a) followed the course developed or endorsed by the Authority
- (b) applied themselves with diligence and sustained effort to the set tasks and experiences provided in the course by the school
- (c) achieved some or all of the course outcomes
- (d) made a genuine attempt to complete course requirements
- (e) in addition to any other set tasks and experiences in any course, completed assessment tasks that contribute in excess of 50 percent of available marks.
- (f) sat for and made a genuine attempt at examinations

It should be noted that, as a result of absence from a course, the principal may determine that course completion criteria may not be met.

**Students whose attendance is called into question will be required to prove to the principal's satisfaction, following a review of their performance, that they are meeting the course completion criteria.**

### **B. ASSESSMENT GUIDELINES**

#### **1. General**

Assessment tasks indicate achievement over a wide range of syllabus outcomes. Students will receive the following advice about assessment in each course before assessment begins.

- (a) the practical and written tasks, such as tests, assignments and projects, on which their assessments are to be based.
- (b) the weighting to be allocated to each task.

(c) an indication as to when the task will be held.

## 2. Notification Of Tasks

In addition to the schedule of assessment tasks, the college will provide adequate notice of the precise timing of each assessment task. Generally, at least two weeks' notice of the details of a task will be given and any change to the task that may occur.

**NB If a student is absent from school for a day or a session it is the student's responsibility to check if any information relating to an Assessment Task has been communicated.**

## 3. VET Mandatory Work Placement

As with all other courses, students undertaking VET courses may be deemed to have either completed or not completed course requirements. It should be noted that if a student fails to undertake any mandatory work placement component it may be determined that the student has not made a genuine attempt to complete course requirements. In this case the principal can indicate that the course has not been satisfactorily completed and the student may be issued with an "N" determination.

## 4. Completion Of Tasks

NESA hopes that, through the process of continuing assessment, it will be able to reward sustained effort on the part of senior students and sample a wider (and, therefore, more accurate) range of student attainments. A sound performance in assessment tasks over the Preliminary course also helps to prepare students for the actual HSC which will modify their school assessment. It should be realised that the assessment program places a responsibility upon students to complete the assessment tasks. At Wyndham College the following policies towards missed tasks have been determined.

- i. Students who **complete** all aspects of the assessment task and **submit it** on or **before** the due date are eligible for the full mark allocated for the task.
- ii. Students who **attend** an assessment task which is to be completed at school are eligible for the full mark allocated for the task.
- iii. Students who **fail to submit** an assessment task by the due date **must be given zero** if they have no valid reason.
- iv. Students who **fail to attend** on the specified date an assessment task which is to be completed at school **must be given zero** if they have no valid reason.
- v. Students who fail to submit an assessment task by the due date, but who have a valid reason (such as sickness or approved leave validated by appropriate documentation) are eligible for the full mark allocated to the task if they have completed the task. A medical certificate may not be accepted as excusing late submission of tasks **where the task was issued well in advance of the illness** and the medical certificate shows that the student was not incapacitated for a large part of that time. You should submit whatever progress work has been completed at that time e.g. drafts, plans, rough work etc. This will be assessed by the teacher and may be awarded marks. PLEASE NOTE: YOU MUST SUBMIT THE TASK ON THE DAY YOU RETURN TO SCHOOL.
- vi. Students who **fail to attend** an assessment task which is to be completed at school, but who **have a valid reason** (e.g. sickness) must be given an opportunity to do the task or an equivalent task at a later date. In exceptional circumstances it may be necessary to give a mark

based on the student's other assessment tasks. These students are eligible for the **full mark** allocated to the task.

- vii. Students who **submit** an **incomplete** task on or before the due date are to be allocated a mark. This mark is to be based on the proportion of the task completed. The task does **not** automatically receive a zero mark. As an example, if the task had six equally weighted components and a student attempted only three of these, that student would be eligible for up to 50% of the mark allocated to the task.
- viii. If a student believes factors beyond their control, e.g. sickness or family misfortune, have affected their ability to do their best on a task they may apply for an extension by seeing the appropriate Head Teacher at least 24 hours before the due date. **NO EXTENSION WILL BE GRANTED TO APPLICATIONS RECEIVED ON THE DAY A TASK IS DUE.**
- ix. If a student submits a task which is deemed to be a non-serious attempt by the teacher, then a zero mark will be awarded.
- x. During examination sessions, any portable electronic devices, including iPods, are not permitted and only NESA approved equipment, such as calculators, may be used.
- xi. Hard copies (not computer files) of written task responses are to be submitted unless the task stipulates otherwise. It is the student's responsibility to have work printed in time for submission.
- xii. Printing of major works can be organised through the school provided it is submitted one week before the due date.
- xiii. Computer / Printer failure cannot be used as a reason to submit work late.

**Where a student is going to be absent, the student or parent/guardian should contact the Head Teacher or class teacher if possible, before the task takes place. If unexpectedly absent on the day of the task the student should phone the school and inform the Deputy Principal, or the Head Teacher of the subject. Workplacement is not a valid reason to submit work late. All students on Workplacement must make arrangements to submit the work by the due date.**

## **5. School Assessments under Examination Conditions**

In school assessments are often carried out under examination conditions. Wyndham College uses examination procedures modelled on those used for NESA external examinations. The majority of students meet expectations. Students need to be aware of the examination Procedures and Code of Conduct. They ensure the smooth running of examinations and an environment in which all students are able to respond to the best of their ability without disruption from others.

## **6. Procedures and Code of Conduct**

- Wear school uniform. This assists the supervisor identify you as a student of this campus. Bring all necessary equipment in a CLEAR ZIP LOCK BAG or CLEAR PENCIL CASE. A black or blue pen, pencil, pencil sharpener, eraser, highlighter and ruler marked in mm and cm are allowed in ALL examinations.
- For examinations requiring a calculator use only a NESA approved calculator. Make sure it is fully charged.
- You may bring a clear bottle of water into the examination; you cannot leave to refill it.

- Supervisors have the right to inspect any equipment you bring into the examination room.
- Arrive at the exam room 20 minutes before examination start time. It can take some time to find your seat. A seating map will be placed on the outside of the HALL to help you.
- Organise your transport to be on time for examinations.
- If you arrive late, entry into the examination will be at the supervisors' discretion.
- Sit at your allocated desk. Do not swap name place cards.
- Remove your watch and place it in clear view on the desk in front of you. It cannot be a programmable watch.
- When instructed, thoroughly check your examination paper – it is possible that pages are missing or there has been an error in the printing.
- Reading time is for reading only. NO writing or highlighting may be undertaken during reading time.
- Read instructions carefully, noting requirements for the use of answer booklets.
- Supervisors are NOT able to interpret questions.
- Write your name or NESA number, as instructed by the supervisor, on every page of your answer booklet.
- Write in black or blue pen, preferably black.
- Stop writing immediately you are instructed to do so.
- Arrange completed answers according to supervisor's instructions.
- Do not remove examination papers from the examination room.
- Only leave the examination room when the supervisor says it is OK to do so. Leave immediately, when instructed to do so.
- If you are ill or a problem exists during the examination notify the supervisor immediately, by quietly raising your hand.

**Students must NOT:**

- Borrow equipment.
- Take mobile phones or programmable watches or other electronic devices into the examination room.
- Speak or communicate to anyone other than a supervisor during the examination. Behave in a manner that is likely to disturb or disrupt other students.

- Smoke, eat or come to examinations under the influence of alcohol or illegal drugs.
- Try to cheat or participate in any form of malpractice. Cheating or malpractice may result in zero marks being awarded and an 'N' determination issued.

If a student breaches the conduct of code during the examination, the school will use a Yellow/Red Card notification system. Students will receive one official warning - a Yellow Card placed on their desk. Should the behaviour continue the student will be removed from the examination venue (Red Card) and sent to the Deputy Principal. This will result in disciplinary action.

**Yellow Card:** THIS IS A WARNING. You have been observed breaking the code of conduct. DO NOT ATTEMPT TO DISCUSS THIS NOW. The next step will be a Red Card and removal.

**Red Card:** You have been observed breaking the code of conduct. You are to leave the examination room IMMEDIATELY without disrupting others. Please report immediately to the Deputy Principal.

#### **If you are ill or have a major problem on the morning of the examination:**

Notify your Year Deputy or the front office (9208 7100)) as soon as possible, and make an Illness/misadventure application as soon as you return to school.

Note: Illness/misadventure appeals require a Medical Certificate.

Rescheduled examinations must take DURING the examination period unless there are extenuating circumstances.

### **7. Appeals And Reviews**

Where students are dissatisfied with any aspect of the assessment procedure, they should in the first instance approach the Head Teacher of the subject concerned. If the problem cannot be resolved at the faculty level, it may be referred to the Assessment Review Committee (Principal, Deputy of the Year not concerned and the Head Teacher Secondary Studies), who will convene to consider the particular case. Queries about the marks awarded for a task CAN ONLY be considered if made when the task is handed back to the class.

### **8. Malpractice**

Students who cheat in any way, including plagiarism, make a non-serious attempt, or truant for an assessment task will score zero for the task. In addition, the task will be recorded as a non-attempt in terms of the requirement that students complete tasks which must total more than 50% of available marks. Note: **Cheating occurs when a student attempts to gain an unfair advantage.** The Principal will make all such judgements in consultation with the Review Committee. Plagiarism is the submitting of work that is not wholly your own, e.g. submitting slabs of text from the internet or a textbook.

### **9. Non-Serious Attempt**

Students studying a Preliminary course must make a genuine attempt to complete course requirements. It is a matter for the teacher's professional judgment to determine whether a student has made a genuine attempt to complete these requirements.

Students who do not make a genuine attempt **must be given zero** and will be required to complete a substitute task.

In the case of competency-based courses, where a student has not successfully completed any units of competency, it is a matter for the teacher's professional judgment to determine whether the attempts made by the student to complete the course are genuine.

Where students are studying a Preliminary course that includes a requisite examination, students must sit for and make a genuine attempt at the examination. If it is determined that a student has not made a genuine attempt to complete course requirements, the principal must indicate on the appropriate documentation that the course has not been satisfactorily completed.

## 10. "N" Determinations

NESA has delegated to principals the authority to determine if students seeking the award of the Higher School Certificate at their school have satisfactorily completed each Developed and / or Endorsed Course in which they are enrolled in accordance with the requirements issued by NESA.

Principals therefore will determine if there is sufficient evidence that each student has applied themselves with diligence and sustained effort to the set tasks and experiences provided in the course by the school.

Principals may determine an appropriate attendance pattern(s) that will allow each student to achieve the outcomes of each course being studied. **Principals may determine that, as a result of absence, the course completion criteria may not be met.** Clearly, absences will be regarded seriously by principals who will give students early warning of the consequences of such absences. Warning letters will relate the student's absence to the non-completion of course requirements.

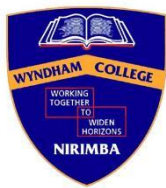
## 11. Warnings

If at any time it appears that a student is at risk of being given an "N" (No completion of course requirements) determination in any course, including VET courses, the principal will warn the student as soon as possible and advise the parent or guardian (if the student is under 18 years of age) in writing. This warning will be given in time for the problem to be corrected and will provide advice about the possible consequences of an "N" determination in a course on Higher School Certificate eligibility.

Students who have not complied with the requirements for satisfactory completion of a course at the time of finalizing assessments cannot be regarded as having satisfactorily completed the course.

## Sample Warning Letter

---



# WYNDHAM COLLEGE

Nirimba Education Precinct  
Eastern Road  
QUAKERS HILL NSW 2763

PHONE: 02 9208 7100  
FAX: 02 9208 7199

### NON-COMPLETION OF A HIGHER SCHOOL CERTIFICATE COURSE OFFICIAL WARNING

Student's name:

Date:

Dear

I am writing to advise that your son / daughter is in danger of not meeting the course completion criteria for the Higher School Certificate course.

The Board of Studies requires schools to issue students with official warnings in order to give them the opportunity to redeem themselves. Please regard this letter as the first official warning we have issued concerning the above course/task. A minimum of two course specific warnings must be issued prior to a final 'N' determination being made for a course.

#### Course Completion Criteria

Where it is determined that a student has not met the Course Completion Criteria, they place themselves at risk of receiving an 'N' (non-completion of course) determination. An 'N' determination will mean that the course will not be listed on the student's Record of Achievement. In Year 12 students must make a genuine attempt at assessment tasks that contribute in excess of 50% of available marks. Completion of tasks worth exactly 50% is not sufficient; tasks worth in excess of 50% must be completed.

The satisfactory completion of a course requires principals to have sufficient evidence that the student has met the following criteria.

- a) Followed the course developed or endorsed by the Board.
- b) Applied themselves with diligence and sustained effort to the set tasks and experiences provided in the course by the school.
- c) Achieved some or all of the outcomes.

To date, your son / daughter has not satisfactorily met (a), (b) or (c) of the course completion criteria.

The following table lists those tasks, requirements or outcomes not yet completed or achieved, and/or for which a genuine attempt has not been made. In order for your son / daughter to satisfy the course completion criteria, the following tasks, requirements or outcomes need to be satisfactorily completed/achieved.

<b>Task name</b> <b>Course requirement</b> <b>Course outcome</b>	<b>Date task</b> <b>initially due</b> <b>(if applicable)</b>	<b>Action required by student</b>	<b>Date to be</b> <b>completed by (if</b> <b>applicable)</b>

**Task Description:**  
**assessment.**

**This task is worth**

**% of the total course**

Please discuss this matter with your  
or clarification is needed.

and contact the school if further information

_____	_____	_____
Class Teacher	Head Teacher	Deputy Principal

*Please detach this section and return to the school*

# **REQUIREMENTS FOR THE SATISFACTORY COMPLETION OF A HIGHER SCHOOL CERTIFICATE COURSE**

Student's name:

Course:

Date:

I have received the letter indicating that my son / daughter is in danger of not having satisfactorily completed the course listed above.

I am aware that this course may not appear on his / her Record of Achievement.

I am also aware that the 'N' determination will make my son / daughter ineligible for the award of the Higher School Certificate.

Parent/Caregiver's signature \_\_\_\_\_ Date \_\_\_\_\_

Student's signature \_\_\_\_\_ Date \_\_\_\_\_



**GIVEN NAME**

**TASK ISSUE DATE** \_\_\_\_\_ **EXAM OR TASK DUE DATE** \_\_\_\_\_

☐ Illness      **MUST BE ACCOMPANIED BY A MEDICAL CERTIFICATE**  
☐ Misadventure  
☐ Other \_\_\_\_\_

- ☐ Absent from assessment task, or absent when an assessment task was due (due to illness or exceptional circumstance)
- ☐ Special consideration (due to illness/misadventure/exceptional circumstances leading up to an assessment task, or on the day of an assessment task)

---

---

---

☐ Medical Certificate from Dr. \_\_\_\_\_ Dated: \_\_\_\_\_

☐ Supporting letter from my parent/carer

☐ Other (please describe) \_\_\_\_\_

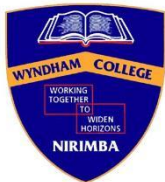
Signature Parent/Caregiver: \_\_\_\_\_ Date: \_\_\_\_\_

---

---

\_\_\_\_\_  
Principal's Signature and Date

☐ Upheld ☐ Denied



# STUDENT APPEAL FORM

Attach copies of all evidence and return to the Front Office - no later than 2 working days after you have been given the decision regarding your Illness/Misadventure form.

Student Details	Type of Task
Name: _____ Connect Group: _____ Course: _____ Teacher: _____ Task Due Date: _____ Date Submitted / Completed: _____ Home Address: _____ _____ _____ _____ Parent / Guardian Name: _____ _____ Contact Number: _____ Evidence to support appeal: (List documents attached)	<input type="checkbox"/> Hand in <input type="checkbox"/> Exam / Test <input type="checkbox"/> Oral / Performance <input type="checkbox"/> Work Placement <input type="checkbox"/> Other: _____ _____  This form is to explain why you wish to appeal the decision of your Illness Misadventure request: <input type="checkbox"/> Process not followed correctly <input type="checkbox"/> Other: _____ _____ _____

## Student Comment

Outline the reason for your appeal:

.....

.....

.....

.....

.....

\_\_\_\_\_  
Student signature & date

Date appeal form received from student:

\_\_\_\_\_

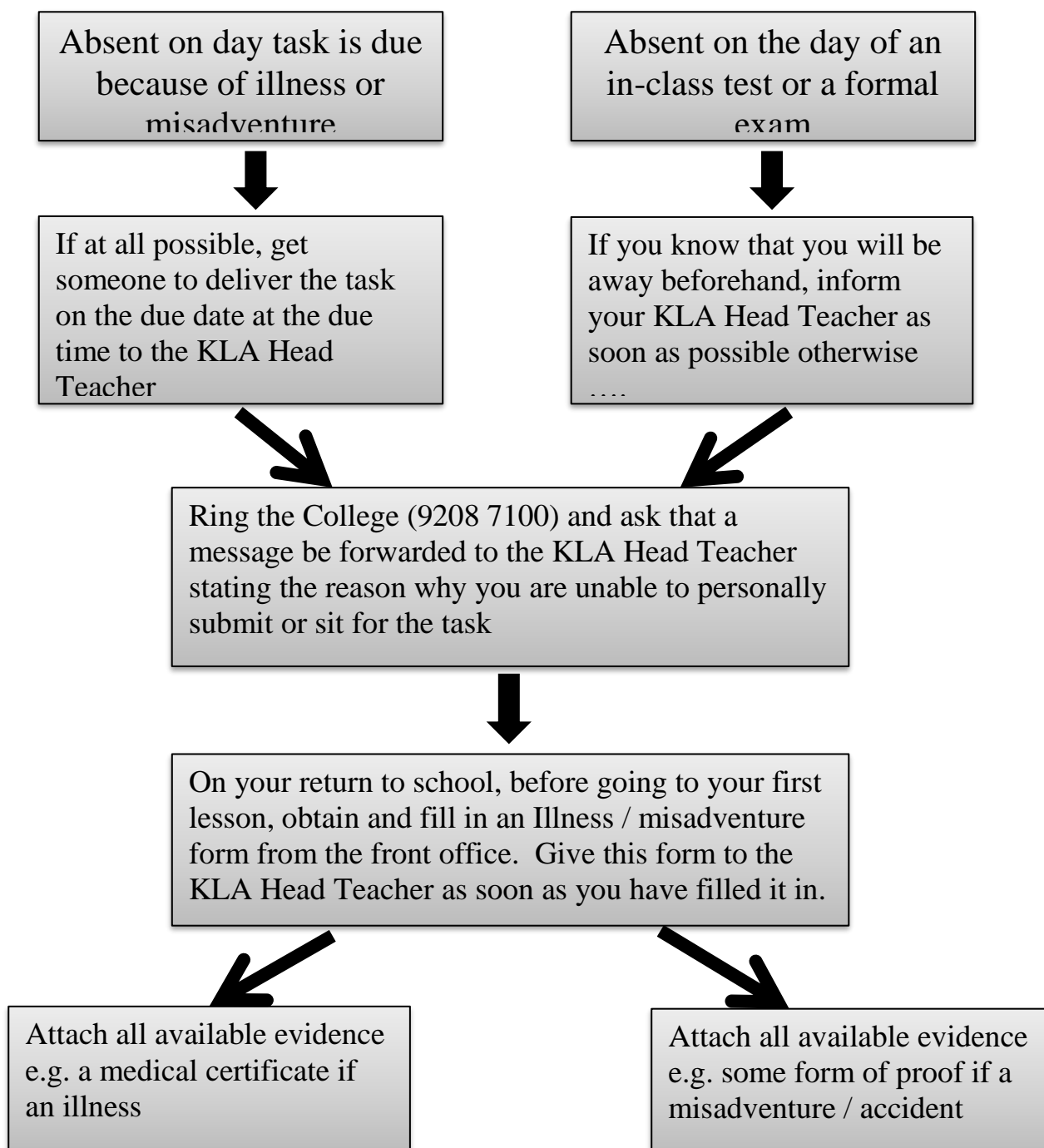
\_\_\_\_\_  
Appeal Committee date

☐ Upheld ☐ Denied

## *Procedures to Follow if Assessment Tasks are Missed*

---

### **Assessment procedures to follow when:**



# **HSC Assessment Schedules**



## Aboriginal Studies

	Major Project	TASK 1	TASK 2	TASK 3	
Name of task	<b>MAJOR PROJECT</b>	<b><i>Social Justice and Human Rights Issues</i></b>	<b><i>Social Justice and Human Rights Issues</i></b>	<b><i>Trial HSC</i></b>	
Type of task	Research Project	Research & Structured responses	Research & In-class responses	Exam	
Date of task	<b>Term 1 Week 10</b>	<b>Term 2 Week 4</b>	<b>Term 2 Week 10</b>	<b>Term 3 Weeks 2-3</b>	
Outcomes assessed	H4.1, H4.2, H4.3	H1.1, H1.2, H1.3, H3.1, H3.2, H3.3	H1.1, H1.2, H1.3, H3.1, H3.2, H3.3	H1.1, H1.2, H1.3, H3.1, H3.2, H3.3	
<b>Component</b>					<b>Weighting</b>
Knowledge & understanding of course content.	5	10	5	20	<b>40</b>
Investigating analysis, synthesis & evaluation of information from a variety of sources and perspectives	15		5	5	<b>25</b>
Research & inquiry methods	15			5	<b>20</b>
Communication of information, ideas and issues in appropriate forms	5	5	5		<b>15</b>
<b>Total %</b>	<b>40</b>	<b>15</b>	<b>15</b>	<b>30</b>	<b>100</b>

**Major Project includes: three ( 3 ) notified submission dates to observe, providing for feedback and verification of progress, as required by NES A Final submission of Project.**

## Course Calendar (120 Indicative Hours)

Week	Term 4	Term 1	Term 2	Term 3
<b>1</b>	<i>Introduction to HSC</i>		Social Justice/ Comparative Study 1	Heritage and Identity or Land
<b>2</b>	Project Research/Inquiry	Project Research/Inquiry	Social Justice/ Comparative Study 1	<b>Task 4 - Trial HSC 30%</b>
<b>3</b>	Project Research/Inquiry	Project Research/Inquiry	Social Justice/ Comparative Study 1	<b>Trial HSC</b>
<b>4</b>	Project Research/Inquiry	Project Research/Inquiry	<b>Task 2 - 15%</b>	Heritage and Identity or Land
<b>5</b>	Project Research/Inquiry	Social Justice and HR, global perspective	Social Justice/ Comparative Study 2	Heritage and Identity or Land
<b>6</b>	Project Research/Inquiry	Social Justice and HR, global perspective	Social Justice/ Comparative Study 2	Heritage and Identity or Land
<b>7</b>	Project Research/Inquiry	Social Justice and HR, global perspective	Social Justice/ Comparative Study 2	Heritage and Identity or Land
<b>8</b>	Project Research/Inquiry	<b>Year 12 FOCUS WEEK</b>	Social Justice/ Comparative Study 2	Heritage and Identity or Land
<b>9</b>	Project Research/Inquiry	Social Justice and HR, global perspective	Heritage and Identity or Land	Heritage and Identity or Land
<b>10</b>	Project Research/Inquiry	<b>Task 1 - 40%</b>	<b>Task 3 - 15%</b>	Revision
<b>11</b>	Project Research/Inquiry	Social Justice/ Comparative Study 1		

## Agriculture

	TASK 1	TASK 2	TASK 3	TASK 4	
Name of task	Practical Test	Farm Product Study	Elective Report	Trial HSC	
Type of task	Practical test	Report	Research report	Examination	
Date of task	Term 4 Week 8	Term 1 Week 8	Term 2 Week 8	Term 3 Week 2-3	
Outcomes assessed	H1.1, H2.1, H2.2	H3.1, H3.2, H3.3, H3.4	H3.4, H4.1, H5.1	H1.1, H2.1, H2.2, H3.4, H5.1	
Component					Weighting
Knowledge and understanding of course content	10	5	10	15	40
Knowledge and understanding and skills required to manage agricultural production systems	15	5	5	15	40
Skills in effective research, experimentation and communication		5	15		20
<b>Total %</b>	<b>20</b>	<b>20</b>	<b>30</b>	<b>30</b>	<b>100</b>

## Course Calendar (120 Indicative Hours)

Week	Term 4	Term 1	Term 2	Term 3
1	Plant/animal production		Farm Product Study	Elective
2	Plant/animal production	Plant/animal production	Farm Product Study	<b>Task 4 - Trial HSC 30%</b>
3	Plant/animal production	Plant/animal production	Elective	<b>Trial HSC</b>
4	Plant/animal production	Plant/animal production	Elective	Plant/animal production
5	Plant/animal production	Farm Product Study	Elective	Plant/animal production
6	Plant/animal production	Farm Product Study	Elective	Plant/animal production
7	Plant/animal production	Farm Product Study	Elective	Plant/animal production
8	<b>Task 1 - 20%</b>	<b>Task 2 - 20%</b> <b>Year 12 FOCUS WEEK</b>	<b>Task 3 - 30%</b>	Revision
9	Plant/animal production	Farm Product Study	Elective	Revision
10	Plant/animal production	Farm Product Study	Elective	Revision
11	Plant/animal production	Farm Product Study		

## Ancient History

	TASK 1	TASK 2	TASK 3	TASK 4	
Name of task	<b>Cities of Vesuvius: Pompeii &amp; Herculaneum</b>	<b>Historical Period New Kingdom Egypt</b>	<b>Spartan Society: to the Battle of Leuctra 371 BC</b>	<b><i>Trial HSC</i></b>	
Type of task	Source Bank Annotations & Analysis	In-Class Essay	Historical Analysis: Contentious Perspectives Folio	Exam	
Date of task	<b>Term 4 Week 8</b>	<b>Term 1 Week 8</b>	<b>Term 2 Week 8</b>	<b>Term 3 Week 2 &amp; 3</b>	
Outcomes assessed	AH12-6 AH12-7 AH12-9	AH12-1 AH12-2 AH12-3 AH12-5 AH12-9	AH12-4, AH12-6 AH12-8, AH12-9	All outcomes	
<b>Component</b>					<b>Weighting</b>
Knowledge and understanding of the course content	5	10	5	20	<b>40</b>
Historical skills in the analysis and evaluation of sources and interpretations	5		10	5	<b>20</b>
Historical inquiry and research	5	5	10		<b>20</b>
Communication of historical understanding in appropriate forms	5	5	5	5	<b>20</b>
<b>Total %</b>	<b>20</b>	<b>20</b>	<b>30</b>	<b>30</b>	<b>100</b>

## Course Calendar (120 Indicative Hours)

Week	Term 4	Term 1	Term 2	Term 3
<b>1</b>	Cities of Vesuvius Survey		Hatshepsut	Sparta
<b>2</b>	Cities of Vesuvius	New Kingdom Egypt + Hatshepsut Survey	Hatshepsut	<b>Task 4 Trial HSC 30%</b>
<b>3</b>	Cities of Vesuvius	New Kingdom Egypt	Hatshepsut	<b>Trial HSC</b>
<b>4</b>	Cities of Vesuvius	New Kingdom Egypt	Sparta	Sparta
<b>5</b>	Cities of Vesuvius	New Kingdom Egypt	Sparta	Cities of Vesuvius
<b>6</b>	Cities of Vesuvius	New Kingdom Egypt	Sparta	Cities of Vesuvius
<b>7</b>	Cities of Vesuvius	New Kingdom Egypt	Sparta	Revision – New Kingdom Egypt
<b>8</b>	<b>Task 1 – 20%</b>	<b>Task 2 – 20% Year 12 FOCUS WEEK</b>	<b>Task 3 – 30%</b>	Revision – New Kingdom Egypt/ Hatshepsut
<b>9</b>	Cities of Vesuvius	Hatshepsut	Sparta	Revision – Hatshepsut
<b>10</b>	Cities of Vesuvius	Hatshepsut	Sparta	Revision - Sparta
<b>11</b>	Cities of Vesuvius	Hatshepsut		

## Biology

	<b>TASK 1</b>	<b>TASK 2</b>	<b>TASK 3</b>	<b>TASK 4</b>	
Name of task	<b><i>Depth Study</i></b>	<b><i>Module Review</i></b>	<b><i>Practical</i></b>	<b><i>Trial HSC</i></b>	
Type of task	Depth Study/Quiz	Test	Practical/ Data analysis	Exam	
Date of task	<b>Term 4 Week 9</b>	<b>Term 1 Week 8</b>	<b>Term 2 Week 5</b>	<b>Term 3 Week 2 &amp; 3</b>	
Outcomes assessed	BIO11/12-3 BIO11/12-4 BIO11/12-6 BIO11/12-7 BIO12-12	BIO11/12-2 BIO11/12-1 BIO11/12-3 BIO12-14	BIO11/12-1 BIO11/12-2 BIO11/12-4 BIO11/12-7 BIO12-15	BIO11/12-2 BIO11/12-1 BIO11/12-4 BIO11/12-7 BIO11/12-6 BIO 12-12 BIO12-13 BIO 12-14 BIO12-15	
<b>Component</b>					<b>Weighting</b>
Skills in Working Scientifically	15	5	10	15	<b>50</b>
Knowledge and Understanding	15	15	10	15	<b>50</b>
<b>Total %</b>	<b>30</b>	<b>20</b>	<b>20</b>	<b>30</b>	<b>100</b>

## Course Calendar (120 Indicative Hours)

<b>Week</b>	<b>Term 4</b>	<b>Term 1</b>	<b>Term 2</b>	<b>Term 3</b>
<b>1</b>	<i>Introduction to HSC</i>		Module 7-Infectious Diseases	Module 8 Non-infectious Diseases
<b>2</b>	Introduce HSC Module Module 5 Heredity	Module 6-Genetic Change	Module 7-Infectious Diseases	<b>Task 4 Trial HSC 30%</b>
<b>3</b>	Module 5 Heredity	Module 6-Genetic Change	Module 7-Infectious Diseases	<b>Trial HSC</b>
<b>4</b>	Module 5 Heredity	Module 6-Genetic Change	Module 7-Infectious Diseases	Module 8 Non-infectious Diseases
<b>5</b>	Module 5 Heredity	Module 6-Genetic Change	<b>Task 3 – 30%</b>	Module 8 Non-infectious Diseases
<b>6</b>	Module 5 Heredity	Module 6-Genetic Change	Module 8 Non-infectious Diseases	Trial HSC Revision
<b>7</b>	Module 5 Heredity	Module 6-Genetic Change	Module 8 Non-infectious Diseases	Trial HSC Revision
<b>8</b>	Module 5 Heredity	<b>Task 2 – 20% Year 12 FOCUS WEEK</b>	Module 8 Non-infectious Diseases	HSC Revision
<b>9</b>	<b>Task 1 – 20%</b>	Module 7-Infectious Diseases	Module 8 Non-infectious Diseases	Trial HSC Revision
<b>10</b>	Module 6-Genetic Change	Module 7-Infectious Diseases	Module 8 Non-infectious Diseases	Trial HSC Revision
<b>11</b>	Module 6-Genetic Change	Module 7-Infectious Diseases		

## Business Studies

	<b>TASK 1</b>	<b>TASK 2</b>	<b>TASK 3</b>	<b>TASK 4</b>	
Name of task	<i>Operations contemporary business issues and case study research</i>	<i>Finance</i>	<i>Marketing and Finance: Business report</i>	<i>Trial HSC</i>	
Type of task	Extended written response	Topic test: Multiple choice and short answer	Written response	Exam	
Date of task	<b>Term 4 Week 9</b>	<b>Term 1 Week 8</b>	<b>Term 2 Week 8</b>	<b>Term 3 Weeks 2-3</b>	
Outcomes assessed	H5, H6, H7	H9, H10	H2, H6, H8	H1, H3, H4, H9	
<b>Component</b>					<b>Weighting</b>
Knowledge & understanding of course content	5	15	5	15	<b>40</b>
Stimulus-based skills		10		10	<b>20</b>
Inquiry based research	10		10		<b>20</b>
Communication of business information ideas and issues in appropriate forms	5	5	5	5	<b>20</b>
<b>Total %</b>	<b>20</b>	<b>30</b>	<b>20</b>	<b>30</b>	<b>100</b>

## Course Calendar (120 Indicative Hours)

<b>Week</b>	<b>Term 4</b>	<b>Term 1</b>	<b>Term 2</b>	<b>Term 3</b>
<b>1</b>	<i>Introduction to HSC</i>		Marketing	Human Resources
<b>2</b>	Operations	Finance	Marketing	<b>Task 4 Trial HSC 30%</b>
<b>3</b>	Operations	Finance	Marketing	<b>Trial HSC</b>
<b>4</b>	Operations	Finance	Marketing	Human Resources
<b>5</b>	Operations	Finance	Marketing	Human Resources
<b>6</b>	Operations	Finance	Marketing	Human Resources
<b>7</b>	Operations	Finance	Marketing	Human Resources
<b>8</b>	Operations	<b>Task 2 30% Year 12 FOCUS WEEK</b>	<b>Task 3 - 20%</b>	Human Resources
<b>9</b>	<b>Task 1 20%</b>	Finance	Human Resources	Human Resources
<b>10</b>	Finance	Finance	Human Resources	Revision
<b>11</b>	Finance	Marketing		

## Chemistry

	TASK 1	TASK 2	TASK 3	TASK 4	
Name of task	Depth Study	Practical Task	Module Task	Trial HSC	
Type of task	Depth Study-Scientific Research	Practical-Scientific Skills	Module Test	Exam	
Date of task	Term 1 Week 2	Term1 Week 8	Term 2 Week 7	Term 3 Week 2 & 3	
Outcomes assessed	CH11/12-2 CH11/12-1 CH11/12-4 CH11/12-7 CH12-15	CH1/12-2 CPH11/12-5 CH11/12-4 CH11/12-7 CH12-13	CH11/12-1 CH11/12-2 CH11/12-4 CH11/12-6 CH11/12-7	CH11/12-2 CH11/12-4 CH11/12-4 CH12-12 CH12-13 CH12-14 CH12-16	
Component					Weighting
Skills in Working Scientifically	15	5	15	15	50
Knowledge and Understanding	15	15	5	15	50
Total %	30	20	20	30	100

## Course Calendar (120 Indicative Hours)

Week	Term 4	Term 1	Term 2	Term 3
1	Introduction to HSC		Module 7 Organic Chemistry	Module 8 Applying Chemical Ideas
2	HSC Course Introduced Module 5-Equilibrium and Acid Reaction	Task 1 – 30%	Module 7 Organic Chemistry	Task 4 Trial HSC 30%
3	Module 5 Equilibrium and Acid Reaction	Module 6 Acid/Base Reaction	Module 7 Organic Chemistry	Trial HSC
4	Module 5 Equilibrium and Acid Reaction Depth Study Introduced	Module 6 Acid/Base Reaction	Module 7 Organic Chemistry	Module 8 Applying Chemical Ideas
5	Module 5 Equilibrium and Acid Reaction	Module 6 Acid/Base Reaction	Module 8 Applying Chemical Ideas	Module 8 Applying Chemical Ideas
6	Module 5 Equilibrium and Acid Reaction	Module 7 Organic Chemistry	Module 8 Applying Chemical Ideas	Module 8 Applying Chemical Ideas
7	Module 5 Equilibrium and Acid Reaction	Module 7 Organic Chemistry	Module 8 Applying Chemical Ideas	HSC Revision
8	Module 5 Equilibrium and Acid Reaction	Task 2 20% Year 12 FOCUS WEEK	Module 8 Applying Chemical Ideas	HSC Revision
9	Module 6 Acid/Base Reaction	Module 7 Organic Chemistry	Module 8 Applying Chemical Ideas	HSC Revision
10	Module 6 Acid/Base Reaction	Module 7 Organic Chemistry	Task 3 – 20%	HSC Revision
11	Module 6 Acid/Base Reaction	Module 7 Organic Chemistry		

## Community and Family Studies

	<b>TASK 1</b>	<b>TASK 2</b>	<b>TASK 3</b>	<b>TASK 4</b>	
Name of task	<i>Independent Research Project</i>	<i>Groups in Context</i>	<i>Parenting and Caring</i>	<i>Trial HSC</i>	
Type of task	Research	Investigation	Case Study	Exam	
Date of task	<b>Term 4 Week 11</b>	<b>Term 1 Week 10</b>	<b>Term 2 Week 8</b>	<b>Term 3 Weeks 2-3</b>	
Outcomes assessed	H4.1, H4.2	H2.2, H3.3, H6.2	H1.2, H2.1, H2.3, H3.2, H5.2	H1.1 to H6.1	
<b>Component</b>					<b>Weighting</b>
Knowledge and understanding of course content	5	10	15	15	<b>45</b>
Skills in critical thinking, research methodology, analysing and communicating	15	10	15	15	<b>55</b>
<b>Total %</b>	<b>20</b>	<b>20</b>	<b>30</b>	<b>30</b>	<b>100</b>

## Course Calendar (120 Indicative Hours)

<b>Week</b>	<b>Term 4</b>	<b>Term 1</b>	<b>Term 2</b>	<b>Term 3</b>
<b>1</b>	<i>Introduction to HSC</i>		Parenting and Caring	Social Impact of Technology
<b>2</b>	Research Methodology	Groups in Context	Parenting and Caring	<b>Task 4 Trial HSC 30%</b>
<b>3</b>	Research Methodology	Groups in Context	Parenting and Caring	<b>Trial HSC</b>
<b>4</b>	Research Methodology	Groups in Context	Parenting and Caring	Social Impact of Technology
<b>5</b>	Research Methodology	Groups in Context	Parenting and Caring	Social Impact of Technology
<b>6</b>	Research Methodology	Groups in Context	Parenting and Caring	Social Impact of Technology
<b>7</b>	Research Methodology	Groups in Context	Parenting and Caring	Social Impact of Technology
<b>8</b>	Research Methodology	<b>Year 12 FOCUS WEEK</b>	<b>Task 3 - 30%</b>	Social Impact of Technology
<b>9</b>	Research Methodology	Groups in Context	Social Impact of Technology	Social Impact of Technology
<b>10</b>	<b>Task 1 - 20%</b>	<b>Task 2 - 20%</b>	Social Impact of Technology	Revision
<b>11</b>	Groups in Context	Groups in Context		

## Dance

	<b>TASK 1</b>	<b>TASK 2</b>	<b>TASK 3</b>	<b>TASK 4</b>	
Name of task	<b>Core Appreciation + Core Performance</b>	<b>Dance as an Artform - Core Task Performance &amp; Composition</b>	<b>Major Study</b>	<b>Trial HSC</b>	
Type of task	Written Task on <b>Terrain</b> (by Frances Rings) Core Performance Dance Interview Journal	Performance of Composition, Journal, Interview/ elaboration	Progress submission of 1. Major Study in Dance/ Film/ Composition 2. Written component and Journal 3. Discussion	Exam	
Date of task	<b>Term 4 Week 10</b>	<b>Term 1 Week 10</b>	<b>Term 2 Week 9</b>	<b>Term 3 (Written) Weeks 2-3 (Practical) Weeks 1-2</b>	
Outcomes assessed	H4.1, H4.2, H4.3, H4.4, H4.5	H2.1, 2.2, 2.3, 2.4 or H3.1, 3.2, 3.3, 3.4 or H4.1, 4.2, 4.3, 4.4	H2.1, 2.2, 2.3, H3.1, 3.2, 3.3	H2.1, 2.2, 2.3, H3.1, 3.2, 3.3, 3.4, H 4.1, 4.2, 4.3, 4.4, 4.5	
<b>Component</b>					<b>Weighting</b>
<b>Performance</b>	10			10	<b>20</b>
<b>Composition</b>		15		5	<b>20</b>
<b>Appreciation</b>	15			5	<b>20</b>
<b>Major Study</b>			30	10	<b>40</b>
<b>Total %</b>	<b>25</b>	<b>15</b>	<b>30</b>	<b>30</b>	<b>100</b>

## Course Calendar (120 Indicative Hours)

<b>Week</b>	<b>Term 4</b>	<b>Term 1</b>	<b>Term 2</b>	<b>Term 3</b>
<b>1</b>	<i>Introduction to HSC</i>		Core performance	MajorStudy/Composition/ Performance
<b>2</b>	Major Study /Appreciation	MajorStudy/Composition/ Performance	Core performance /Composition	<b>Task 4 Trial HSC 30%</b>
<b>3</b>	Major Study /Appreciation	Major Study, Composition	Core performance	<b>Trial HSC</b>
<b>4</b>	Major Study /Appreciation	MajorStudy/Composition/ Performance	Major Study /Composition	Appreciation
<b>5</b>	Major Study /Appreciation	Major Study, Composition	Core performance	Appreciation
<b>6</b>	Major Study /Appreciation	MajorStudy/Composition/ Performance	Core performance /Composition	Appreciation
<b>7</b>	Major Study /Appreciation	MajorStudy/Composition/ Performance	Core performance	Appreciation
<b>8</b>	Major Study /Appreciation	<b>Task 2 - 20% Year 12 FOCUS WEEK</b>	Core performance	Appreciation
<b>9</b>	Major Study /Appreciation	Major Study, Composition	<b>Task 3 - 30%</b>	Appreciation
<b>10</b>	<b>Task 1 Appreciation 25%</b>	<b>Task 2 - 15%</b>	Core performance	Appreciation
<b>11</b>	Major Study, Composition	Major Study, Composition		

## Design and Technology

	<b>TASK 1</b>	<b>TASK 2</b>	<b>TASK 3</b>	<b>TASK 4</b>	
Name of task	<i><b>Project Proposal Presentation</b></i>	<i><b>Innovation Case study</b></i>	<i><b>Final Project Presentation</b></i>	<i><b>Trial HSC</b></i>	
Type of task	Written	Report	Practical & Written	Exam	
Date of task	<b>Term 4 Week 7</b>	<b>Term 1 Week 7</b>	<b>Term 3 Week 1</b>	<b>Term 3 Weeks 2-3</b>	
Outcomes assessed	H4.1,H4.2 H4.3	H2.2, H3.1, H6.2	H1.2,H3.2, H5.1, H5.2, H6.1	H1.1, H2.1	
<b>Component</b>					<b>Weighting</b>
Knowledge and skills in: Innovation and Emerging technologies		20		20	<b>40</b>
Designing and Producing	20		30	10	<b>60</b>
<b>Total %</b>	<b>20</b>	<b>20</b>	<b>30</b>	<b>30</b>	<b>100</b>

## Course Calendar (120 Indicative Hours)

<b>Week</b>	<b>Term 4</b>	<b>Term 1</b>	<b>Term 2</b>	<b>Term 3</b>
<b>1</b>	<i>Introduction to HSC</i>		Project development and realisation	<b>Task 3 - 30%</b>
<b>2</b>	Designing and Producing: Project proposal and project management	Project development and realisation	Project development and realisation	<b>Task 4 Trial HSC 30%</b>
<b>3</b>	Project proposal and project management	Project development and realisation	Project development and realisation	<b>Trial HSC</b>
<b>4</b>	Project proposal and project management	Project development and realisation	Project development and realisation	Innovation and Emerging Technologies
<b>5</b>	Project proposal and project management	Project development and realisation	Project development and realisation	Innovation and Emerging Technologies
<b>6</b>	Project proposal and project management	Project development and realisation	Project development and realisation	Revision
<b>7</b>	Project proposal and project management	<b>Task 2 - 20%</b>	Project evaluation	Revision
<b>8</b>	<b>Task 1 - 20%</b>	<b>Year 12 FOCUS WEEK</b>	Project evaluation	Revision
<b>9</b>	Innovation and Emerging Technologies	Project development and realisation	Project evaluation	Revision
<b>10</b>	Innovation and Emerging Technologies	Project development and realisation	Project evaluation	Revision
<b>11</b>	Innovation and Emerging Technologies	Project development and realisation		

## Drama

	TASK 1	TASK 2	TASK 3	TASK 4	
Name of task	<i>Australian Drama and Theatre</i>	<i>Individual Project: Submission/ Performance of Work Under Development &amp; Studies in Drama and Theatre</i>	<i>IP Presentation/ Performance &amp; Group Performance Progress Presentation</i>	<i>Trial HSC</i>	
Type of task	Devised Performance & Essay on Topic Area of Study	A: Hand-in/present work in progress including logbook with ongoing research, drafts, investigation of ideas and reflection* B: Essay on Topic Area of study	Progress Presentation of Group Performance & Logbook	Exam	
Date of task	<b>Term 4 Weeks 9</b>	<b>Term 1 Week 8</b>	<b>Term 2 Weeks 9</b>	<b>Term 3 Weeks 2-3</b>	
Outcomes assessed	H1.1, H1.2, H1.7, H1.8, H3.2, H3.3	*H1.3, H1.6, H2.3 H3.1	H1.1, H1.3, H1.4, H1.5, H1.6 H2.1, H2.2, H2.3	H3.1, H3.2, H3.3	
<b>Component</b>					<b>Weighting</b>
Making	15	15	10		<b>40</b>
Performing		10	20		<b>30</b>
Critically Studying	5	5		20	<b>30</b>
<b>Total %</b>	<b>20</b>	<b>30</b>	<b>30</b>	<b>20</b>	<b>100</b>

## Course Calendar (120 Indicative Hours)

Week	Term 4	Term 1	Term 2	Term 3
1	<i>Introduction to HSC</i>		Group Performances/IPs	GPs/IPs/Revision
2	Australian Drama/IPs	Significant Plays/IPs	Group Performances/IPs	<b>Task 4 Trial HSC 20%</b>
3	Australian Drama/IPs	Significant Plays/IPs	Group Performances/IPs	<b>Trial HSC</b>
4	Australian Drama/IPs	Significant Plays	Group Performances/IPs	Group Performances/IPs
5	Australian Drama/IPs	Significant Plays	Group Performances/IPs	Group Performances/IPs
6	Australian Drama/IPs	Significant Plays	Group Performances/IPs	HSC Performances
7	Australian Drama/IPs	Significant Plays	Group Performances/IPs	HSC Performances
8	Australian Drama/IPs	<b>Task 2 30% Year 12 FOCUS WEEK</b>	Group Performances/IPs	Revision
9	<b>Task 2 20%</b>	<b>Significant Plays</b>	<b>Task 3 30%</b>	Revision
10	Significant Plays	Significant Plays/IPs	Group Performances/IPs	Revision
11	Significant Plays	Significant Plays/IPs		

## Economics

	<b>TASK 1</b>	<b>TASK 2</b>	<b>TASK 3</b>	<b>TASK 4</b>	
Name of task	<i>Australia's place in the Global Economy</i>	<i>Economic Issues</i>	<i>Economic Policies</i>	<i>Trial HSC</i>	
Type of task	Topic Test	Research Essay	Written Task	Exam	
Date of task	<b>Term 4 Week 9</b>	<b>Term 1 Week 8</b>	<b>Term 2 Week 8</b>	<b>Term 3 Weeks 2-3</b>	
Outcomes assessed	H1, H3, H11	H5, H9, H6	H5, H9, H7	H1, H2, H4, H8, H10	
<b>Component</b>					<b>Weighting</b>
Knowledge & understanding	10	10	10	10	<b>40</b>
Stimulus-based skills	5			15	<b>20</b>
Inquiry and research		10	10		<b>20</b>
Communication of information and ideas	5			15	<b>20</b>
<b>Total %</b>	<b>20</b>	<b>20</b>	<b>20</b>	<b>40</b>	<b>100</b>

## Course Calendar (120 Indicative Hours)

<b>Week</b>	<b>Term 4</b>	<b>Term 1</b>	<b>Term 2</b>	<b>Term 3</b>
<b>1</b>	<i>Introduction to HSC</i>		Economic Policies	The Global Economy
<b>2</b>	Australia's Place in the Global Economy	Economic Issues	Economic Policies	<b>Task 4 Trial HSC 40%</b>
<b>3</b>	Australia's Place in the Global Economy	Economic Issues	Economic Policies	<b>Trial HSC</b>
<b>4</b>	Australia's Place in the Global Economy	Economic Issues	Economic Policies	The Global Economy
<b>5</b>	Australia's Place in the Global Economy	Economic Issues	Economic Policies	The Global Economy
<b>6</b>	Australia's Place in the Global Economy	Economic Issues	Economic Policies	The Global Economy
<b>7</b>	Australia's Place in the Global Economy	Economic Issues	Economic Policies	The Global Economy
<b>8</b>	Australia's Place in the Global Economy	<b>Task 2 - 20% Year 12 FOCUS WEEK</b>	<b>Task 3 - 20%</b>	The Global Economy
<b>9</b>	Australia's Place in the Global Economy	Economic Policies	The Global Economy	The Global Economy
<b>10</b>	<b>Task 1 - 20%</b>	Economic Policies	The Global Economy	The Global Economy
<b>11</b>	Economic Issues	Economic Policies		

## Engineering Studies

	<b>TASK 1</b>	<b>TASK 2</b>	<b>TASK 3</b>	<b>TASK 4</b>	
Name of task	<i>Civil Engineering</i>	<i>Personal &amp; Public Transport</i>	<i>Materials Research</i>	<i>Trial HSC</i>	
Type of task	Report	Problem Solving Task	Research Task	Exam	
Date of task	<b>Term 4 Week 8</b>	<b>Term 1 Week 8</b>	<b>Term 2 Week 6</b>	<b>Term 3 Weeks 2-3</b>	
Outcomes assessed	H3.1, H3.2, H4.2, H5.1, H5.2	H3.3, H4.3, H6.1, H6.2	H1.1, H2.1, H2.2, H4.1	H1.2, H2.1, H3.1, H3.3, H4.2, H6.1	
<b>Component</b>					<b>Weighting</b>
Knowledge and understanding of course content	10	15	15	20	<b>60</b>
Knowledge and skills in research, problem solving and communication related to engineering practice	15	10	5	10	<b>40</b>
<b>Total %</b>	<b>25</b>	<b>25</b>	<b>20</b>	<b>30</b>	<b>100</b>

## Course Calendar (120 Indicative Hours)

<b>Week</b>	<b>Term 4</b>	<b>Term 1</b>	<b>Term 2</b>	<b>Term 3</b>
<b>1</b>	<i>Introduction to HSC</i>		Telecommunications	Aeronautical Engineering
<b>2</b>	Civil Structures	Personal and Public Transport	Telecommunications	<b>Task 4 Trial HSC 30%</b>
<b>3</b>	Civil Structures	Personal and Public Transport	Telecommunications	<b>Trial HSC</b>
<b>4</b>	Civil Structures	Personal and Public Transport	Telecommunications	Aeronautical Engineering
<b>5</b>	Civil Structures	Personal and Public Transport	Telecommunications	Aeronautical Engineering
<b>6</b>	Civil Structures	Personal and Public Transport	<b>Task 3 - 20%</b>	Aeronautical Engineering
<b>7</b>	Civil Structures	Personal and Public Transport	Aeronautical Engineering	Revision
<b>8</b>	<b>Task 1 - 25%</b>	<b>Task 2 - 25% Year 12 FOCUS WEEK</b>	Aeronautical Engineering	Revision
<b>9</b>	Civil Structures	Telecommunications	Aeronautical Engineering	Revision
<b>10</b>	Civil Structures	Telecommunications	Aeronautical Engineering	Revision
<b>11</b>	Civil Structures	Telecommunications		

## English – Advanced

	TASK 1	TASK 2	TASK 3	TASK 4	
Name of task	<i>Common Module – including related material Texts and Human Experiences (15%)</i> <i>Incorporating Module C: The Craft of Writing (10%)</i>	<i>Module A: Textual Conversations (20%)</i> <i>Incorporating Module C: Craft of Writing (5%)</i>	<i>Module B: Critical Study of Literature (20%)</i> <i>Incorporating Module C: The Craft of Writing (5%)</i>	<i>Trial HSC</i> <i>Paper 1: Texts &amp; Human Experiences (10%)</i> <i>Paper 2: Modules (15%)</i>	
Type of task	Multimodal Presentation	Writing Piece & Reflection	Annotated Reading Folio & Reflection	Exam	
Date of task	<b>Term 4 Week 8</b>	<b>Term 1 Week 8</b>	<b>Term 2 Week 8</b>	<b>Term 3 Weeks 2-3</b>	
Outcomes assessed	EA12-1, EN12-2, EA12-5, EA12-6, EA12-9	EA12-3, EA12-4, EA12-5, EA12-6, EA12-7, EA12-8, EA12-9	EA12-1, EN12-2, EA12-4, EA12-9	EA12-1, EA12-3, EA12-4, EA12-5, EA12-6, EA12-7, EA12-8, EA12-9	
<b>Component</b>					<b>Weighting</b>
Knowledge and understanding of course content	10	15	10	15	<b>50</b>
Skills in responding to texts and communication of ideas appropriate to audience, purpose and context across all modes	15	10	15	10	<b>50</b>
<b>Total %</b>	<b>25</b>	<b>25</b>	<b>25</b>	<b>25</b>	<b>100</b>

## Course Calendar (120 Indicative Hours)

Week	Term 4	Term 1	Term 2	Term 3
<b>1</b>	<i>Introduction to HSC</i>		Craft of Writing	Revision
<b>2</b>	Craft of Writing	Craft of Writing	Craft of Writing	<b>Task 4 Trial HSC 25%</b>
<b>3</b>	Craft of Writing	Module A	Module B	<b>Trial HSC</b>
<b>4</b>	Common Module	Module A	Module B	Common Module
<b>5</b>	Common Module	Module A	Module B	Common Module
<b>6</b>	Common Module	Module A	Module B	Module A
<b>7</b>	Common Module	Module A	Module B	Module A + Module B
<b>8</b>	<b>Task 1 - 25%</b>	<b>Task 2 - 25% Year 12 FOCUS WEEK</b>	<b>Task 3 - 25%</b>	Module B
<b>9</b>	Common Module	Module A	Module B	Craft of Writing
<b>10</b>	Common Module	Module A	Module B	Craft of Writing
<b>11</b>	Craft of Writing	Craft of Writing		

## English - Standard

	TASK 1	TASK 2	TASK 3	TASK 4	
Name of task	<i>Common Module – including related material Texts and Human Experiences (15%)</i> <i>Incorporating Module C: The Craft of Writing (10%)</i>	<i>Module A: Language, Identity and Culture (20%)</i> <i>Incorporating Module C: Craft of Writing (5%)</i>	<i>Module B: Close Study of Literature (20%)</i> <i>Incorporating Module C: The Craft of Writing (5%)</i>	<i>Trial HSC</i> <i>Paper 1: Texts &amp; Human Experiences (10%)</i> <i>Paper 2: Modules (15%)</i>	
Type of task	Multimodal Presentation	Writing Piece & Reflection	Annotated Reading Folio & Reflection	Exam	
Date of task	<b>Term 4 Week 8</b>	<b>Term 1 Week 8</b>	<b>Term 2 Week 8</b>	<b>Term 3 Weeks 2-3</b>	
Outcomes assessed	EN12-1, EN12-2, EN12-5, EN12-6, EN12-9	EN12-1, EN12-3, EN12-4, EN12-5, EN12-6, EN12-7, EN12-8, EN12-9	EN12-1, EN12-2, EN12-4, EN12-9	EN12-1, EN12-3, EN12-4, EN12-5, EN12-6, EN12-7, EN12-8, EN12-9	
<b>Component</b>					<b>Weighting</b>
Knowledge and understanding of course content	10	15	10	15	<b>50</b>
Skills in responding to texts and communication of ideas appropriate to audience, purpose and context across all modes	15	10	15	10	<b>50</b>
<b>Total %</b>	<b>25</b>	<b>25</b>	<b>25</b>	<b>25</b>	<b>100</b>

## Course Calendar (120 Indicative Hours)

Week	Term 4	Term 1	Term 2	Term 3
<b>1</b>	<i>Introduction to HSC</i>		Craft of Writing	Revision
<b>2</b>	Craft of Writing	Craft of Writing	Craft of Writing	<b>Task 4 Trial HSC 25%</b>
<b>3</b>	Craft of Writing	Module A	Module B	<b>Trial HSC</b>
<b>4</b>	Common Module	Module A	Module B	Common Module
<b>5</b>	Common Module	Module A	Module B	Common Module
<b>6</b>	Common Module	Module A	Module B	Module A
<b>7</b>	Common Module	Module A	Module B	Module A + Module B
<b>8</b>	<b>Task 1 - 25%</b>	<b>Task 2 - 25%</b> <b>Year 12 FOCUS WEEK</b>	<b>Task 3 - 25%</b>	Module B
<b>9</b>	Common Module	Module A	Module B	Craft of Writing
<b>10</b>	Common Module	Module A	Module B	Craft of Writing
<b>11</b>	Craft of Writing	Craft of Writing		

## English as an Additional Language or Dialect

	TASK 1	TASK 2	TASK 3	TASK 4	
Name of task	<b>Module A: Texts and Human Experiences</b>	<b>Module B: Language, Identity and Culture</b>	<b>Module D: Focus on Writing</b>	<b>Trial HSC</b>	
Type of task	Podcast Speaking and Listening Task (Multimodal Presentation)	Reading and Writing Task based on unseen material and prescribed text	Imaginative Writing with Written Annotations	Exam	
Date of task	<b>Term 4 Week 8</b>	<b>Term 1 Week 7</b>	<b>Term 2 Week 7</b>	<b>Term 3 Weeks 2-3</b>	
Outcomes assessed					
<b>Component</b>					<b>Weighting</b>
Knowledge and understanding of course content	10	15	10	15	<b>50</b>
Skills in responding to texts and communication of ideas appropriate to audience, purpose and context across all modes	10	10	15	15	<b>50</b>
<b>Total %</b>	<b>20</b>	<b>25</b>	<b>25</b>	<b>30</b>	<b>100</b>

## Course Calendar (120 Indicative Hours)

Week	Term 4	Term 1	Term 2	Term 3
1	Introduction to HSC		Module C: Close Study of Text	Revision
2	Module A: Texts & Human Experiences	Module B: Language, Identity & Culture	Module C: Close Study of Text	<b>Task 4 Trial HSC 30%</b>
3	Module A: Texts & Human Experiences	Module B: Language, Identity & Culture	Module C: Close Study of Text	Trial HSC
4	Module A: Texts & Human Experiences	Module B: Language, Identity & Culture	Module C: Close Study of Text	Module A: Texts & Human Experiences
5	Module A: Texts & Human Experiences	Module B: Language, Identity & Culture	Module C: Close Study of Text	Module A: Texts & Human Experiences
6	Module A: Texts & Human Experiences	Module B: Language, Identity & Culture	Module C: Close Study of Text	Module B: Language, Identity & Culture
7	Module A: Texts & Human Experiences	<b>Task 2 - 25%</b>	<b>Task 3 - 25%</b>	Module B: Language, Identity & Culture
8	<b>Task 1 - 20%</b>	<b>Year 12 FOCUS WEEK</b>	Module C: Close Study of Text	Module C: Close Study of Text
9	Module A: Texts & Human Experiences	Module B: Language, Identity & Culture	Module C: Close Study of Text	Module C: Close Study of Text
10	Module A: Texts & Human Experiences	Module B: Language, Identity & Culture	Revision	Revision
11	Module D: Focus on Writing	Module B: Language, Identity & Culture		

## English Extension 1

	<b>TASK 1</b>	<b>TASK 2</b>	<b>TASK 4</b>	
Name of task	<b><i>In Class Essay – Critical Response</i></b>	<b><i>Tutorial Presentation</i></b>	<b><i>Trial HSC</i></b>	
Type of task	Reading & Writing	Speaking, Listening, Representing	Exam	
Date of task	<b>Term 1 Week 5</b>	<b>Term 2 Week 6</b>	<b>Term 3 Weeks 2-3</b>	
Outcomes assessed	EE12-1 EE12-2 EE12-3	EE12-1 EE12-2 EE12-4	EE12-1 EE12-2 EE12-3 EE12-4	
<b>Component</b>				<b>Weighting</b>
Knowledge and understanding of complex texts and of how and why they are valued.	10	20	20	<b>50</b>
Skills in : - Complex Analysis - Sustained Composition - Independent Investigation	20	20	10	<b>50</b>
<b>Total %</b>	<b>30</b>	<b>40</b>	<b>30</b>	<b>100</b>

## Course Calendar (60 Indicative Hours)

<b>Week</b>	<b>Term 4</b>	<b>Term 1</b>	<b>Term 2</b>	<b>Term 3</b>
<b>1</b>	<i>Introduction to HSC</i>		Elective	Elective
<b>2</b>	Literary Worlds Common Module	Elective	Elective	<b>Task 3 Trial HSC 30%</b>
<b>3</b>	Literary Worlds Common Module	Elective	Elective	Trial HSC
<b>4</b>	Literary Worlds Common Module	Elective	Elective	Elective
<b>5</b>	Literary Worlds Common Module	<b>Task 1 - 30%</b>	Elective	Elective
<b>6</b>	Literary Worlds Common Module	Elective	<b>Task 2 - 40%</b>	Elective
<b>7</b>	Literary Worlds Common Module	Elective	Elective	Elective
<b>8</b>	Literary Worlds Common Module	<b>Year 12 FOCUS WEEK</b>	Elective	Literary Worlds Common Module
<b>9</b>	Literary Worlds Common Module	Elective	Elective	Literary Worlds Common Module
<b>10</b>	Literary Worlds Common Module	Elective	Elective	Literary Worlds Common Module
<b>11</b>	Elective	Elective		

## English Extension 2

	<b>TASK 1</b>	<b>TASK 2</b>	<b>TASK 3</b>	
Name of task	<i>Vive Voce</i>	<i>Literature Review</i>	<i>Critique of the Creative Process</i>	
Type of task	Interview (20 minutes)	Written submission 1200 words	Written submission 1000 words	
Date of task	<b>Term 1 Week 10</b>	<b>Term 2 Week 10</b>	<b>Term 3 Week 1</b>	
Outcomes assessed	EEX12-1, EEX12-4, EEX12-5	EEX12-1, EEX12-2, EEX12-3, EEX12-4	EEX12-2, EEX12-3, EEX12-5	
<b>Component</b>				<b>Weighting</b>
Skills in extensive independent research	15	20	15	<b>50</b>
Skills in sustained composition	15	20	15	<b>50</b>
<b>Total %</b>	<b>30</b>	<b>40</b>	<b>30</b>	<b>100</b>

## Course Calendar (60 Indicative Hours)

<b>Week</b>	<b>Term 4</b>	<b>Term 1</b>	<b>Term 2</b>	<b>Term 3</b>
<b>1</b>	<i>Introduction to HSC</i>		Composition	<b>Task 3 - 30%</b>
<b>2</b>	Course Requirements & the forms	Research	Composition	<b>Trial HSC</b>
<b>3</b>	Exploring Form/s	Research	Composition	Trial HSC
<b>4</b>	Exploring Form/s	Research	Composition	Composition
<b>5</b>	Developing proposal	Research	Composition	<b>Major Work Submission</b>
<b>6</b>	Developing proposal	Research	Composition	
<b>7</b>	Developing proposal	Research	Composition	
<b>8</b>	Developing proposal	<b>Year 12 FOCUS WEEK</b>	Composition	
<b>9</b>	Developing proposal	Research	Composition	
<b>10</b>	<b>Task 1 - 30%</b>	<b>Task 2 - 40%</b>	Composition	
<b>11</b>	Research	Research		

## English Studies

	TASK 1	TASK 2	TASK 3	TASK 4	
Name of task	<b>Common Module – including related material Texts and Human Experiences</b>	<b>Elective Module F: MiTunes &amp; texts</b>	<b>Elective Module D: Digital Worlds</b>	<b>Trial HSC</b>	
Type of task	Multimodal Presentation	Creative or Management Portfolio	Collection of Coursework	Examination	
Date of task	<b>Term 4 Week 8</b>	<b>Term 1 Week 8</b>	<b>Term 2 Week 7</b>	<b>Term 3 Weeks 2 &amp; 3</b>	
Outcomes assessed	ES12-1, ES12-2, ES12-3, ES12-6	ES12-2, ES12-4, ES12-6, ES12-8	ES12-1, ES12-3, ES12-4, ES12-6, ES12-7, ES12-10	ES12-1, ES12-2, ES12-3, ES12-5, ES12-6, ES12-8, ES12-9	
<b>Component</b>					<b>Weighting</b>
Knowledge and understanding of course content	10	20	10	10	<b>50</b>
Skills in : -Comprehending texts -Communicating ideas Using language accurately, appropriately and effectively	15	10	15	10	<b>50</b>
<b>Total %</b>	<b>25</b>	<b>30</b>	<b>25</b>	<b>20</b>	<b>100</b>

**Please Note:** All English Studies students are required to sit the Trial HSC Examination in Term 3 Weeks 2/3 as it is one of the Assessment Tasks for this course.

## Course Calendar (120 Indicative Hours)

Week	Term 4	Term 1	Term 2	Term 3
<b>1</b>	<i>Introduction to HSC</i>		Elective Module D: Digital Worlds	Elective Module B: Telling Us About It
<b>2</b>	Common Module	Elective Module F: MiTunes & texts	Elective Module D: Digital Worlds	<b>Task 4 - 20% Trial HSC</b>
<b>3</b>	Common Module	Elective Module F: MiTunes & texts	Elective Module D: Digital Worlds	Trial HSC
<b>4</b>	Common Module	Elective Module F: MiTunes & texts	Elective Module D: Digital Worlds	Elective Module B: Telling Us About It
<b>5</b>	Common Module	Elective Module F: MiTunes & texts	Elective Module B: Telling Us About It	Elective Module B: Telling Us About It
<b>6</b>	Common Module	Elective Module F: MiTunes & texts	Elective Module B: Telling Us About It	Modules Revision
<b>7</b>	Common Module	Elective Module F: MiTunes & texts	<b>Task 3 - 25%</b>	Modules Revision
<b>8</b>	<b>Task 1 - 25%</b>	<b>Task 2 - 30% Year 12 FOCUS WEEK</b>	Elective Module B: Telling Us About It	Common Module Revision
<b>9</b>	Common Module	Elective Module D: Digital Worlds	Elective Module B: Telling Us About It	Common Module Revision
<b>10</b>	Common Module	Elective Module D: Digital Worlds	Elective Module B: Telling Us About It	Common Module Revision
<b>11</b>	Common Module	Elective Module D: Digital Worlds		

## Exploring Early Childhood

	<b>TASK 1</b>	<b>TASK 2</b>	<b>TASK 3</b>	<b>TASK 4</b>	
<b>Name of task</b>	<i><b>Creative Toy Design</b></i>	<i><b>Children's Services</b></i>	<i><b>Starting School Booklet</b></i>	<i><b>Examination</b></i>	
<b>Type of task</b>	Practical	Investigation	In Class Task	Examination	
<b>Date of task</b>	<b>Term 4 Week 9</b>	<b>Term 1 Week 5</b>	<b>Term 2 Week 9</b>	<b>Term 3 Weeks 2 &amp; 3</b>	
<b>Outcomes assessed</b>	H1.3, H1.4, H2.2	H2.1, H4.1, H6.1	H1.3, H2.1, H2.2, H6.2	H2.3, H2.4, H4.3, H6.2	
<b>Component</b>					<b>Weighting</b>
Knowledge and understanding of course content		25		25	<b>50</b>
Skills in critical thinking, research, analysis and communicating	25		25		<b>50</b>
<b>Total %</b>	<b>25</b>	<b>25</b>	<b>25</b>	<b>25</b>	<b>100</b>

## Course Calendar (120 Indicative Hours)

<b>Week</b>	<b>Term 4</b>	<b>Term 1</b>	<b>Term 2</b>	<b>Term 3</b>
<b>1</b>	Introduction to HSC		Module 7: Historical & Cultural Contexts of Childhood	<b>Exam Revision</b>
<b>2</b>	Module 2: Play and the Developing Child	Module 8: The Children's Services Industry	Module 7: Historical & Cultural Contexts of Childhood	<b>Task 4 Trial HSC 25%</b>
<b>3</b>	Module 2: Play and the Developing Child	Module 8: The Children's Services Industry	Module 3: Starting School	Trial HSC
<b>4</b>	Module 2: Play and the Developing Child	Module 8: The Children's Services Industry	Module 3: Starting School	Module 9: Young Children and Media
<b>5</b>	Module 2: Play and the Developing Child	<b>Task 2 – 25%</b>	Module 3: Starting School	Module 9: Young Children and Media
<b>6</b>	Module 2: Play and the Developing Child	Module 7: Historical & Cultural Contexts of Childhood	Module 3: Starting School	Module 9: Young Children and Media
<b>7</b>	Module 2: Play and the Developing Child	Module 7: Historical & Cultural Contexts of Childhood	Module 3: Starting School	Module 9: Young Children and Media
<b>8</b>	Module 8: The Children's Services Industry	<b>Year 12 FOCUS WEEK</b>	Module 3: Starting School	Module 9: Young Children and Media
<b>9</b>	<b>Task 1 – 25%</b>	Module 7: Historical & Cultural Contexts of Childhood	<b>Task 3 – 25%</b>	Module 9: Young Children and Media
<b>10</b>	Module 8: The Children's Services Industry	Module 7: Historical & Cultural Contexts of Childhood	Module 3: Starting School	Module 9: Young Children and Media
<b>11</b>	Module 8: The Children's Services Industry	Module 7: Historical & Cultural Contexts of Childhood		

## Film Studies

	<b>TASK 1</b>	<b>TASK 2</b>	<b>TASK 3</b>	<b>TASK 4</b>	
Name of task	<b>Documentary Film</b>	<b>Mid Course Review</b>	<b>Film Production &amp; Proposal</b>	<b>Feature Film</b>	
Type of task	Practical Task Film Proposal, Story Board Documentation	Exam, Critique & Analysis	Film proposal & documentation	Practical Task: The Feature Film	
Date of task	<b>Term 4 Week 10</b>	<b>Term 1 Week 8</b>	<b>Term 2 Week 9</b>	<b>Term 3 Week 7</b>	
Outcomes assessed	1.1A, 1.2A, 2.1A, 2.3A, 3.1A, 3.3A, 4.3A	1.2A, 2.1A, 3.1A, 3.3A, 4.1A, 4.2A, 5.2A	1.1A, 1.2A, 2.1A, 2.2A, 3.1A, 3.3A, 4.1A, 4.2A, 5.2A	1.1A, 1.2A, 2.1A, 2.3A, 3.1A, 3.3A, 4.1A	
<b>Component</b>					<b>Weighting</b>
<b>Artmaking</b>	20		20	30	<b>70</b>
<b>Study of Filmmaking</b>		30			<b>30</b>
<b>Total %</b>	<b>20</b>	<b>30</b>	<b>20</b>	<b>30</b>	<b>100</b>

## Course Calendar (120 Indicative Hours)

<b>Week</b>	<b>Term 4</b>	<b>Term 1</b>	<b>Term 2</b>	<b>Term 3</b>
<b>1</b>	<i>Introduction to HSC</i>		Commence Film Production and Proposal	Feature Film production
<b>2</b>	Introductory Lessons	Film Viewing	Film Production	<b>Trial HSC</b>
<b>3</b>	Commence Filmmaking and Documentation	Film Coursework	Film Production	Trial HSC
<b>4</b>	Production coursework	Film Coursework and Theory	Film Production	Film production & Post Production, editing
<b>5</b>	Production coursework	Practical Coursework	Progress Submission	Film production & Post Production, editing
<b>6</b>	Production coursework	Practical Coursework	Camera Technique	Film production & Post Production, editing
<b>7</b>	Production coursework	Practical Coursework	Camera Technique	<b>Task 4 Feature Film Submission 30%</b>
<b>8</b>	Production coursework	<b>Task 2 - Exam 30% Year 12 FOCUS WEEK</b>	Camera Technique	Evaluation Film audience review
<b>9</b>	Production coursework & Theory	Practical Coursework	<b>Task 3 Assessment Submission and Evaluation 20%</b>	Evaluation Film audience review
<b>10</b>	<b>Task 1 Submission 20%</b>	Practical Coursework	<b>Task Presentations</b>	Evaluation Film audience review
<b>11</b>	Commence Film Review	Practical Coursework		

## Food Technology

	<b>TASK 1</b>	<b>TASK 2</b>	<b>TASK 3</b>	<b>TASK 4</b>	
Name of task	<i>Australian Food Industry &amp; Manufacture</i>	<i>Food Product Development</i>	<i>Trial HSC</i>	<i>Contemporary Food Issues</i>	
Type of task	Research Product Label	Survey, Product and Package	Exam	Research Presentation	
Date of task	<b>Term 4 Week 9</b>	<b>Term 2 Weeks 6-7</b>	<b>Term 3 Weeks 2-3</b>	<b>Term 3 Week 5</b>	
Outcomes assessed	H1.2, H1.4, H3.1, H5.1	H1.1, H1.3, H4.1, H4.2, H5.1	H1.1, H1.2, H1.3, H1.4, H2.1	H1.4, H2.1, H3.2, H5.1	
<b>Component</b>					<b>Weighting</b>
Knowledge and understanding of course content	5		20	15	<b>40</b>
Knowledge and skills in designing, researching, analysing and evaluating	5	10	10	5	<b>30</b>
Skills in experimenting with and preparing food by applying theoretical concepts	10	20			<b>30</b>
<b>Total %</b>	<b>20</b>	<b>30</b>	<b>30</b>	<b>20</b>	<b>100</b>

## Course Calendar (120 Indicative Hours)

<b>Week</b>	<b>Term 4</b>	<b>Term 1</b>	<b>Term 2</b>	<b>Term 3</b>
<b>1</b>	<i>Introduction to HSC</i>		Food Product Development	Contemporary Nutrition Issues
<b>2</b>	Australian Food Industry	Food Manufacture	Food Product Development	<b>Task 3 Trial HSC 20%</b>
<b>3</b>	Australian Food Industry	Food Manufacture	Food Product Development	Trial HSC
<b>4</b>	Australian Food Industry	Food Manufacture	Food Product Development	Contemporary Nutrition Issues
<b>5</b>	Australian Food Industry	Food Manufacture	Food Product Development	<b>Task 4 Contemporary Nutrition Issues 20%</b>
<b>6</b>	Australian Food Industry	Food Manufacture	<b>Task 2 Food Product Development 30%</b>	Contemporary Nutrition Issues
<b>7</b>	Food Manufacture	Food Manufacture	<b>Task 2 cont.</b>	Contemporary Nutrition Issues
<b>8</b>	Food Manufacture	<b>Year 12 FOCUS WEEK</b>	Contemporary Nutrition Issues	Contemporary Nutrition Issues
<b>9</b>	<b>Task 1 Research AFI Product Label 30%</b>	Food Product Development	Contemporary Nutrition Issues	Revision
<b>10</b>	Food Manufacture	Food Product Development	Contemporary Nutrition Issues	Revision
<b>11</b>	Food Manufacture	Food Product Development		

## History Extension 1

	<b>TASK 1</b>	<b>TASK 2</b>	<b>TASK 3</b>	
Name of task	<b>History Project - Process</b>	<b>History Project - Essay</b>	<b>Trial HSC</b>	
Type of task	Proposal Process Log Annotated Sources	Print submission 2500 word essay with bibliography	Exam	
Date of task	<b>Term 1 Week 10</b>	<b>Term 2 Week 10</b>	<b>Term 3 Weeks 2-3</b>	
Outcomes assessed	HE12-2, HE12-3, HE12-4	HE12-1, HE12-2, HE12-3, HE12-4	HE12-1, HE12-3, HE12-4	
<b>Component</b>				<b>Weighting</b>
Knowledge and understanding of significant historical ideas and processes	10	10	20	<b>40</b>
Skills in designing, undertaking and communicating historical inquiry and analysis	20	30	10	<b>60</b>
<b>Total %</b>	<b>30</b>	<b>40</b>	<b>30</b>	<b>100</b>

## Course Calendar (60 Indicative Hours)

<b>Week</b>	<b>Term 4</b>	<b>Term 1</b>	<b>Term 2</b>	<b>Term 3</b>
<b>1</b>	<i>Introduction to HSC</i>		Constructing History – Case Studies	Constructing History – Case Studies
<b>2</b>	Reading History	Constructing History – Key Questions	Constructing History – Case Studies	<b>Task 3 Trial HSC 30%</b>
<b>3</b>	Reading History	Constructing History – Key Questions	History Project	Trial HSC
<b>4</b>	Reading History	Constructing History – Key Questions	History Project	Constructing History – Case Studies
<b>5</b>	Constructing History – Key Questions	Constructing History – Key Questions	History Project	Constructing History – Case Studies
<b>6</b>	Constructing History – Key Questions	History Project	History Project	Constructing History – Case Studies
<b>7</b>	Constructing History – Key Questions	History Project	History Project	Constructing History – Case Studies
<b>8</b>	Constructing History – Key Questions	<b>Task 1 - 30% Year 12 FOCUS WEEK</b>	Constructing History – Case Studies	Constructing History – Key Questions
<b>9</b>	History Project	Constructing History – Key Questions	Constructing History – Case Studies	Constructing History – Key Questions
<b>10</b>	History Project	<b>Task 1 - 30%</b>	<b>Task 2 - 40%</b>	Constructing History – Key Questions
<b>11</b>	History Project	Constructing History – Key Questions		

## Industrial Technology – Timber and Furnishings

	TASK 1	TASK 2	TASK 3	TASK 4	
Name of task	<b>Presentation: Major Project Ideas and Development</b>	<i>Industry Study</i>	<i>Presentation of major Project</i>	<i>Trial HSC</i>	
Type of task	Folio	Report	Practical + Written	Exam	
Date of task	<b>Term 4 Week 7</b>	<b>Term 2 Week 5</b>	<b>Term 3 Week 1</b>	<b>Term 3 Weeks 2-3</b>	
Outcomes assessed	H3.1, H3.2, H3.3, H6.1	H1.1, H1.3, H7.1	H2.1, H4.1, H4.2, H5.1, H5.2, H6.1, H6.2	H1.2, H4.3, H7.	
<b>Component</b>					<b>Weighting</b>
Knowledge and understanding of the organisation and management of, and manufacturing processes and techniques used by, the focus area industry		20		20	<b>40</b>
Knowledge, skills and understanding in designing, managing, problem-solving, communicating and the safe use of manufacturing processes and techniques through the design and production of a quality major project	20		30	10	<b>60</b>
<b>Total %</b>	<b>20</b>	<b>20</b>	<b>30</b>	<b>30</b>	<b>100</b>

## Course Calendar (120 Indicative Hours)

Week	Term 4	Term 1	Term 2	Term 3
<b>1</b>	<i>Introduction to HSC</i>		Major Project, Industry Study	<b>Task 3 Final Project Presentation 30%</b>
<b>2</b>	Major Project, Industry Study	Major Project, Industry Study	Major Project, Industry Study	<b>Task 4 Trial HSC 30%</b>
<b>3</b>	Major Project, Industry Study	Major Project, Industry Study	Major Project, Industry Study	Trial HSC
<b>4</b>	Major Project, Industry Study	Major Project, Industry Study	Major Project, Industry Study	Timber Products and Furniture Technologies
<b>5</b>	Major Project, Industry Study	Major Project, Industry Study	<b>Task 2 Industry Study 20%</b>	Timber Products and Furniture Technologies
<b>6</b>	Major Project, Industry Study	Major Project, Industry Study	Major Project	Timber Products and Furniture Technologies
<b>7</b>	<b>Task 1 Presentation Project Proposal 20%</b>	Major Project, Industry Study	Major Project	Revision
<b>8</b>	Major Project, Industry Study	<b>Year 12 FOCUS WEEK</b>	Major Project	Revision
<b>9</b>	Major Project, Industry Study	Major Project, Industry Study	Major Project	Revision
<b>10</b>	Major Project, Industry Study	Major Project, Industry Study	Major Project	Revision
<b>11</b>	Major Project, Industry Study	Major Project, Industry Study		

## Information, Processes and Technology

	<b>TASK 1</b>	<b>TASK 2</b>	<b>TASK 3</b>	<b>TASK 4</b>	
Name of task	<i><b>Project Management</b></i>	<i><b>Information Systems</b></i>	<i><b>Major Project Work</b></i>	<i><b>Trial HSC</b></i>	
Type of task	Minor Project	Minor Project	Major Project	Exam	
Date of task	<b>Term 4 Week 8</b>	<b>Term 1 Week 8</b>	<b>Term 2 Week 9</b>	<b>Term 3 Weeks 2-3</b>	
Outcomes assessed	H1.1, H1.2, H2.1, H2.2, H3.1, H3.2, H4.1, H5.1, H5.2	H1.1, H1.2, H2.1, H2.2, H3.1, H3.2, H4.1, H5.1, H5.2	H1.1, H1.2, H2.1, H2.2, H3.1, H3.2, H4.1, H5.1, H5.2, H6.1, H6.2, H7.1, H7.2	H1.1, H1.2, H2.1, H2.2, H3.1, H3.2, H4.1, H5.1, H5.2, H6.1, H6.2, H7.1, H7.2	
<b>Component</b>					<b>Weighting</b>
Knowledge and understanding of course content	10	15	15	20	<b>60</b>
Knowledge and skills in the design and development of information systems	5	10	15	10	<b>40</b>
<b>Total %</b>	<b>15</b>	<b>25</b>	<b>30</b>	<b>30</b>	<b>100</b>

## Course Calendar (120 Indicative Hours)

<b>Week</b>	<b>Term 4</b>	<b>Term 1</b>	<b>Term 2</b>	<b>Term 3</b>
<b>1</b>	<i>Introduction to HSC</i>		Transaction Processing Systems	Multimedia Systems
<b>2</b>	Project Management	Information Systems and Databases	Transaction Processing Systems	<b>Task 4 Trial HSC 30%</b>
<b>3</b>	Project Management	Communication Systems	Transaction Processing Systems	Trial HSC
<b>4</b>	Project Management	Communication Systems	Transaction Processing Systems	Multimedia Systems
<b>5</b>	Project Management	Communication Systems	Transaction Processing Systems	Multimedia Systems
<b>6</b>	Project Management	Communication Systems	Multimedia Systems	Revision
<b>7</b>	Project Management	Communication Systems	Multimedia Systems	Revision
<b>8</b>	<b>Task 1 Project Management 15%</b>	<b>Task 2 25% Year 12 FOCUS WEEK</b>	Multimedia Systems	Revision
<b>9</b>	Information Systems and Databases	Transaction Processing Systems	<b>Task 3 Major Project 30%</b>	Revision
<b>10</b>	Information Systems and Databases	Transaction Processing Systems	Multimedia Systems	Revision
<b>11</b>	Information Systems and Databases	Transaction Processing Systems		

## Investigating Science

	<b>TASK 1</b>	<b>TASK 2</b>	<b>TASK 3</b>	<b>TASK 4</b>	
<b>Name of task</b>	<b><i>Research Task</i></b>	<b><i>Module Assessment</i></b>	<b><i>Testing Claims</i></b>	<b><i>Trial HSC</i></b>	
<b>Type of task</b>	Research task/in class writing	Test	Depth Study	Exam	
<b>Date of task</b>	<b>Term 4 Week 8</b>	<b>Term 1 Week- 8</b>	<b>Term 2 Week 9</b>	<b>Term 3 Week 2&amp;3</b>	
<b>Outcomes assessed</b>	INS11/12-1 INS11/12-3 INS11/12-4 INS11/12-5 INS12-12	INS11/12-1 INS11/12-2 INS11/12-3 INS11/12-4 INS12-12 INS12-13	INS11/12-1 INS11/12-2 INS11/12-4 INS11/12-5 INS11/12-7 INS12-14	INS11/12-5 INS11/12-6 INS12-12 INS12-13 INS12-14 INS12-15	
<b>Component</b>					<b>Weighting</b>
Skills in Working Scientifically	10	10	10	10	<b>40</b>
Knowledge and Understanding	10	10	20	20	<b>60</b>
<b>Total %</b>	<b>20</b>	<b>20</b>	<b>30</b>	<b>30</b>	<b>100</b>

## Course Calendar (120 Indicative Hours)

<b>Week</b>	<b>Term 4</b>	<b>Term 1</b>	<b>Term 2</b>	<b>Term 3</b>
<b>1</b>	<i>Introduction to HSC</i>		Module 7 Fact or Fallacy	Revision
<b>2</b>	HSC Course- Scientific Investigation	Module 6 -Technologies	Module 7 Fact or Fallacy	<b>Task 4 Trial HSC 30%</b>
<b>3</b>	Scientific Investigation	Module 6 -Technologies	Module 73 Fact or Fallacy	Trial HSC
<b>4</b>	Scientific Investigation	Module 6 -Technologies	Module 7 Fact or Fallacy	Module 8 Science & Society
<b>5</b>	Scientific Investigation	Module 6 Technologies	Module 8 Science & Society	Module 8 Science & Society
<b>6</b>	Scientific Investigation	Module 6 Technologies	Module 8 Science & Society	Module 8 Science & Society
<b>7</b>	Scientific Investigation	Module 6 Technologies	Module 8 Science & Society	Module 8 Science & Society
<b>8</b>	<b>Task 1 – 20%</b>	<b>Task 2 - 20% Year 12 FOCUS WEEK</b>	Module 8 Science & Society	Module 8 Science & Society
<b>9</b>	Module 2 -Technologies	Module 7 Fact or Fallacy	<b>Task 3 – 30%</b>	HSC Revision
<b>10</b>	Module 2 -Technologies	Module 7 Fact or Fallacy	Module 8 Science & Society	HSC Revision
<b>11</b>	Module 2 -Technologies	Module 7 Fact or Fallacy		

## Japanese Beginners

	TASK 1	TASK 2	TASK 3	TASK 4	
Name of task	<i>School Life</i>	<i>Travelling in Japan</i>	<i>Future Plans</i>	<i>Trial HSC</i>	
Type of task	In-class test (Responding in English to written and aural texts) + oral interview in Japanese	In-class test (Responding in English to written and aural texts) + written task in Japanese	In-class test (Responding in English to written and aural texts) + oral interview in Japanese	Exam	
Date of task	<b>Term 4 Week 8</b>	<b>Term 1 Week 6</b>	<b>Term 2 Week 6</b>	<b>Term 3 Weeks 2-3</b>	
Outcomes assessed	1.1, 1.2, 1.3, 2.1, 2.2, 2.3, 2.4, 2.5,	2.1, 2.2, 2.3, 2.4, 2.5, 2.6, 3.1, 3.2, 3.3,	1.1, 1.2, 1.3, 2.1, 2.2, 2.3, 2.4, 2.5, 2.6	2.1, 2.2, 2.3, 2.4, 2.5, 2.6, 3.1, 3.2, 3.3, 3.4	
<b>Component</b>					<b>Weighting</b>
Listening	5	7	8	10	<b>30</b>
Reading	5	8	7	10	<b>30</b>
Speaking	10		10		<b>20</b>
Writing		10		10	<b>20</b>
<b>Total %</b>	<b>20</b>	<b>25</b>	<b>25</b>	<b>30</b>	<b>100</b>

## Course Calendar (120 Indicative Hours)

Week	Term 4	Term 1	Term 2	Term 3
<b>1</b>	<i>Introduction to HSC</i>		Japanese Schools	Recreation and Pastimes
<b>2</b>	Health and Sickness	Giving Directions	Japanese Schools	<b>Task 4 Trial HSC 30%</b>
<b>3</b>	Health and Sickness	Giving Directions	Your Day at School	Trial HSC
<b>4</b>	Your House	Shopping	Your Day at School	Recreation and Pastimes
<b>5</b>	Japanese Houses	Shopping	Classroom Expressions	Transport
<b>6</b>	Japanese Houses	Shopping	Part Time Work	Sightseeing
<b>7</b>	Neighbourhoods	Shopping	Further Education	The Weather
<b>8</b>	<b>Task 1 - 15%</b>	<b>Task 2 - 20% Year 12 FOCUS WEEK</b>	<b>Task 3 - 35%</b>	The Weather
<b>9</b>	Neighbourhoods	At a Restaurant	Professions and Work	The Weather
<b>10</b>	Asking and Giving Directions	Your School	Professions and Work	The Weather
<b>11</b>	Asking and Giving Directions	Your School		

## Legal Studies

	<b>TASK 1</b>	<b>TASK 2</b>	<b>TASK 3</b>	<b>TASK 4</b>	
Name of task	<i>Crime</i>	<i>Human Rights</i>	<i>Family</i>	<i>Trial HSC</i>	
Type of task	Topic Test	Short answer	In class extended response	Exam	
Date of task	<b>Term 4 Week 10</b>	<b>Term 1 Week 9</b>	<b>Term 2 Week 8</b>	<b>Term 3 Weeks 2-3</b>	
Outcomes assessed	H1, H3	H2, H6, H8	H4, H8	H5, H7, H9, H10	
<b>Component</b>					<b>Weighting</b>
Knowledge and understanding of course content	15	5	5	20	<b>45</b>
Analysis and evaluation	5	5	5	5	<b>20</b>
Inquiry and research		5	10		<b>15</b>
Communication of legal studies information issues and ideas in appropriate forms	5	5	5	5	<b>20</b>
<b>Total %</b>	<b>25</b>	<b>20</b>	<b>25</b>	<b>30</b>	<b>100</b>

## Course Calendar (120 Indicative Hours)

<b>Week</b>	<b>Term 4</b>	<b>Term 1</b>	<b>Term 2</b>	<b>Term 3</b>
<b>1</b>	<i>Introduction to HSC</i>		Family	Consumers
<b>2</b>	Crime	Human Rights	Family	<b>Task 4 Trial HSC 30%</b>
<b>3</b>	Crime	Human Rights	Family	<b>Trial HSC</b>
<b>4</b>	Crime	Human Rights	Family	Consumers
<b>5</b>	Crime	Human Rights	Family	Consumers
<b>6</b>	Crime	Human Rights	Family	Consumers
<b>7</b>	Crime	Human Rights	Family	Consumers
<b>8</b>	Crime	<b>Year 12 FOCUS WEEK</b>	<b>Task 3 - 25%</b>	Consumers
<b>9</b>	Crime	<b>Task 2 - 25%</b>	Family/Consumers	Consumers
<b>10</b>	<b>Task 1 - 20%</b>	Family	Consumers	Consumers
<b>11</b>	Crime	Family		

## Marine Studies

	<b>TASK 1</b>	<b>TASK 2</b>	<b>TASK 3</b>	<b>TASK 4</b>	
<b>Name of task</b>	<b><i>Boat licence and safety video</i></b>	<b><i>Marine communications licence</i></b>	<b><i>PIP</i></b>	<b><i>Food Practical</i></b>	
<b>Type of task</b>	Practical and video	Practical Test	Personal Interest Project	Practical	
<b>Date of task</b>	<b>Term 4 Week 7</b>	<b>Term 1 Week 9</b>	<b>Term 2 Week 10</b>	<b>Term 3 Week 4</b>	
<b>Outcomes assessed</b>	3.1 5.1 5.3 5.4	1.2 3.1 3.2 5.1	2.1 2.3 3.2 3.3 3.4	2.2 3.4 4.1	
<b>Component</b>					<b>Weighting</b>
Skills in Working Scientifically	10	15	10	15	<b>50</b>
Knowledge and Understanding	15	10	15	10	<b>50</b>
<b>Total %</b>	<b>25</b>	<b>25</b>	<b>25</b>	<b>25</b>	<b>100</b>

## Course Calendar (120 Indicative Hours)

<b>Week</b>	<b>Term 4</b>	<b>Term 1</b>	<b>Term 2</b>	<b>Term 3</b>
<b>1</b>	Boating and Seamanship		Personal Interest Project	Seafood Handling and Processing
<b>2</b>	Boating and Seamanship	Marine Communications	Personal Interest Project	<b>Trial</b>
<b>3</b>	Boating and Seamanship	Marine Communications	Personal Interest Project	<b>Trial</b>
<b>4</b>	Boating and Seamanship	Marine Communications	Personal Interest Project	<b>Task 4 – 25%</b>
<b>5</b>	Boating and Seamanship	Marine Communications	Personal Interest Project	Seafood Handling and Processing
<b>6</b>	Boating and Seamanship	Marine Communications	Personal Interest Project	Seafood Handling and Processing
<b>7</b>	Boating and Seamanship	Marine Communications	Personal Interest Project	Seafood Handling and Processing
<b>8</b>	Boating and Seamanship	Marine Communications	Personal Interest Project	Seafood Handling and Processing
<b>9</b>	<b>Task 1 – 25%</b>	<b>Task 2 – 25%</b>	Personal Interest Project	Seafood Handling and Processing
<b>10</b>	Boating and Seamanship	Marine Communications	<b>Task 3 – 25%</b>	Seafood Handling and Processing
<b>11</b>	Boating and Seamanship	Marine Communications		

## Mathematics Advanced

	<b>TASK 1</b>	<b>TASK 2</b>	<b>TASK 3</b>	<b>TASK 4</b>	
Name of task	<i>Investigation</i>	<i>Topic Review</i>	<i>Topic Review</i>	<i>Trial HSC</i>	
Type of task	Assignment	Written	Written	Exam	
Date of task	<b>Term 4 Week 8</b>	<b>Term 1 Week 8</b>	<b>Term 2 Week 7</b>	<b>Term 3 Weeks 2-3</b>	
Outcomes assessed	H1, H2, H3	H1, H2, H3, H4, H5	H1, H2, H3, H4, H5, H6, H7, H9	H1, H2, H3, H4, H5, H6, H7, H8, H9	
<b>Component</b>					<b>Weighting</b>
Concept, Skills & Techniques	10	15	10	15	<b>50</b>
Reasoning & Communication	10	15	10	15	<b>50</b>
<b>Total %</b>	<b>20</b>	<b>30</b>	<b>20</b>	<b>30</b>	<b>100</b>

## Course Calendar (120 Indicative Hours)

<b>Week</b>	<b>Term 4</b>	<b>Term 1</b>	<b>Term 2</b>	<b>Term 3</b>
<b>1</b>	<i>Introduction to HSC</i>		Correlation and regression	Continuous probability distributions
<b>2</b>	Sequences and series	Statistics	Correlation and regression	<b>Task 4 Trial HSC 30%</b>
<b>3</b>	Sequences and series	Statistics	Correlation and regression	<b>Trial HSC</b>
<b>4</b>	Transformations of functions	Geometrical applications of differentiation	Financial applications of sequences	Sequences and series
<b>5</b>	Transformations of functions	Geometrical applications of differentiation	Financial applications of sequences	Transformations of functions
<b>6</b>	Trigonometric functions	Geometrical applications of differentiation	Financial applications of sequences	Trigonometric functions
<b>7</b>	Trigonometric functions	Geometrical applications of differentiation	<b>Task 3 – 20%</b>	Further differentiation
<b>8</b>	<b>Task 1 – 20%</b>	<b>Task 2 – 30%</b> <b>Year 12 FOCUS WEEK</b>	Continuous probability distributions	Integration
<b>9</b>	Further differentiation	Integration	Continuous probability distributions	Revision
<b>10</b>	Further differentiation	Integration	Continuous probability distributions	Revision
<b>11</b>	Further differentiation	Integration		

## Mathematics Extension 1

	TASK 1	TASK 2	TASK 3	TASK 4	
Name of task	<b>Topic Review</b>	<b>Topic Review</b>	<b>Investigation</b>	<b>Trial HSC</b>	
Type of task	Written	Written	Assignment	Exam	
Date of task	<b>Term 4 Week 9</b>	<b>Term 1 Week 8</b>	<b>Term 2 Week 8</b>	<b>Term 3 Week 2-3</b>	
Outcomes assessed	ME12-1, ME12-2 ME12-3,	ME12-1, ME12-2 ME12-3, ME12-4 ME12-6	ME12-1, ME12-2 ME12-3, ME12-4 ME12-5, ME12-6 ME12-7	ME12-1, ME12-2 ME12-3, ME12-4 ME12-5, ME12-6 ME12-7	
<b>Component</b>					<b>Weighting</b>
Concepts, Skills & techniques	10	15	10	15	<b>50</b>
Reasoning and communication	10	15	10	15	<b>50</b>
<b>Total %</b>	<b>20</b>	<b>30</b>	<b>20</b>	<b>30</b>	<b>100</b>

## Course Calendar (60 Indicative Hours)

Week	Term 4	Term 1	Term 2	Term 3
<b>1</b>	Proof by mathematical induction		Further Vectors	Revision
<b>2</b>	Proof by mathematical induction	Derivative of inverse functions	Further Vectors	<b>Task 4 Trial HSC 30%</b>
<b>3</b>	Vectors	Derivative of inverse trigonometric functions	Differential Equation	<b>Trial HSC</b>
<b>4</b>	Vectors	Derivative of inverse trigonometric functions	Differential Equation	Vectors
<b>5</b>	Vectors	Further Integration	Differential Equation	Derivative of inverse functions
<b>6</b>	Vectors	Further Integration	Binomial Distributions	Differential Equation
<b>7</b>	Trigonometric Identities	Further Integration	Binomial Distributions	Binomial Distributions
<b>8</b>	Trigonometric Identities	<b>Task 2 – 30%</b>	<b>Task 3 20%</b>	Trigonometric Identities
<b>9</b>	<b>Task 1- 20%</b>	Further Integration	Binomial Distributions	Revision
<b>10</b>	Further Trigonometric Equations	Further Integration	Binomial Distributions	Revision
<b>11</b>	Further Trigonometric Equations	Further Integration		

## Mathematics Extension 2

	TASK 1	TASK 2	TASK 3	TASK 4	
Name of task	<b>Topic Review</b>	<b>Topic Review</b>	<b>Investigation</b>	<b>Trial HSC</b>	
Type of task	Written	Written	Assignment	Exam	
Date of task	<b>Term 4 Week 9</b>	<b>Term 1 Week 8</b>	<b>Term 2 Week 9</b>	<b>Term 3 Week 2-3</b>	
Outcomes assessed	MEX12-1 MEX12-2 MEX12-4 MEX12-7 MEX12-8	MEX12-1 MEX12-2 MEX12-3 MEX12-4 MEX12-5 MEX12-7 MEX12-8	MEX12-1 MEX12-2 MEX12-4 MEX12-5 MEX12-6 MEX12-7 MEX12-8	MEX12-1 MEX12-2 MEX12-3 MEX12-4 MEX12-5 MEX12-6 MEX12-7 MEX12-8	
<b>Component</b>					<b>Weighting</b>
Concepts, Skills & techniques	10	15	10	15	<b>50</b>
Reasoning and communication	10	15	10	15	<b>50</b>
<b>Total %</b>	<b>20</b>	<b>30</b>	<b>20</b>	<b>30</b>	<b>100</b>

## Course Calendar (60 Indicative Hours)

Week	Term 4	Term 1	Term 2	Term 3
1	Complex numbers		Further Mathematical Induction	Revision
2	Complex numbers	3D Vectors	Further Mathematical Induction	<b>Task 4 Trial HSC 30%</b>
3	Applying Complex numbers	3D Vectors	Further Mathematical Induction	<b>Trial HSC</b>
4	Applying Complex numbers	3D Vectors	Mechanics	Applying Complex numbers
5	Applying Complex numbers	Further Integration	Mechanics	Mathematical Proofs
6	Applying Complex numbers	Further Integration	Mechanics	3D Vectors
7	Applying Complex numbers	Further Integration	Mechanics	Further Integration
8	Mathematical Proofs	<b>Task 2 – 30%</b>	<b>Mechanics</b>	Further Mathematical Induction
9	<b>Task 1 – 20%</b>	Further Integration	<b>Task 3 – 20%</b>	Revision
10	Mathematical Proofs	Further Integration	Mechanics	Revision
11	Mathematical Proofs	Further Integration		

## Mathematics Standard 1

	TASK 1	TASK 2	TASK 3	TASK 4	
Name of task	<i>Investigation</i>	<i>Topic Review</i>	<i>Topic Review</i>	<i>Trial HSC</i>	
Type of task	Assignment	Written	Written	Exam	
Date of task	<b>Term 4 Week 8</b>	<b>Term 1 Week 8</b>	<b>Term 2 Week 5</b>	<b>Term 3 Weeks 2-3</b>	
Outcomes assessed	MS1-12-5, MS1-12-9MS1-12-10	MS1-12-3, MS1-12-8, MS1-12-9, MS1-12-10	MS1-12-3, MS1-12-8, MS1-12-9, MS1-12-10	MS1-12-3, MS1-12-8, MS1-12-9, MS1-12-10	
<b>Component</b>					<b>Weighting</b>
Understanding, Fluency and Communication	15	10	10	15	<b>50</b>
Problem Solving, Reasoning & justification	15	10	10	15	<b>50</b>
<b>Total %</b>	<b>30</b>	<b>20</b>	<b>20</b>	<b>30</b>	<b>100</b>

## Course Calendar (120 Indicative Hours)

Week	Term 4	Term 1	Term 2	Term 3
<b>1</b>	<i>Introduction to HSC</i>		Solutions of Linear Relationships	Depreciation & Loss
<b>2</b>	Rates	Networks and Paths	Solutions of Linear Relationships	<b>Task 4 Trial HSC 30%</b>
<b>3</b>	Rates	Networks and Paths	Solutions of Linear Relationships	<b>Trial HSC</b>
<b>4</b>	Rates	Investments	Further Statistical Analysis	Depreciation & Loss
<b>5</b>	Rates	Investments	<b>Task 3 - 20%</b>	Depreciation & Loss
<b>6</b>	Rates	Investments	Further Statistical Analysis	Graphs of Practical Situations
<b>7</b>	Networks and Paths	Investments	Scale Drawings	Graphs of Practical Situations
<b>8</b>	Networks and Paths	<b>Task 2 - 20% Year 12 FOCUS WEEK</b>	Scale Drawings	Graphs of Practical Situations
<b>9</b>	<b>Task 1 - 30%</b>	Right Angled Trigonometry	Scale Drawings	Graphs of Practical Situations
<b>10</b>	Networks and Paths	Right Angled Trigonometry	Depreciation & Loss	Revision
<b>11</b>	Networks and Paths	Right Angled Trigonometry		

## Mathematics Standard 2

	TASK 1	TASK 2	TASK 3	TASK 4	
Name of task	<i>Investigation</i>	<i>Topic Review</i>	<i>Topic Review</i>	<i>Trial HSC</i>	
Type of task	Assignment	Written	Written	Exam	
Date of task	<b>Term 4 Week 9</b>	<b>Term 1 Week 8</b>	<b>Term 2 Week 8</b>	<b>Term 3 Weeks 2-3</b>	
Outcomes assessed	MS2-12.5, MS2-12.9, MS2-12.10	MS2-12.4 MS2-12.5, MS2-12.8 MS2-12.9, MS2-12.10	MS2-12.4 MS2-12.5, MS2-12.6 MS2-12.8 MS2-12.9, MS2-12.10	MS2-12.4 MS2-12.5, MS2-12.6 MS2-12.8 MS2-12.9, MS2-12.10	
<b>Component</b>					<b>Weighting</b>
Understanding, Fluency and Communication	15	10	10	15	<b>50</b>
Problem Solving, Reasoning & justification	15	10	10	15	<b>50</b>
<b>Total %</b>	<b>30</b>	<b>20</b>	<b>20</b>	<b>30</b>	<b>100</b>

## Course Calendar (120 Indicative Hours)

Week	Term 4	Term 1	Term 2	Term 3
<b>1</b>	<i>Introduction to HSC</i>		Bivariate data Analysis Section 4	Revision
<b>2</b>	Working With Time	Investment & Loans	Bivariate data Analysis Section 4	<b>Task 4 Trial HSC 30%</b>
<b>3</b>	Budgeting & Household Expenses	Investment & Loans	Bivariate data Analysis Section 4	<b>Trial HSC</b>
<b>4</b>	Rates and Ratios	Non Right Angled Trigonometry	Annuities	Normal Distribution
<b>5</b>	Rates and Ratios	Non Right Angled Trigonometry	Annuities	Normal Distribution
<b>6</b>	Rates and Ratios	Non Right Angled Trigonometry	Annuities	Normal Distribution
<b>7</b>	Network Concepts	Non Right Angled Trigonometry	Non Linear Relationships	Critical Path Analysis
<b>8</b>	Network Concepts	<b>Task 2 Topic Review 20% Year 12 FOCUS WEEK</b>	<b>Task 3 Assignment 20%</b>	Critical Path Analysis
<b>9</b>	<b>Task 1 Assignment 30%</b>	Simultaneous Equations	Non Linear Relationships	Critical Path Analysis
<b>10</b>	Network Concepts	Simultaneous Equations	Non Linear Relationships	Revision
<b>11</b>	Network Concepts	Simultaneous Equations		

## Modern History

	<b>TASK 1</b>	<b>TASK 2</b>	<b>TASK 3</b>	<b>TASK 4</b>	
Name of task	<b><i>Power &amp; Authority in the Modern World 1919-1946</i></b>	<b><i>Peace &amp; Conflict: Conflict in Europe</i></b>	<b><i>National Study: Russia</i></b>	<b><i>Trial HSC</i></b>	
Type of task	Source Bank Annotations & Analysis	In-Class Essay	Historical Analysis: Contentious Perspectives Folio	Exam	
Date of task	<b>Term 4 Week 9</b>	<b>Term 1 Week 9</b>	<b>Term 2 Week 9</b>	<b>Term 3 Weeks 2-3</b>	
Outcomes assessed	MH12-6 MH12-7 MH12-9	MH12-1 MH12-2 MH12-3 MH12-5 MH12-9	MH12-4 MH12-6 MH12-8 MH12-9	All Outcomes	
<b>Component</b>					<b>Weighting</b>
Knowledge and understanding of course content	5	10	5	20	<b>40</b>
Historical skills in the analysis and evaluation of sources and interpretations	5		10	5	<b>20</b>
Historical inquiry and research	5	5	10		<b>20</b>
Communication of historical understanding in appropriate forms	5	5	5	5	<b>20</b>
<b>Total %</b>	<b>20</b>	<b>20</b>	<b>30</b>	<b>30</b>	<b>100</b>

## Course Calendar (120 Indicative Hours)

<b>Week</b>	<b>Term 4</b>	<b>Term 1</b>	<b>Term 2</b>	<b>Term 3</b>
<b>1</b>	<i>Introduction to HSC</i>		National Study: Russia	Revision
<b>2</b>	Power & Authority	Peace & Conflict: Europe	National Study: Russia	<b>Task 4 Trial HSC 30%</b>
<b>3</b>	Power & Authority	Peace & Conflict: Europe	Change in the Modern World: South Africa	<b>Trial HSC</b>
<b>4</b>	Power & Authority	Peace & Conflict: Europe	Change in the Modern World: South Africa	Revision Power & Authority
<b>5</b>	Power & Authority	Peace & Conflict: Europe	Change in the Modern World: South Africa	Revision Power & Authority
<b>6</b>	Power & Authority	Peace & Conflict: Europe	Change in the Modern World: South Africa	Revision Peace & Conflict: Europe
<b>7</b>	Power & Authority	Peace & Conflict: Europe	Change in the Modern World: China	Revision Peace & Conflict: Europe
<b>8</b>	Power & Authority	<b>Year 12 FOCUS WEEK</b>	Change in the Modern World: South Africa	Revision National Study: Russia
<b>9</b>	<b>Task 1 - 20%</b>	<b>Task 2 - 20%</b>	<b>Task 3 - 30%</b>	Revision Change in the Modern World: South Africa
<b>10</b>	Peace & Conflict: Europe	National Study: Russia	Change in the Modern World: South Africa	Revision Change in the Modern World: South Africa
<b>11</b>	Peace & Conflict: Europe	National Study: Russia		

## Music 1

	TASK 1	TASK 2	TASK 3	TASK 4	
Name of task	<b>Core Performance "Twilight Night" &amp; Aural Analysis</b>	<b>Composition Portfolio &amp; Viva Voce</b>	<b>Core Performance &amp; Elective Options</b>	<b>Trial HSC</b>	
Type of task	Performance	Composition & Musicology	Presentation of Performance	Exam	
Date of task	<b>Term 4 Week 8</b>	<b>Term 1 Weeks 9-10</b>	<b>Term 2 Week 10</b>	<b>Term 3 Weeks 2-3</b>	
Outcomes assessed	H1, H2, H5, H6, H7, H8, H9, H10, H11	H1, H2, H3, H4, H5, H6, H7, H8, H9, H10, H11	Musicology: H2, H4, H5, H6, H7, H11 Performance: H1, H2, H5, H7, H9, H11 Composition: H2, H3, H4, H5, H6, H7, H8, H10, H11	H4, H5, H6, H7, H8, H10, H11	
<b>Component</b>					<b>Weighting</b>
<b>Performance</b>	10				<b>10</b>
<b>Composition</b>		10			<b>10</b>
<b>Musicology</b>		10			<b>10</b>
<b>Aural</b>	10			15	<b>25</b>
<b>Electives</b>			30	15	<b>45</b>
<b>Total %</b>	<b>20</b>	<b>20</b>	<b>30</b>	<b>30</b>	<b>100</b>

## Course Calendar (120 Indicative Hours)

Week	Term 4	Term 1	Term 2	Term 3
<b>1</b>	<i>Introduction to HSC</i>		20 <sup>th</sup> & 21 <sup>st</sup> Century Music	Revision
<b>2</b>	Music for Radio, Film, Television & Multimedia - Performance	Independent Research	20 <sup>th</sup> & 21 <sup>st</sup> Century Music	<b>Task 4 Trial HSC 30%</b>
<b>3</b>	Music for Radio, Film, Television & Multimedia - Performance	Independent Research	20 <sup>th</sup> & 21 <sup>st</sup> Century Music	<b>Trial HSC</b>
<b>4</b>	Music for Radio, Film, Television & Multimedia - Performance	Independent Research	20 <sup>th</sup> & 21 <sup>st</sup> Century Music	Performance revision
<b>5</b>	Music for Radio, Film, Television & Multimedia - Performance	Independent Research	20 <sup>th</sup> & 21 <sup>st</sup> Century Music	Performance revision
<b>6</b>	Music for Radio, Film, Television & Multimedia - Performance	Independent Research	20 <sup>th</sup> & 21 <sup>st</sup> Century Music	Performance revision
<b>7</b>	Music for Radio, Film, Television & Multimedia - Performance	Independent Research	20 <sup>th</sup> & 21 <sup>st</sup> Century Music	Performance revision
<b>8</b>	<b>Task 1 20%</b>	<b>Year 12 FOCUS WEEK</b>	20 <sup>th</sup> & 21 <sup>st</sup> Century Music	Revision
<b>9</b>	Music for Radio, Film, Television & Multimedia - Performance	<b>Task 2 20%</b>	20 <sup>th</sup> & 21 <sup>st</sup> Century Music	Revision
<b>10</b>	Music for Radio, Film, Television & Multimedia - Performance	<b>Task 2 cont.</b>	<b>Task 3 30%</b>	Revision
<b>11</b>	Music for Radio, Film, Television & Multimedia - Performance	Independent Research		

## Personal Development, Health and Physical Education

	TASK 1	TASK 2	TASK 3	TASK 4	
<b>Name of task</b>	<i><b>Examining Australian Sport</b></i>	<i><b>Diabetes in Australia</b></i>	<i><b>Planning for the City to Surf</b></i>	<i><b>HSC Trial</b></i>	
<b>Type of task</b>	Investigation Task	Research Report	Case Study Analysis	Exam	
<b>Date of task</b>	<b>Term 4 Week 9</b>	<b>Term 1 Week 10</b>	<b>Term 2 Week 9</b>	<b>Term 3 Week 2-3</b>	
<b>Outcomes assessed</b>	H12, H16	H1, H2, H4, H15	H7, H10, H11	H5, H12, H14, H16, H17	
<b>Component</b>					<b>Weighting</b>
Knowledge and understanding of course content	5	10	10	15	<b>40</b>
Skills in critical thinking, research, analysis and communicating	10	20	20	10	<b>60</b>
<b>Total %</b>	<b>15</b>	<b>30</b>	<b>30</b>	<b>25</b>	<b>100</b>

## Course Calendar (120 Indicative Hours)

Week	Term 4	Term 1	Term 2	Term 3
1	Introduction to HSC		Factors Affecting Performance	Improving Performance
2	Sport and Physical Activity in Australian Society	Health Priorities in Australia	Factors Affecting Performance	<b>Task 4 Trial HSC 30%</b>
3	Sport and Physical Activity in Australian Society	Health Priorities in Australia	Factors Affecting Performance	<b>Trial HSC</b>
4	Sport and Physical Activity in Australian Society	Health Priorities in Australia	Factors Affecting Performance	Improving Performance
5	Sport and Physical Activity in Australian Society	Health Priorities in Australia	Factors Affecting Performance	Improving Performance
6	Sport and Physical Activity in Australian Society	Health Priorities in Australia	Factors Affecting Performance	Improving Performance
7	Sport and Physical Activity in Australian Society	Health Priorities in Australia	Factors Affecting Performance	Improving Performance
8	Sport and Physical Activity in Australian Society	<b>Year 12 FOCUS WEEK</b>	Factors Affecting Performance	Improving Performance
9	<b>Task 1 – 10%</b>	Health Priorities in Australia	<b>Task 3 – 30%</b>	Improving Performance
10	Sport and Physical Activity in Australian Society	<b>Task 2 – 30%</b>	Factors Affecting Performance	<b>Revision</b>
11	Sport and Physical Activity in Australian Society	Health Priorities in Australia		

## Photography

	<b>TASK 1</b>	<b>TASK 2</b>	<b>TASK 3</b>	<b>TASK 4</b>	
Name of task	<b>Artmaking Review</b>	<b>Portraiture Practices</b>	<b>Temporal Accounts</b>	<b>Exam &amp; Folio Submission</b>	
Type of task	"Re-Imagine" Digital practices task	Curated portfolio & written response	Field work: Practical task	Final portfolio + website of curated images & related exam	
Date of task	<b>Term 4 Week 9</b>	<b>Term 1 Week 10</b>	<b>Term 2 Week 8</b>	<b>Term 3 Week 6</b>	
Outcomes assessed	M1, M2, M3, M4, M5, CH1, CH2, CH3	M1, M3, M4, M5, CH1, CH2, CH3, CH4	M1, M2, M3, M4, M5, CH1, CH2, CH3, CH4, CH5	M1, M2, M3, M4, M5, CH4, CH5	
<b>Component</b>					<b>Weighting</b>
<b>Artmaking</b>	15	15	15	25	<b>70</b>
<b>Study of Photography</b>	10	10		10	<b>30</b>
<b>Total %</b>	<b>25</b>	<b>25</b>	<b>15</b>	<b>35</b>	<b>100</b>

## Course Calendar (120 Indicative Hours)

<b>Week</b>	<b>Term 4</b>	<b>Term 1</b>	<b>Term 2</b>	<b>Term 3</b>
<b>1</b>	<i>Introduction to HSC</i>		Temporal Accounts	Portfolio Review & Post Production
<b>2</b>	Commence Course: Digital Modules	Commence Portraiture Artmaking & Study	Temporal Accounts	<b>Trial HSC</b>
<b>3</b>	Digital Modules	Portraiture Study of Photography	Field Trip (Cairns)	<b>Trial HSC</b>
<b>4</b>	Commence What Is It? Artmaking & Study	Portraiture	Temporal Accounts	Portfolio Production
<b>5</b>	What Is It?	Portraiture	Temporal Accounts	Portfolio Production
<b>6</b>	What Is It?	Portraiture	Temporal Accounts	<b>Task 4 HSC Folio Submission 35%</b>
<b>7</b>	What Is It?	Portraiture, Curating images	Field Trip (Sydney)	Portfolio Review & Evaluation
<b>8</b>	What Is It?	<b>Year 12 FOCUS WEEK</b>	<b>Task 3 Portfolio Review and Research 15%</b>	Time Based Forms
<b>9</b>	<b>Task 1 Portfolio Review and Research 25%</b>	Portraiture, Curating images	Evaluation & curation	Time Based Forms
<b>10</b>	Evaluation & curation	<b>Task 2 Portfolio Review and Research 25%</b>	Portfolio Review & Post Production	Time Based Forms
<b>11</b>	Evaluation & curation	Commence Temporal Accounts		

## Physics

	<b>TASK 1</b>	<b>TASK 2</b>	<b>TASK 3</b>	<b>TASK 4</b>	
Name of task	<b><i>Depth Study</i></b>	<b><i>Practical</i></b>	<b><i>Module Revision</i></b>	<b><i>Trial HSC</i></b>	
Type of task	Depth Study/Quiz	Practical	Module Test	Exam	
Date of task	<b>Term 4 Week 10</b>	<b>Term 1 Week 8</b>	<b>Term 2 Week 8</b>	<b>Term 3 Week 2 &amp; 3</b>	
Outcomes assessed	PH11/12-1 PH11/12-4 PH11/12-6 PH12-7 PH12-13	PH11/12-2 PH11/12-1 PH11/12-5 PH12-6 PH12-12	PH11/12-5 PH11/12-6 PH12-13 PH12-14 PH12-15	PH11/12-4 PH12-12 PH12-13 PH12-14 PH12-16	
<b>Component</b>					<b>Weighting</b>
Skills in Working Scientifically	15	15	10	15	<b>55</b>
Knowledge and Understanding	15	5	10	15	<b>45</b>
<b>Total %</b>	<b>20</b>	<b>30</b>	<b>20</b>	<b>30</b>	<b>100</b>

## Course Calendar (120 Indicative Hours)

<b>Week</b>	<b>Term 4</b>	<b>Term 1</b>	<b>Term 2</b>	<b>Term 3</b>
<b>1</b>	<i>Introduction to HSC</i>		Module 7-From the universe to the atom	Module 8-The Nature of Light
<b>2</b>	Scientific Skills	Module 5-Advanced Mechanics	Module 7-From the universe to the atom	<b>Task 4 Trial HSC 30%</b>
<b>3</b>	HSC Introduction Module 6- Electromagnetism	Module 5-Advanced Mechanics	Module 7-From the universe to the atom	<b>Trial HSC</b>
<b>4</b>	Module 6- Electromagnetism	Module 5-Advanced Mechanics	Module 7-From the universe to the atom	Module 8-The Nature of Light
<b>5</b>	Module 6- Electromagnetism	Module 5-Advanced Mechanics	Module 7-From the universe to the atom	Module 8-The Nature of Light
<b>6</b>	Module 6- Electromagnetism	Module 5-Advanced Mechanics	Module 8-The Nature of Light	Module 8-The Nature of Light
<b>7</b>	Module 6- Electromagnetism	Module 5-Advanced Mechanics	Module 8-The Nature of Light	Trial HSC Revision
<b>8</b>	Module 6- Electromagnetism	<b>Task 2 – 30%Year 12 FOCUS WEEK</b>	<b>Task 3- - 20%</b>	Trial HSC Revision
<b>9</b>	Module 6- Electromagnetism	Module 5-Advanced Mechanics	Module 8-The Nature of Light	Trial HSC Revision
<b>10</b>	<b>Task 1 – 20%</b>	<b>Task 2 – 30%</b>	Module 8-The Nature of Light	
<b>11</b>	Module 5-Advanced Mechanics	Module 7- From the universe to the atom		

## Society and Culture

	<b>TASK 1</b>	<b>TASK 2</b>	<b>TASK 3</b>	<b>TASK 4</b>	
Name of task	<i>PIP Presentation and Proposal</i>	<i>Depth Study 1 Belief Systems and Ideologies</i>	<i>Depth Study 2 Popular Culture</i>	<i>Trial HSC</i>	
Type of task	Multimodal task	Research and structured responses	Research and in-class responses	Exam	
Date of task	<b>Term 4 Week 7</b>	<b>Term 1 Week 9</b>	<b>Term 2 Week 8</b>	<b>Term 3 Weeks 2-3</b>	
Outcomes assessed	H6, H7, H8, H9	H1, H2, H3, H4, H5, H6, H7, H9, H10	H1, H2, H4, H5, H7, H9, H10	H1, H2, H3, H4, H5, H6, H7, H10	
<b>Component</b>					<b>Weighting</b>
Knowledge and understanding of course content		10	20	20	<b>50</b>
Application and evaluation of social and cultural research methods	10		10	10	<b>30</b>
Communication of information, issues and ideas in appropriate forms	10	10			<b>20</b>
<b>Total %</b>	<b>20</b>	<b>20</b>	<b>30</b>	<b>30</b>	<b>100</b>

Note: Since the final project will be assessed externally, no part of the product is to be assessed as part of the school assessment program. The Personal Interest Project (PIP) process, however, may be assessed.

## Course Calendar (120 Indicative Hours)

<b>Week</b>	<b>Term 4</b>	<b>Term 1</b>	<b>Term 2</b>	<b>Term 3</b>
<b>1</b>	<i>Introduction to HSC</i>		Depth Study 1	Depth Study 2
<b>2</b>	Personal Interest Project	Social Continuity and Change	Depth Study 1	<b>Task 4 Trial HSC 30%</b>
<b>3</b>	Personal Interest Project	Social Continuity and Change	Depth Study 1	<b>Trial HSC + PIP SUBMISSION TO NESA</b>
<b>4</b>	Personal Interest Project	Social Continuity and Change	Depth Study 1	Depth Study 2
<b>5</b>	Personal Interest Project	Social Continuity and Change	Depth Study 1	Depth Study 2
<b>6</b>	Personal Interest Project	Social Continuity and Change	Depth Study 1	Depth Study 2
<b>7</b>	<b>Task 1 - 20%</b>	Social Continuity and Change	Depth Study 1	Depth Study 2
<b>8</b>	Personal Interest Project	<b>Year 12 FOCUS WEEK</b>	<b>Task 3 - 30%</b>	Depth Study 2
<b>9</b>	Personal Interest Project	<b>Task 2 - 20%</b>	Depth Study 2	Depth Study 2
<b>10</b>	Social Continuity and Change	Depth Study 1	Depth Study 2	Depth Study 2
<b>11</b>	Social Continuity and Change	Depth Study 1		

## Software Design and Development

	TASK 1	TASK 2	TASK 3	TASK 4	
Name of task	<i>Topic Test</i>	<i>Mini Project</i>	<i>Major Software Project</i>	<i>Trial HSC</i>	
Type of task	Written	Written/ Practical	Written/ Practical	Exam	
Date of task	<b>Term 4 Week 8</b>	<b>Term 1 Week 8</b>	<b>Term 2 Week 10</b>	<b>Term 3 Weeks 2-3</b>	
Outcomes assessed	H1.1, H1.3	H1.1, H2.1, H2.2	H4.3, H6.1, H6.2, H6.3, H6.4	H3.1, H3.2, H4.1, H4.2	
<b>Component</b>					<b>Weighting</b>
Knowledge and understanding of course content.	10	10	10	20	<b>50</b>
Knowledge and skills in the design and development of software solutions	5	15	20	10	<b>15</b>
<b>Total %</b>	<b>15</b>	<b>25</b>	<b>30</b>	<b>30</b>	<b>100</b>

## Course Calendar (120 Indicative Hours)

Week	Term 4	Term 1	Term 2	Term 3
<b>1</b>	<i>Introduction to HSC</i>		Implementation of Software solutions	Revision
<b>2</b>	The Interrelation between Software and Hardware	Planning & Design of Software Solutions	Implementation of Software solutions	<b>Task 4 Trial HSC 30%</b>
<b>3</b>	The Interrelation between Software and Hardware	Planning & Design of Software Solutions	Maintenance of Software Solutions	<b>Trial HSC</b>
<b>4</b>	The Interrelation between Software and Hardware	Design of Software Solutions	Maintenance of Software Solutions	Exam Review
<b>5</b>	The Interrelation between Software and Hardware	Design of Software Solutions	Maintenance of Software Solutions	Revision
<b>6</b>	The Interrelation between Software and Hardware	Design of Software Solutions	Developing a Software package	Revision
<b>7</b>	The Interrelation between Software and Hardware	Design of Software Solutions	Developing a Software package	Revision
<b>8</b>	<b>Task 1 - 15%</b>	<b>Task 2: - 25% Year 12 FOCUS WEEK</b>	Developing a Software package	Revision
<b>9</b>	Defining & Understanding the problem	Implementation of Software solutions	Developing a Software package	Revision
<b>10</b>	Defining & Understanding the problem	Implementation of Software solutions	<b>Task 3 - 30%</b>	Revision
<b>11</b>	Defining & Understanding the problem	Implementation of Software solutions		

## Sport, Lifestyle and Recreation

	<b>TASK 1</b>	<b>TASK 2</b>	<b>TASK 3</b>	<b>TASK 4</b>	
Name of task	<b><i>Aquatics - Water Safety Theory</i></b>	<b><i>Games + Sports #1</i></b>	<b><i>Sports Injuries and Resistance Training</i></b>	<b><i>Games + Sports #2</i></b>	
Type of task	Practical Testing	Practical Review	Topic Task	Practical Review	
Date of task	<b>Term 4 Week 9</b>	<b>Term 1 Week 9</b>	<b>Term 2 Week 9</b>	<b>Term 3 Week 6</b>	
Outcomes assessed	1.3, 3.1, 4.4, 4.5	1.1, 2.3, 5.2, 5.3	2.1, 2.5, 3.2, 3.6	2.3, 5.2, 5.3, 5.5	
<b>Component</b>					<b>Weighting</b>
Knowledge and understanding	20	5	20	5	<b>50</b>
Skills	10	15	10	15	<b>50</b>
<b>Total %</b>	<b>30</b>	<b>20</b>	<b>30</b>	<b>20</b>	<b>100</b>

## Course Calendar (120 Indicative Hours)

<b>Week</b>	<b>Term 4</b>	<b>Term 1</b>	<b>Term 2</b>	<b>Term 3</b>
<b>1</b>	<i>Introduction to HSC</i>		Resistance Training	Social Perspectives of Games and Sports
<b>2</b>	Aquatics	Sports Injuries	Resistance Training	<b>Trial HSC</b>
<b>3</b>	Aquatics	Sports Injuries	Resistance Training	<b>Trial HSC</b>
<b>4</b>	Aquatics	Sports Injuries	Resistance Training	Social Perspectives of Games and Sports
<b>5</b>	Aquatics	Sports Injuries	Resistance Training	Social Perspectives of Games and Sports
<b>6</b>	Aquatics	Sports Injuries	Resistance Training	<b>Task 4 20%</b>
<b>7</b>	Aquatics	Sports Injuries	Resistance Training	Social Perspectives of Games and Sports
<b>8</b>	Aquatics	<b>Year 12 FOCUS WEEK</b>	Resistance Training	Social Perspectives of Games and Sports
<b>9</b>	<b>Task 1 30%</b>	<b>Task 2 20%</b>	<b>Task 3 30%</b>	Social Perspectives of Games and Sports
<b>10</b>	Aquatics	Sports Injuries	Revision/ Feedback	Social Perspectives of Games and Sports
<b>11</b>	Revision/ Feedback	Sports Injuries		

## Studies of Religion II

	<b>TASK 1</b>	<b>TASK 2</b>	<b>TASK 3</b>	<b>TASK 4</b>	
Name of task	<i>Religion and Belief System – Post 1945 + Religious Depth Studies</i>	<i>Religious Depth Studies</i>	<i>Religion and Peace</i>	<i>Trial HSC</i>	
Type of task	Topic Test	Written Response	Research Task	Exam	
Date of task	<b>Term 4 Week 9</b>	<b>Term 1 Week 9</b>	<b>Term 2 Week 8</b>	<b>Term 3 Weeks 2-3</b>	
Outcomes assessed	H1, H2, H3	H4, H5, H6, H8	H2,H7, H8, H9	H1, H3, H4, H5	
<b>Component</b>					<b>Weighting</b>
Knowledge and Understanding of course content	5	10	5	20	<b>40</b>
Source based skills	5	5		10	<b>20</b>
Investigation and research	5	5	10		<b>20</b>
Communication of information		5	5	10	<b>20</b>
<b>Total %</b>	<b>15</b>	<b>25</b>	<b>20</b>	<b>40</b>	<b>100</b>

## Course Calendar (120 Indicative Hours)

<b>Week</b>	<b>Term 4</b>	<b>Term 1</b>	<b>Term 2</b>	<b>Term 3</b>
<b>1</b>	<i>Introduction to HSC</i>		Religious Depth Study 3	Religion and Non Religion
<b>2</b>	Religion and Belief System – Post 1945	Religious Depth Study 2	Religious Depth Study 3	<b>Task 4 Trial HSC 40%</b>
<b>3</b>	Religion and Belief System – Post 1945	Religious Depth Study 2	Religious Depth Study 3	Trial HSC
<b>4</b>	Religion and Belief System – Post 1945	Religious Depth Study 2	Religion and Peace	Religion and Non Religion
<b>5</b>	Religion and Belief System – Post 1945	Religious Depth Study 2	Religion and Peace	Religion and Non Religion
<b>6</b>	Religion and Belief System – Post 1945	Religious Depth Study 2	Religion and Peace	Religion and Non Religion
<b>7</b>	Religious Depth Study 1	Religious Depth Study 3	Religion and Peace	Religion and Non Religion
<b>8</b>	Religious Depth Study 1	<b>Year 12 FOCUS WEEK</b>	<b>Task 3 - 20%</b>	Religion and Non Religion
<b>9</b>	<b>Task 1 - 15%</b>	<b>Task 2 - 25%</b>	Religion and Peace	Revision
<b>10</b>	Religious Depth Study 1	Religious Depth Study 3	Religion and Non Religion	Revision
<b>11</b>	Religious Depth Study 1	Religious Depth Study 3		

## Textiles and Design

	TASK 1	TASK 2	TASK 3	TASK 4	
Name of task	<i>Major Textiles Project – Designing and Planning</i>	<i>Contemporary Designer Case Study</i>	<i>Major Textiles Project – Development and Management</i>	<i>Trial HSC</i>	
Type of task	Written & Presentation	Written	Report	Exam	
Date of task	<b>Term 4 Week 8</b>	<b>Term 1 Week 2</b>	<b>Term 2 Week 4</b>	<b>Term 3 Weeks 2-3</b>	
Outcomes assessed	H1.3, H2.1, H6.1	H3.1, H3.2, H4.1, H5.1	H1.1, H1.2, H2.2, H3.1, H4.2	H1.3, 3.1, H3.2, H4.1, H5.2, H6.1	
<b>Component</b>					<b>Weighting</b>
Knowledge and understanding of textiles and the textile industry	10	10		30	<b>50</b>
Skills in design, manipulation, experimentation, analysis, manufacture and selection of textiles for specific end purposes using appropriate technologies	15	15	20		<b>50</b>
<b>Total %</b>	<b>25</b>	<b>25</b>	<b>20</b>	<b>20</b>	<b>100</b>

## Course Calendar (120 Indicative Hours)

Week	Term 4	Term 1	Term 2	Term 3
<b>1</b>	<i>Introduction to HSC</i>		Properties and Performance of Textiles	Revision
<b>2</b>	Major Textile Project	<b>Task 2 25%</b>	Properties and Performance of Textiles	<b>Task 4 Trial HSC 30%</b>
<b>3</b>	Design	Design	Properties and Performance of Textiles	<b>Trial HSC</b>
<b>4</b>	Design + MTP	Design	<b>Task 3 MTP Report 20%</b>	<b>HSC MTP DUE</b>
<b>5</b>	Design + MTP	Design	Properties and Performance of Textiles	Properties and Performance of Textiles
<b>6</b>	<b>Task 1 Project Proposal 25%</b>	Properties and Performance of Textiles	Australian Textile, Clothing, Footwear and Allied Industries	Australian Textile, Clothing, Footwear and Allied Industries
<b>7</b>	Design + MTP	Properties and Performance of Textiles	Australian Textile, Clothing, Footwear and Allied Industries	Properties and Performance of Textiles
<b>8</b>	Design + MTP	<b>Year 12 FOCUS WEEK</b>	Australian Textile, Clothing, Footwear and Allied Industries	Australian Textile, Clothing, Footwear and Allied Industries
<b>9</b>	Design + MTP	Properties and Performance of Textiles	Australian Textile, Clothing, Footwear and Allied Industries	Revision
<b>10</b>	Australian Textile, Clothing, Footwear and Allied Industries	Properties and Performance of Textiles	Australian Textile, Clothing, Footwear and Allied Industries	Revision
<b>11</b>	Major Textile Project	Properties and Performance of Textiles		

## Visual Arts

	<b>TASK 1</b>	<b>TASK 2</b>	<b>TASK 3</b>	<b>TASK 4</b>	
Name of task	<b>Art Practice</b>	<b>Artworks beyond studio spaces</b>	<b>Body of Work</b>	<b>Trial HSC</b>	
Type of task	Artmaking Presentation & related Written Response	Study of Art Research & In Class Essay	Artmaking Submission & Review	Exam	
Date of task	<b>Term 1 Week 5</b>	<b>Term 2 Week 6</b>	<b>Term 3 Week 1</b>	<b>Term 3 Weeks 2-3</b>	
Outcomes assessed	H1, H2, H3, H4, H7, H8, H9	H7, H8, H10	H1, H2, H3, H4, H5, H6	H7, H8, H9, H10	
<b>Component</b>					<b>Weighting</b>
<b>Artmaking</b>	20		30		<b>50</b>
<b>Critical &amp; Historical Study</b>	10	20		20	<b>50</b>
<b>Total %</b>	<b>30</b>	<b>20</b>	<b>30</b>	<b>20</b>	<b>100</b>

## Course Calendar (120 Indicative Hours)

<b>Week</b>	<b>Term 4</b>	<b>Term 1</b>	<b>Term 2</b>	<b>Term 3</b>
<b>1</b>	Introduction to HSC		Case Study 4 Study of Art	<b>Task 3 Artmaking Submission &amp; Review 20%</b>
<b>2</b>	Introduction to HSC Art	Case Study 2	Body of work development	<b>Task 4 Trial HSC 20%</b>
<b>3</b>	Artmaking strategies, Study of Art	Artmaking & Study of Art	Body of work development	Trial HSC
<b>4</b>	Artmaking strategies, Study of Art	Artmaking & Study of Art	Field Trip TBC	Body of work completion
<b>5</b>	Sculpture By The Sea Excursion Artmaking strategies	<b>Task 1 Body of Work Process, Presentation and Written Response 20%</b>	Body of work development	Body of work completion
<b>6</b>	Case Study 1 & Field Trip, Artmaking strategies	Art Express Excursion	<b>Task 2 In class essay 20%</b>	Body of work completion
<b>7</b>	Artmaking strategies	Case Study 3 Study of art	Body of work development, Study of Art	<b>HSC NESA B.O.W. SUBMISSION &amp; Art Breakfast Exhibition</b>
<b>8</b>	Bundanon Excursion, Artmaking strategies	<b>Year 12 FOCUS WEEK</b>	Body of work development, Study of Art	Case Study 5
<b>9</b>	B.O.W.* Review & Commencement Plan	Body of work development, Study of Art	Body of work development, Study of Art	Study of Art
<b>10</b>	B.O.W. Review & Commencement Plan	Art Express Excursion, Study of Art	Body of work development, Study of Art	Revision
<b>11</b>	B.O.W. Review & Commencement Plan	Body of work development		

## Visual Design

	TASK 1	TASK 2	TASK 3	TASK 4	
Name of task	<i>Character Design</i>	<i>Product Design</i>	<i>Major Project</i>	<i>Design Portfolio</i>	
Type of task	Practical and research	Practical and research	Individual Design Project	Individual Portfolio Review	
Date of task	<b>Term 4 Week 10</b>	<b>Term 1 Week 10</b>	<b>Term 2 Week 10</b>	<b>Term 3 Week 7</b>	
Outcomes assessed	DM1, DM2, DM3, DM4, DM5, DM6, CH1, CH2, CH3, CH4	DM1, DM2, DM3, DM4, DM5, DM6, CH1, CH2, CH3, CH4	DM1, DM3, DM4, DM5 & CH1, CH2	DM1, DM2, DM3, DM4, DM5, DM6	
<b>Component</b>					<b>Weighting</b>
Knowledge, skills & understanding through the making of works in design that lead to & demonstrate conceptual & technical accomplishment	15	15	20	20	<b>70</b>
Knowledge, skills & understanding that lead to increasingly accomplished critical & historical investigations of design	10	10	10		<b>30</b>
<b>Total %</b>	<b>25</b>	<b>25</b>	<b>30</b>	<b>20</b>	<b>100</b>

## Course Calendar (120 Indicative Hours)

Week	Term 4	Term 1	Term 2	Term 3
<b>1</b>	<i>Introduction to HSC</i>		Project overview	Curated Portfolio
<b>2</b>	Project overview	Adobe Flash Tutorials	Project Brief	<b>Trial HSC</b>
<b>3</b>	Adobe Illustrator tutorials	Single layer unidirectional	Research	Trial HSC
<b>4</b>	Working sketches	Single layer multiple direction	Ghent chart development	Curated Portfolio
<b>5</b>	Project Development	Static BGD with Multiple direction	Development of Brief	Curated Portfolio
<b>6</b>	Project Development	Storyboarding	Project Development	Curated Portfolio
<b>7</b>	Project Development	Animation	Project Development	<b>Task 4 Portfolio Submission 30%</b>
<b>8</b>	Project Development	<b>Year 12 FOCUS WEEK</b>	Project Development	Revision
<b>9</b>	Project Development	Animation	Project Development	Revision
<b>10</b>	<b>Task 1 Practical and Research 25%</b>	<b>Task 2 Practical and Research 25%</b>	<b>Task 3 Design Project 30%</b>	Revision
<b>11</b>	Project overview	Animation		

## Work Studies

	<b>TASK 1</b>	<b>TASK 2</b>	<b>TASK 3</b>	<b>TASK 4</b>	
Name of task	<i>Training Package</i>	<i>Personal Finance</i>	<i>Student Choice</i>	<i>Interview</i>	
Type of task	Own Choice	Test	Series of Activities	Complete an interview for a job	
Date of task	<b>Term 4 Week 8</b>	<b>Term 1 Week 9</b>	<b>Term 2 Week 8</b>	<b>Term 3 Week 4</b>	
Outcomes assessed	2, 5, 7	4, 5, 7, 8, 9	3, 4, 8, 9	1, 2, 3, 4, 5, 6, 7, 8, 9	
<b>Component</b>					<b>Weighting</b>
Knowledge and Understanding	15	5	5	5	<b>30</b>
Skills	10	20	20	20	<b>70</b>
<b>Total %</b>	<b>25</b>	<b>25</b>	<b>25</b>	<b>25</b>	<b>100</b>

## Course Calendar (120 Indicative Hours)

<b>Week</b>	<b>Term 4</b>	<b>Term 1</b>	<b>Term 2</b>	<b>Term 3</b>
<b>1</b>	<i>Introduction to HSC</i>		Managing Life and Work Commitments	Preparing Job Applications
<b>2</b>	Workplace Communication	Personal Finance	Managing Life and Work Commitments	<b>Task 4 Interview 25% Trial HSC</b>
<b>3</b>	Workplace Communication	Personal Finance	Managing Life and Work Commitments	Trial HSC
<b>4</b>	Workplace Communication	<b>Personal Finance</b>	Managing Life and Work Commitments	Preparing Job Applications
<b>5</b>	Workplace Communication	<b>Personal Finance</b>	Managing Life and Work Commitments	Preparing Job Applications
<b>6</b>	Workplace Communication	Personal Finance	Team Enterprise	Preparing Job Applications
<b>7</b>	Workplace Communication	Personal Finance	Team Enterprise	Preparing Job Applications
<b>8</b>	<b>Task 1 Activities 25%</b>	<b>Year 12 FOCUS WEEK</b>	<b>Task 3 Activities 25%</b>	Preparing Job Applications
<b>9</b>	Workplace Communication	<b>Task 2 Test 25%</b>	Team Enterprise	Preparing Job Applications
<b>10</b>	Workplace Communication	Personal Finance	Team Enterprise	Preparing Job Applications
<b>11</b>	Workplace Communication	Personal Finance		

